

PCB terminal block - GKDS-EX - 1709203


Please be informed that the data shown in this PDF Document is generated from our Online Catalog. Please find the complete data in the user's documentation. Our General Terms of Use for Downloads are valid (<http://phoenixcontact.com/download>)



PCB terminal block, Nominal current: 20 A, Nom. voltage: 630 V, Pitch: 7.5 mm, Number of positions: 1, Connection method: Screw connection, Mounting: Soldering, Conductor/PCB connection direction: 0 °, Color: black, The article can be aligned to create different nos. of positions! Every group of terminal blocks is to be provided with a GRZ 2,5V-EX (1706112) flange plate on both sides. If there are more than 10 terminal blocks, at least one additional flange plate must be mounted for each further group of ten. When the pitch spacer GRZ 2,5-EX (1724628) is used, the max. working voltage is increased to 420 V.



Key commercial data

Packing unit	50 pc
GTIN	 4 017918 023638
Weight per Piece (excluding packing)	3.9 g
Custom tariff number	85369010
Country of origin	Germany

Technical data

Dimensions

Length	19 mm
Height	19.5 mm
Width	7.5 mm
Pitch	7.5 mm
Pin dimensions	1,1 X 0,8 mm
Hole diameter	1.4 mm

General

Range of articles	GKDS-EX
Insulating material group	I
Rated surge voltage (III/3)	6 kV
Rated surge voltage (III/2)	6 kV
Rated surge voltage (II/2)	6 kV
Rated voltage (III/3)	275 V
Rated voltage (III/2)	630 V
Rated voltage (II/2)	1000 V
Connection in acc. with standard	EN-VDE

PCB terminal block - GKDS-EX - 1709203

Technical data

General

Nominal current I _N	20 A
Nominal cross section	2.5 mm ²
Maximum load current	26 A
Insulating material	PA
Solder pin surface	Sn
Inflammability class according to UL 94	V2
Internal cylindrical gage	A3
Stripping length	9 mm
Number of positions	1
Screw thread	M3
Tightening torque, min	0.5 Nm
Tightening torque max	0.6 Nm

Connection data

Conductor cross section solid min.	0.2 mm ²
Conductor cross section solid max.	4 mm ²
Conductor cross section stranded min.	0.2 mm ²
Conductor cross section stranded max.	2.5 mm ²
Conductor cross section stranded, with ferrule without plastic sleeve min.	0.25 mm ²
Conductor cross section stranded, with ferrule without plastic sleeve max.	2.5 mm ²
Conductor cross section stranded, with ferrule with plastic sleeve min.	0.25 mm ²
Conductor cross section stranded, with ferrule with plastic sleeve max.	2.5 mm ²
Conductor cross section AWG/kcmil min.	24
Conductor cross section AWG/kcmil max	12
2 conductors with same cross section, solid min.	0.2 mm ²
2 conductors with same cross section, solid max.	1.5 mm ²
2 conductors with same cross section, stranded min.	0.2 mm ²
2 conductors with same cross section, stranded max.	1 mm ²
2 conductors with same cross section, stranded, ferrules without plastic sleeve, min.	0.25 mm ²
2 conductors with same cross section, stranded, ferrules without plastic sleeve, max.	0.5 mm ²
2 conductors with same cross section, stranded, TWIN ferrules with plastic sleeve, min.	0.5 mm ²
2 conductors with same cross section, stranded, TWIN ferrules with plastic sleeve, max.	1 mm ²

Classifications

eCl@ss

eCl@ss 4.0	27141109
------------	----------

PCB terminal block - GKDS-EX - 1709203

Classifications

eCl@ss

eCl@ss 4.1	27141109
eCl@ss 5.0	27141190
eCl@ss 5.1	27141190
eCl@ss 6.0	27261101
eCl@ss 7.0	27440401
eCl@ss 8.0	27440401

ETIM

ETIM 3.0	EC001121
ETIM 4.0	EC002643
ETIM 5.0	EC002643

UNSPSC

UNSPSC 6.01	30211801
UNSPSC 7.0901	39121432
UNSPSC 11	39121432
UNSPSC 12.01	39121432
UNSPSC 13.2	39121432

Approvals

Approvals

Approvals

EAC

Ex Approvals

ATEX / UL Recognized / cUL Recognized / EAC Ex / cULus Recognized

Approvals submitted

Approval details

EAC

Accessories

Accessories

Insertion bridge

PCB terminal block - GKDS-EX - 1709203

Accessories

Insertion bridge - EB 2- BK 4 - 0801157



Insertion bridge, 2-pos., for strip terminal block, BK 4

Screwdriver tools

Screwdriver - SZS 0,6X3,5 - 1205053



Actuation tool, for ST terminal blocks, insulated, also suitable for use as a bladed screwdriver, size: 0.6 x 3.5 x 100 mm, 2-component grip, with non-slip grip

Test plug terminal block

Reducing plug - RPS - 0201647



Reducing plug, Color: gray

Test plugs - MPS-MT - 0201744



Test plugs, Color: silver

Spacer plate - GRZ 2,5-EX - 1724628



Pitch spacer, raises the pitch by 2.5 mm, interlocks with terminal block of the same shape, color: black

PCB terminal block - GKDS-EX - 1709203

Accessories

PCB terminal block - GRZ 2,5 V-EX - 1706112



Flange plate, must be mounted at both sides for each terminal group or group of ten, color: black

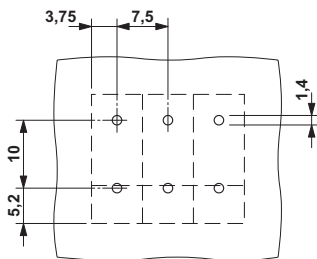
PCB terminal block - TP-KDS/GKDS-EX - 1701379



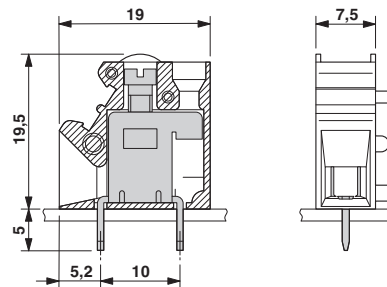
PCB terminal block, Number of positions: 1

Drawings

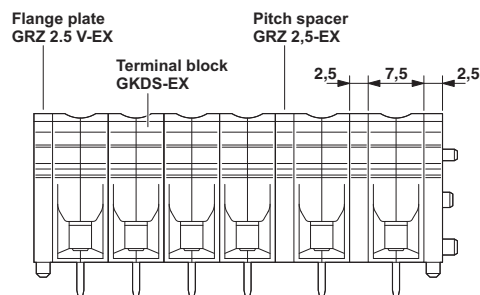
Drilling diagram



Dimensioned drawing



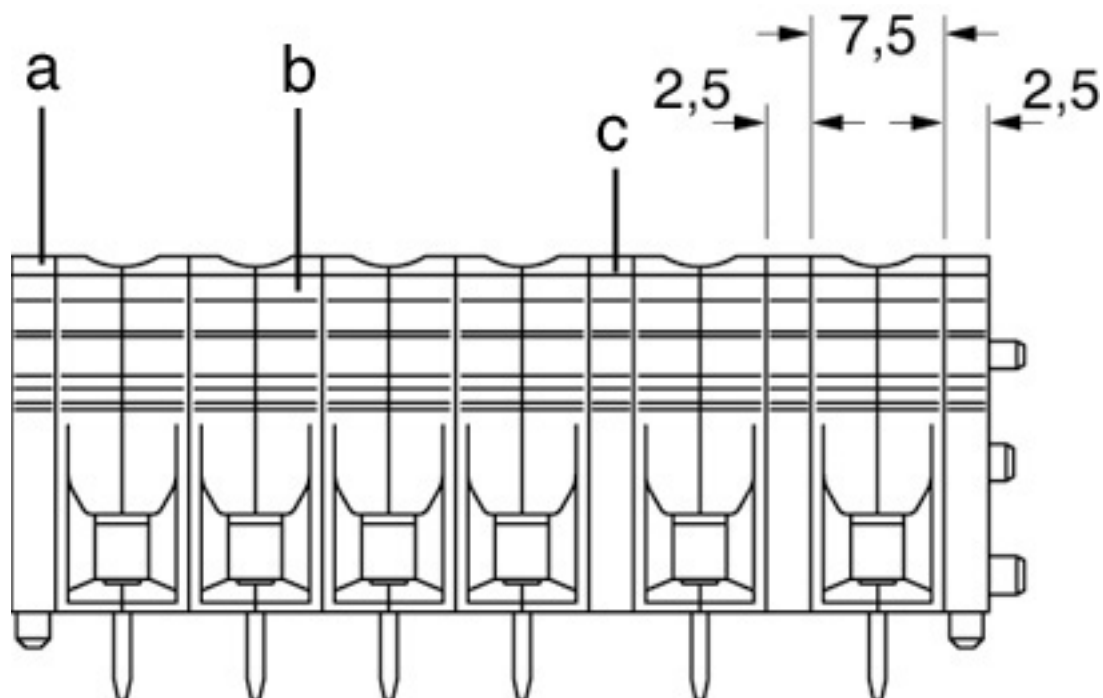
Dimensioned drawing



Installation instructions

PCB terminal block - GKDS-EX - 1709203

Schematic diagram



a = Flange plate, GRZ 2,5 V-EX

b = Terminal block GKDS-EX

c = Pitch spacer GRZ 2,5-EX