

Brass Compression Fitting Olive



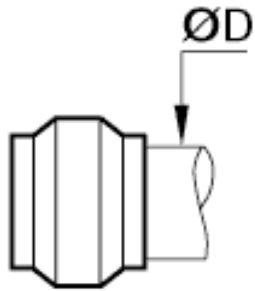
Description

For use with the body and nut in order to form a complete Legris compression fitting.

Recommended for connection to thermoplastic, brass or hardened copper. Ensures optimum sealing of installation.

Technical Specifications

Working temperature	-40 to 250 °C -40 to 282 °F 233 to 523 °K
Body	BRASS



Dimensions

ØD (MM)	Weight (kg)
6	0.01