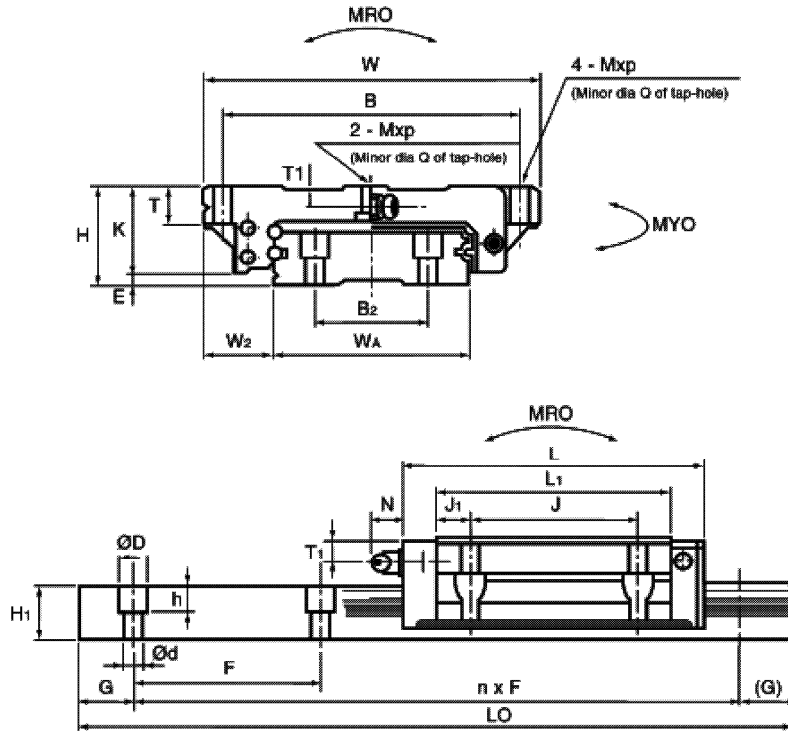


Interchangeable LW Linear Guides



Assembly dimension					Ball slide dimension							
H.	W.	Width	Length	Tapped hole	Thread	T ₁	Q	L ₁	J ₁	K	T	
H	E	W ₂	W									B x J
17	2.5	13.5	60	51.4	53 x 26	M4 x 0.7	3.2	3.3	35	4.5	14.5	6

Ball slide dimension			Basic load rating				Weight (kgf)	
Grease fitting			Dynamic Co (kgf)	Static Co (kgf)	Static moment (kgf·m)			
Thread	T ₁	N			Co (kgf)	M	12 1	M
M	8 1		∅3 thru hole	4	3	430	930	11.6
3.7	3.4	0.2						

Model No. L1W17

Std. length	Rail dimension							
	W.	H.	Bolt pitch	Bolt hole	G	Rail lgth	Weight	
	W ₁	H ₁	F	B ₁	d x D x h	(Std)	L ₀ max	(gf/100mm)
300/600/1000	33	8.7	40	18	4.5x7.5x5.3	15	1000	275