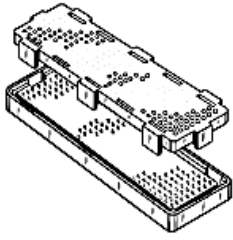


84501-101LF - MEG-ARRAY®
: 300 Position BGA
Receptacle, 4mm Component
Height, 1.27mm x 1.27mm
Array, Lead-free



www.fci.com



Mating Half

- ▶ 84500-002LF
- ▶ 84500-102LF
- ▶ 84578-102LF

Specifications

General	
Gender	Receptacle
Number of contacts (Total)	300
Quantity (per reel)	250
Dimensional	
Height (Mated)	10mm 4mm
Spacing (Board - approx. after soldering)	4 mm (0.157 in.) or 10 mm (0.394 in.)
Electrical	
Current rating	0.45 amps
Resistance (Contact)	20 to 25 m ohms max. (Initial), 10 m ohms max. increase (After testing)
Resistance (Insulation)	1000 M ohms
Voltage rating	200V AC
Mechanical	
Durability (Mating cycles)	50
Withdrawal Force	20 grams Per contact average
Mating force	30 grams Per contact average
Physical	
Material (Contact)	Copper Alloy
Material (Tail)	Lead-free solder balls: 95.5Sn / 4Ag / 0.5Cu
Material (Housing)	LCP
Plating (Contact area)	0.76 µm (30 µin.) Gold over 0.76 µm (30 µin.) Nickel
Temperature (Operating - range)	-40°C to +85°C
Approvals / Certifications	
UL File Number	E66906
CSA File Number	E66906
Approvals / Certifications	UL and CSA Approved
Other Features	

Most Popular Configuration	-
Packaging (Type)	Tape and Reel
Literature	950554-001
Pick-up Cap	Yes



Copyright FCI



FCIconnect.com

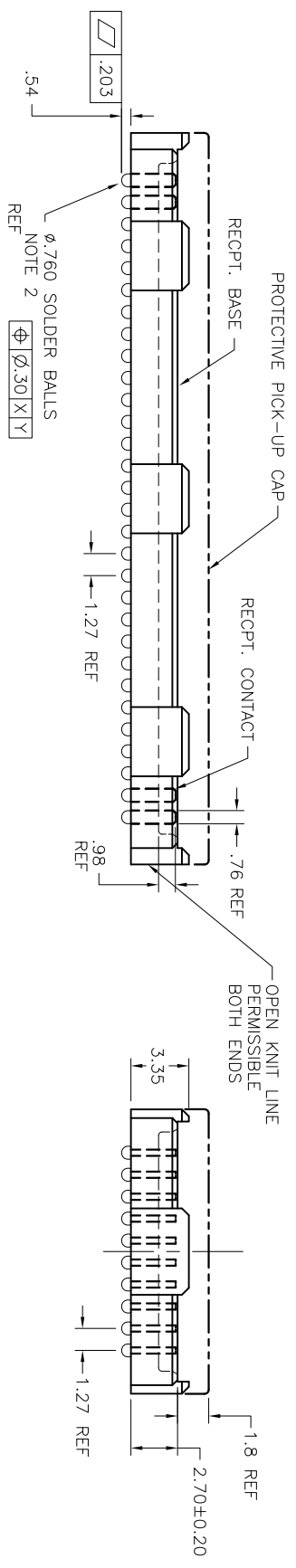
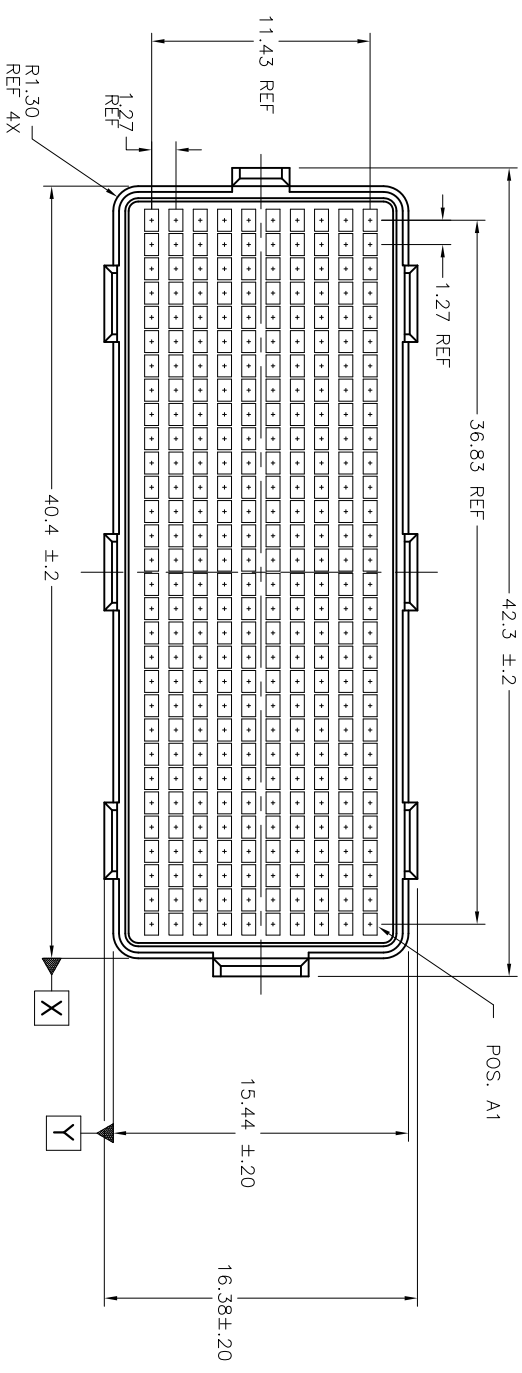


PRODUCT NUMBER
SEE TABLE

1 | 2

3 |

4



mat'l. code	SEE NOTE 1	date	surface	tolerance	projection	product family	title
lfr	ecm no.	dfr	ASME Y14.5	ASME Y14.5	MM	MEG-ARRAY	4mm RECEPTACLE ASSEMBLY
K	V06-0560	LP	2006-07-8	XXX.13			10 X 30 = 300 POS.
L	V11-0028	HTB	2011-06-02	XXX.051			
M	V-012333	RE	2002-07-30		Scale: 3:1		
N	V-13453-	DCH	2002-11-14				
H	V04-0940	VS	2004-06-18				
J	V05-1071	DAI	2005-02-21				
Sheet	revision						
index	Sheet	1	2	3	4		



dwg no
84501

sheet 1 of 4 size
A4

CUSTOMER Drawing

form: ArrmX11c

1 |

2 |

3 |

4



Copyright FCJ

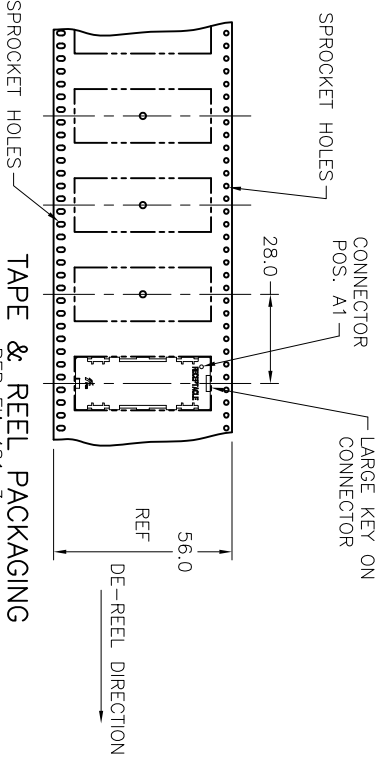
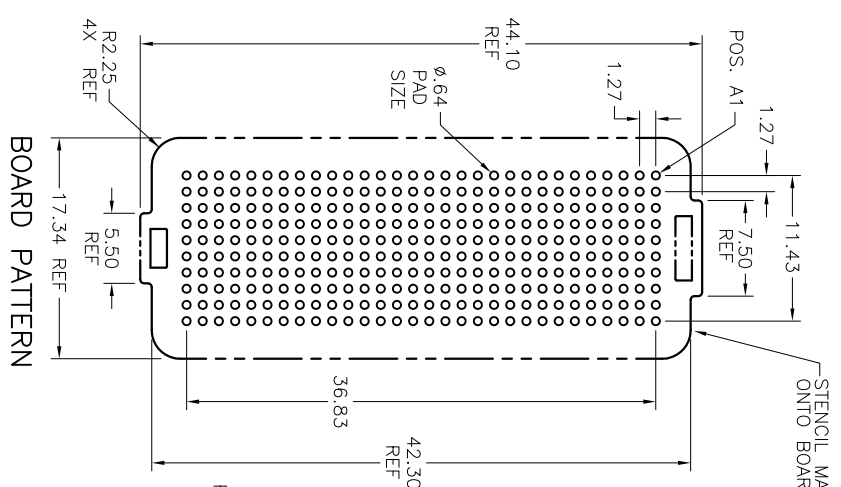
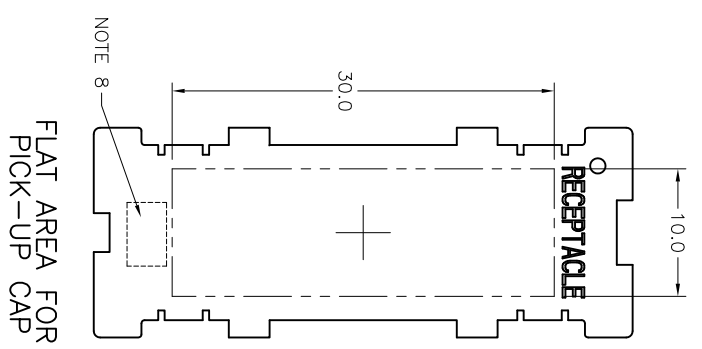


FCJconnect.com



4

PRODUCT NUMBER
SEE TABLE



mat'l. code	SEE NOTE 1	surface	tolerance	projection	product family
litr	ecm no	dr	date	ASME Y14.5	MEG-ARRAY
				ASME Y14.5	
				tolerances unless otherwise specified	
		angles	XX.3	MM	title
		dr	XXX.051	Scale: 2:1	4mm RECEPTACLE ASSEMBLY
		dr	D. WAUGHEN 1998-2-6		10 X 30 = 300 POS.
		dr	D. HARPER 1998-2-6		sheet 2 of 4 size
		dr	D. HARPER 1998-2-6		84501
		dr	D. HARPER 1998-2-6		A4
sheet	revision				CUSTOMER Drawing
index	sheet				

form: AdminXLC 1 2 3 4



Copyright FD



FCIconnect.com



4

PRODUCT NUMBER	PICK-UP CAP (NATURAL OR BLACK IN COLOR)	CONTACT PLATING AND THICKNESS	SOLDER BALL	NOTES
84501-001	YES	15µ" (.38µm) Au	SnPb	
84501-001LF	YES	15µ" (.38µm) Au	LEAD FREE	6
84501-091	YES	15µ" (.38µm) GXT	SnPb	
84501-091LF	YES	15µ" (.38µm) GXT	LEAD FREE	6
84501-101	YES	30µ" (.76µm) Au	SnPb	
84501-101LF	YES	30µ" (.76µm) Au	LEAD FREE	6
84501-191	YES	30µ" (.76µm) GXT	SnPb	
84501-191LF	YES	30µ" (.76µm) GXT	LEAD FREE	6
84501-201	YES	50µ" (1.27µm) Au SPECIAL	SnPb	4
84501-201LF	YES	50µ" (1.27µm) Au SPECIAL	LEAD FREE	4 AND 6
84501-291	YES	50µ" (1.27µm) GXT SPECIAL	SnPb	4
84501-291LF	YES	50µ" (1.27µm) GXT SPECIAL	LEAD FREE	4 AND 6
84501-A01	YES	30µ" (.76µm) Au SPECIAL	SnPb	7
84501-A01LF	YES	30µ" (.76µm) Au SPECIAL	LEAD FREE	6 & 7
84501-301	YES	15µ" (.38µm) Au SPECIAL	SnPb	7
84501-301LF	YES	15µ" (.38µm) Au SPECIAL	LEAD FREE	6 & 7
84501-401	YES	30µ" (.76µm) Au SPECIAL	SnPb	7
84501-401LF	YES	30µ" (.76µm) Au SPECIAL	LEAD FREE	6 & 7
84501-501	YES	Au SPECIAL	SnPb	4 & 7
84501-501LF	YES	Au SPECIAL	LEAD FREE	4, 6 & 7

1 | 2

3 |

4

A

A

B

B

form: Arrm1xlc

1 |

2 |

3 |

4

mat'l code	SEE NOTE 1	surface	tolerance	projection	product family
litr	ecn no	dr	date	ASME Y14.5	MEG-ARRAY
N		angles	ASME Y14.5	ASME Y14.5	title
		0° ±2'	tolerances unless otherwise specified	MM	4mm RECEPTACLE ASSEMBLY
		dr	XXXX051	Scale: 2:1	10 X 30 = 300 POS.
		plngj	D. WAUGHEN 1998-2-6		dwg no
		dlr	D. HARPER 1998-2-6		84501
		apdd	D. HARPER 1998-2-6		sheet 3 of 4
sheet	revision				size
index	sheet				A4
					CUSTOMER Drawing

NOTES:

- ① MATERIAL
HOUSING: LCP
CONTACT: COPPER ALLOY
PLATING
CONTACT: (SEE TABLE ON SHEET3)
SOLDER BALL: (SEE TABLE ON SHEET3)
EUTECTIC SnPb OR LEAD FREE
95.5Sn/44Ag/0.5Cu
- ② SOLDER BALLS WILL NOT BE PERFECT SPHERICAL SHAPE DUE TO REFLOW ATTACHMENT.
- ③ MATED HEIGHT EFFECTED BY CUSTOMER'S PCB PAD SIZE, PLATING, SOLDER REFLOW PROFILE, & SOLDER PASTE.
- ④ PLATING FOR -2XX SERIES PRODUCT NUMBERS MEET THE REQUIREMENTS OF GR-1217-CORE, CENTRAL OFFICE ENVIRONMENT, (25 YEAR LIFE EXPECTANCY). THE CONTACTS IN THESE PRODUCT NUMBERS ALSO HAVE SPECIAL CONTACT GEOMETRY.
- ⑤ FOR PROPER APPLICATION FOLLOW FCI APPLICATION SPECIFICATION GS-20-033 LEAD FREE SOLDER BALLS WILL NOT SOLDER PROPERLY IN A LEADED SOLDER PROCESS DUE TO A HIGHER REFLOW TEMPERATURE. LEAD FREE PRODUCT IS THEREFORE NOT BACKWARDS COMPATIBLE WITH LEADED OR SOME SOLDERING APPLICATIONS. REFERENCE FCI APPLICATION SPECIFICATION.
- ⑥ THIS PRODUCT MEETS EUROPEAN UNION DIRECTIVES AND OTHER COUNTRY REGULATIONS AS DESCRIBED IN GS-47-0004 PRODUCT MEETING THIS DIRECTIVE IS IDENTIFIED IN THE LOT CODE NUMBER MARKED ON EACH PART BY HAVING AN "X" IN THE SEVENTH CHARACTER POSITION.
- ⑦ 84501-A01 AND -A01LF ARE CUSTOMER SPECIALS.

⑧ CURRENT COMPANY LOGO TO BE VISIBLE IN APPROXIMATE AREA SHOWN.

9. 84501-301, -301LF, -401, -401LF, -501 and -501LF ARE OBSOLETE.

10. A  SYMBOL WILL BE NEXT TO ANY DIMENSION, NEW VIEW OR NOTE WHICH HAS BEEN MODIFIED WITH THE CURRENT DRAWING REVISION

mat'l code	SEE NOTE 1	surface	tolerance	projection	product family
lfr	ecm no	dr	date	ASME Y14.5	ASME Y14.5
N		angles	XXX.X	MM	MEG-ARRAY
		0° ±2'	XXX.X	Scale: 2:1	4mm RECEPTACLE ASSEMBLY
		dr	D. WAUGHEN		10 X 30 = 300 POS.
		plqj	D. HARPER		sheet 4 of 4
		cltr	D. HARPER		size
		qdd	D. HARPER		A4
sheet	revision				
index	sheet				