

STRIKING & STRUCK TOOLS



Striking Tools

- Hammers
- Automotive Body Tools

Struck Tools

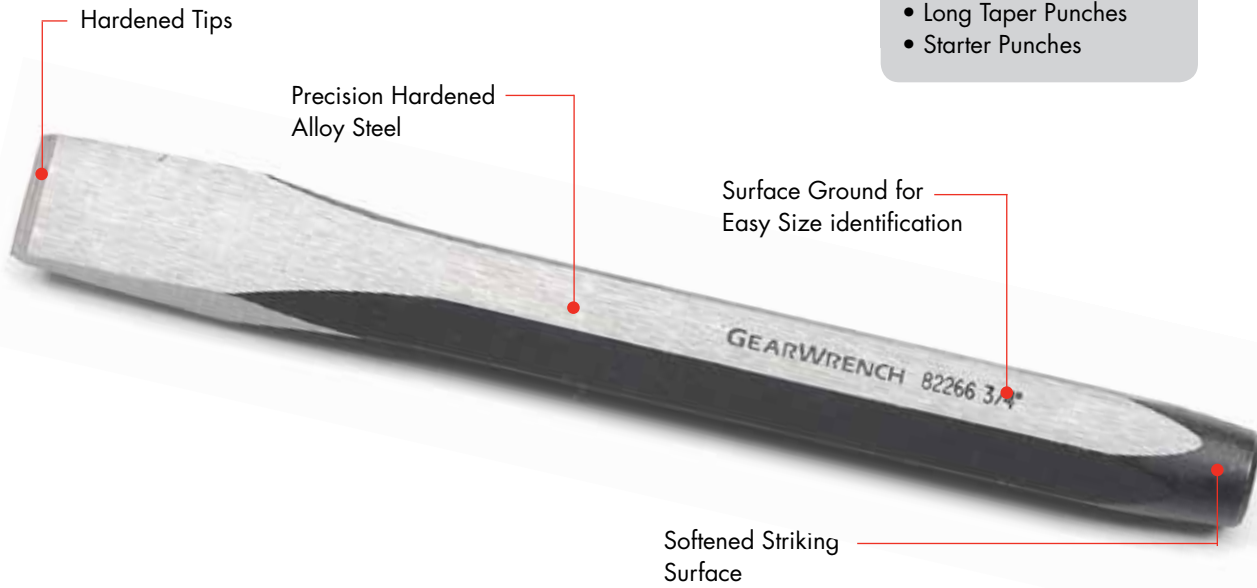
- Punches
- Chisels
- Punch & Chisel Holder



CHISELS AND PUNCHES

AVAILABLE IN:

- Cold Chisels
- Center Punches
- Pin Punches
- Long Taper Punches
- Starter Punches



STRIKING & STRUCK TOOLS

HAMMERS

AVAILABLE IN:

- Ball Pein
- Curved Claw
- Drilling
- Dead Blow
- Rubber Mallet
- Soft or Hard Face



82303 - 5 Pc. Hammer Set

Item No.	Description
82251	16 oz. Ball Pein Hammer - Fiberglass
82255	3 lb Drilling Hammer
82260	12 oz. Soft Face Hammer - Removable Caps
82256	16 oz. Dead Blow Hammer - Composite Handle
82259	16 oz. Rubber Mallet - Wood Hickory Handle



82288 - 5 Pc. Ball Pein Hammer Set

Item No.	Description
82251	16 oz. Ball Pein Hammer - Fiberglass
82250	8 oz. Ball Pein Hammer - Fiberglass
82253	32 oz. Ball Pein Hammer - Fiberglass
82252	24 oz. Ball Pein Hammer - Fiberglass
82260	12 oz. Soft Face Hammer - Removable Caps



Open Stock - Ball Pein Hammers

Item No.	Description
82250	8 oz. Ball Pein Hammer - Fiberglass
82251	16 oz. Ball Pein Hammer - Fiberglass
82252	24 oz. Ball Pein Hammer - Fiberglass
82253	32 oz. Ball Pein Hammer - Fiberglass

- Use with struck tools, machine work, auto body, riveting, shaping metal



82254 - 16 oz. Claw Hammer Curved Claw - Fiberglass

- Driving nails, construction, multi-use, but not for punches and chisels



OPEN STOCK
STRIKING & STRUCK TOOLS



82255 - 3 lb Drilling Hammer

- For heavy duty use with punches, chisels, and star drills



82289 - 3 lb Engineers Hammer



82291 - 40 oz. Blacksmiths Hammer



82259 - 16 oz. Rubber Mallet - Wood Hickory Handle



82260 - 12 oz. Soft Face Hammer

- For light assembly applications where condition of work piece is important

Open Stock - Dead Blow Hammers

Item No.	Description
82258	48 oz. Dead Blow Hammer - Composite Handle
82256	16 oz. Dead Blow Hammer - Composite Handle
82257	32 oz. Dead Blow Hammer - Composite Handle

- **Multi-use applications in assembly, maintenance, production**



82306 - 27 Pc. Punch and Chisel Set

Item No.	Description
82261	1/4" x 4-3/4" x 1/4" Cold Chisel
82262	3/8" x 5" x 5/16" Cold Chisel
82263	7/16" x 5-1/2" x 3/8" Cold Chisel
82264	1/2" x 6" x 3/8" Cold Chisel
82265	5/8" x 6-1/2" x 3/8" Cold Chisel
82266	3/4" x 7" x 5/8" Cold Chisel
82267	7/8" x 7-1/2" x 3/4" Cold Chisel
82268	1" x 8" x 7/8" Cold Chisel
82269	1/4" x 4-1/4" Center Punch
82270	3/8" x 5" Center Punch
82271	7/16" x 5-1/2" Center Punch
82272	3/32" x 4-3/4" x 5/16" Pin Punch
82273	1/8" x 5" x 5/16" Pin Punch
82274	5/32" x 5-1/4" x 5/16" Pin Punch
82275	3/16" x 5-1/2" x 5/16" Pin Punch
82276	1/4" x 7" x 3/8" Pin Punch
82277	5/16" x 7" x 1/2" Pin Punch
82278	1/8" x 8" x 3/8" Long Taper Punch
82279	5/32" x 8-1/2" x 1/2" Long Taper
82280	3/16" x 9" x 1/2" Long Taper Punch
82281	1/4" x 11" x 5/8" Long Taper Punch
82282	5/32" x 5" x 3/8" Starter Punch
82283	3/16" x 5" x 3/8" Starter Punch
82284	1/4" x 6" x 1/2" Starter Punch
82285	1/8" x 4-1/2" x 5/16" Starter
82286	5/16" x 7" x 5/8" Starter Punch
82287	3/8" x 8" x 3/4" Starter Punch



OPEN STOCK

STRIKING & STRUCK TOOLS



82305 - 12 Pc. Punch and Chisel Set

Item No.	Description
82261	1/4" x 4-3/4" x 1/4" Cold Chisel
82262	3/8" x 5" x 5/16" Cold Chisel
82264	1/2" x 6" x 3/8" Cold Chisel
82265	5/8" x 6-1/2" x 3/8" Cold Chisel
82270	3/8" x 5" Center Punch
82272	3/32" x 4-3/4" x 5/16" Pin Punch
82273	1/8" x 5" x 5/16" Pin Punch
82274	5/32" x 5-1/4" x 5/16" Pin Punch
82275	3/16" x 5-1/2" x 5/16" Pin Punch
82278	1/8" x 8" x 3/8" Long Taper Punch
82283	3/16" x 5" x 3/8" Starter Punch
82285	1/8" x 4-1/2" x 5/16" Starter



82304 - 5 Pc. Punch and Chisel Set

Item No.	Description
82270	3/8" x 5" Center Punch
82273	1/8" x 5" x 5/16" Pin Punch
82274	5/32" x 5-1/4" x 5/16" Pin Punch
82275	3/16" x 5-1/2" x 5/16" Pin Punch
82264	1/2" x 6" x 3/8" Cold Chisel



82308 - 4 Pc. Cold Chisel Set

Item No.	Description
82263	7/16" x 5-1/2" x 3/8" Cold Chisel
82264	1/2" x 6" x 3/8" Cold Chisel
82265	5/8" x 6-1/2" x 3/8" Cold Chisel
82266	3/4" x 7" x 5/8" Cold Chisel

82309 - 5 Pc. Pin Punch Set

Item No.	Description
82273	1/8" x 5" x 5/16" Pin Punch
82274	5/32" x 5-1/4" x 5/16" Pin Punch
82275	3/16" x 5-1/2" x 5/16" Pin Punch
82276	1/4" x 7" x 3/8" Pin Punch
82277	5/16" x 7" x 1/2" Pin Punch



82307 - 4 Pc. Long Taper Punch Set

Item No.	Description
82278	1/8" x 8" x 3/8" Long Taper Punch
82279	5/32" x 8-1/2" x 1/2" Long Taper
82280	3/16" x 9" x 1/2" Long Taper Punch
82281	1/4" x 11" x 5/8" Long Taper Punch



84090 - Punch & Chisel Holder



Open Stock - Cold Chisels

Item No.	Description
82261	1/4" x 4-3/4" x 1/4" Cold Chisel
82262	3/8" x 5" x 5/16" Cold Chisel
82263	7/16" x 5-1/2" x 3/8" Cold Chisel
82264	1/2" x 6" x 3/8" Cold Chisel
82265	5/8" x 6-1/2" x 3/8" Cold Chisel
82266	3/4" x 7" x 5/8" Cold Chisel
82267	7/8" x 7-1/2" x 3/4" Cold Chisel
82268	1" x 8" x 7/8" Cold Chisel



- Designed to cut metal such as wrought iron, steel, brass, aluminum, as well as rivets, bolts and nuts



Open Stock - Center Punches

Item No.	Description
82269	1/4" x 4-1/4" Center Punch
82270	3/8" x 5" Center Punch
82271	7/16" x 5-1/2" Center Punch

- Used for marking center lines and pilot drill locations



Open Stock - Pin Punches

Item No.	Description
82272	3/32" x 4-3/4" x 5/16" Pin Punch
82273	1/8" x 5" x 5/16" Pin Punch
82274	5/32" x 5-1/4" x 5/16" Pin Punch
82275	3/16" x 5-1/2" x 5/16" Pin Punch
82276	1/4" x 7" x 3/8" Pin Punch
82277	5/16" x 7" x 1/2" Pin Punch

- Used for final removal to drive out pins and rivets



Open Stock - Long Taper Punches

Item No.	Description
82278	1/8" x 8" x 3/8" Long Taper Punch
82279	5/32" x 8-1/2" x 1/2" Long Taper
82280	3/16" x 9" x 1/2" Long Taper Punch
82281	1/4" x 11" x 5/8" Long Taper Punch

- Used to install and remove pins and shafts and to align holes



Open Stock - Starter Punches

Item No.	Description
82282	5/32" x 5" x 3/8" Starter Punch
82283	3/16" x 5" x 3/8" Starter Punch
82284	1/4" x 6" x 1/2" Starter Punch
82285	1/8" x 4-1/2" x 5/16" Starter Punch
82286	5/16" x 7" x 5/8" Starter Punch
82287	3/8" x 8" x 3/4" Starter Punch

- Designed for both starting and installing pins and rivets

82200 - 18" Rolling Wedge bar



82302 - 7 Pc. Body Tool Set

Item No.	Description
3719	Smooth Faced Bumping Hammer with Square & Round Face
3718	Smooth Faced Cross Chisel Hammer
3720	Cross Faced Shrinking Hammer
3725	Wedge Dolly
3724	General Purpose Dolly
3722	Toe Dolly
3723	Heel Dolly



3718 - Smooth Faced Cross Chisel Hammer



3719 - Smooth Faced Bumping Hammer with Square & Round Face



OPEN STOCK
STRIKING & STRUCK TOOLS

OPEN STOCK

STRIKING & STRUCK TOOLS



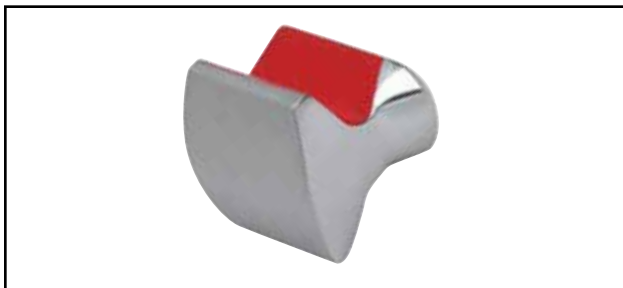
3720 - Cross Faced Shrinking Hammer



3722 - Toe Dolly



3723 - Heel Dolly



3724 - General Purpose Dolly



3725 - Wedge Dolly