

Datasheet

RS Pro Aluminium Concealed Fixings Anodised Handle, 128mm x 34mm x 8mm 120mm

RS Stock No: **237-851**



Product Details

RS Pro drawer handle measures 128 x 34 x 8 mm. This handle is made of aluminium with anodised finishing for added durability. The fixing centres are 120 mm apart.

Features and Benefits

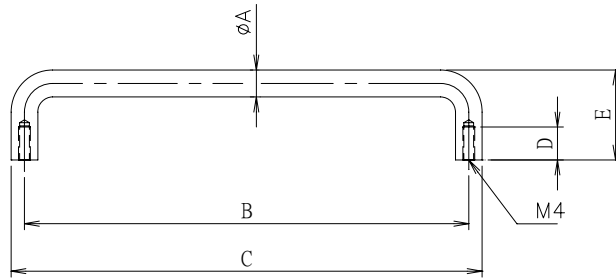
- Clear anodised rounded ends
- Reverse panel fixing
- Suitable for concealed fixings



ENGLISH

Specifications:

Concealed Fixings	Yes
Finish	Anodised
Material	Aluminium
Fixing Centres	120 mm
Height	34 mm
Length	128 mm
Width	8 mm



STOCK NO.	Dia mm (A)	C.C mm (B)	Length mm (C)	D mm	Height mm (E)	Weightt (g)	Material
237-889	8	52	60	8	34	14	Aluminum
237-873	8	80	88	8	34	24	Aluminum
237-867	8	100	108	8	34	27	Aluminum
237-851	8	120	128	8	34	30	Aluminum
237-845	9	150	159	9	30	100	SS304
237-902	9	120	129	9	30	83	SS304
237-895	9	95	104	9	30	72	SS304