

Event data logger DCMEVE

- 1 input channel for pulses
- Memory up to 500.000 measurements
- Programmable scale factor, offset and engineering unit
- Easy programming via software
- Easy export into Microsoft EXCEL™
- Battery life time up to 10 years



DCMEVE101

The DCMEVE101 is a battery powered event recorder. Typical applications are monitoring gas, water or electroical meters; rainfall monitoring; contact closure monitoring; time studies or traffic studies. The storage medium is non-volatile solid state memory, providing maximum data security. The data logger can be easily programmed by PC with a user friendly software. The device can be started and stopped by PC or push button. Using the Wachendorff Software, starting, stopping and downloading from the DCMEVE101 is simple and easy. Graphical, tabular and summary data is provided for analysis and data can be viewed in multiple units, using the Engineering Units function.

Messkanal: 1 Messkanal für Impulssignale.

Input range: 0 to 30 V; input low <0.4; input high >2.8 V; input impedance >60 kOhm; minimum input active (low) time: 10 µsec.

Memory: 406,323 readings; software configurable memory wrap.

Reading Rate: 4 Hz to 1 every 24 hours.

Start Modes: Immediate start; delay start up to 18 months; multiple pushbutton start/stop.

Multiple Start/Stop mode: Start and stop the device multiple times without having to download data or communicate with a PC.

Stop modes: Manual through software; timed (specific date and time).

Engineering Units: Native measurement units (up to 10 characters) can be scaled to display measurement units of another type such as on/off, open/closed or rainfall.

Real Time Recording: The device may be used with PC to monitor and record data in real-time.

Computer interface: USB (Interface cable required); 2,400 baud; 115,200 Baud.

LED Functionality: Two LED's on the front for displaying recording status, low battery and/or full memory.

Battery: 3,6 V lithium battery included; user replaceable with a battery life time of 10 years typical, dependent upon frequency and duty cycle.

Time Accuracy: +/-1 minute/month (at 20 °C/68 °F, stand alone data logging).

Dimensions(L x W x H): 36 mm x 56 mm x 16 mm

Input connection: Removable screw terminal.

Operating environment: -40 °C to +80 °C, 0 %RH to 95 %RH non-condensing.

Materials: ABS plastic

Weight: 0.9 oz (24 g).

Software: Windows XP SP3 / Vista / Windows 7 compatible.

Software features:

1. Graph: Visualisation and analysis of the recorded data of multiple devices and measurements at the same time. Easy toggling between single and multiple visualisation possible.

2. Real time measurement: Visualisation of real time measurement including logging at the same time.

3. Graphical cursor: One click at the graph results in displaying time, measurement value, parameters and device number.

4. Data table: Instant access to the data table of the measurement values.

5. Scaling: An automatic scaling function is available for displaying all measured values on one screen. It is also possible to perform a manual scaling.

6. Format: Individual settings of the graph colour, graph characteristics and much more.

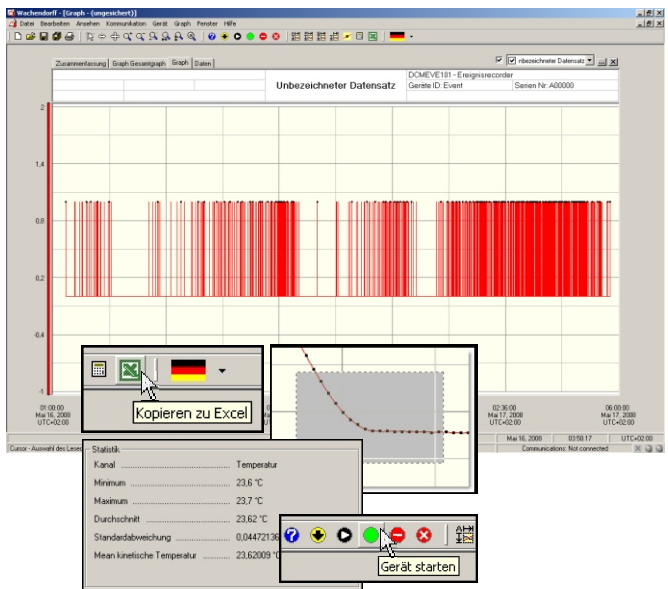
7. Statistic function: Average, Minimum and maximum values, deviation etc. Could be easily created and displayed by one click.

8. Export of data: Export of data in different formats (*.dat; *.csv; *.txt). The export in EXCEL™ with one mouse cclick.

9. Interface: Automatic detection of the serial communication port.

10. Configuration: Die Messrate, Start- und Stopzeiten können einfach eingestellt werden.

11. Print: Printing out of the data and/or graph with one click.



Order information

Type	Order no.
Event data logger	DCMEVE101
Zubehör: Software with USB-Interface to PC Replacement battery	DCMIFC200 DCMLTC7PN