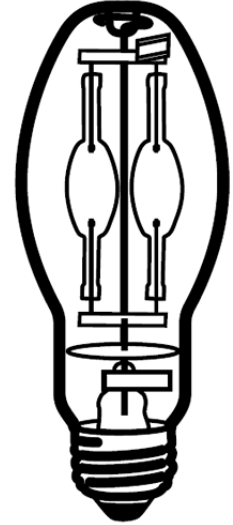


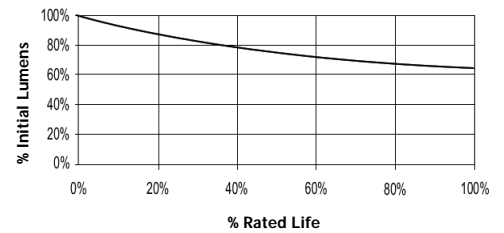
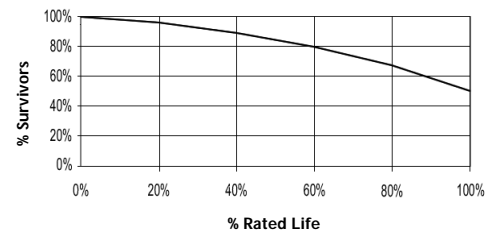
HIE 70W/C/U/PS+S/737
Product Number: 29457
Lamp Type: Pulse Start Sustainability

Performance Data

Light Output (Lumens @ 100 hours)	5300
Lamp Lumens Per Watt	76
Rated Life (Hrs. @ 10 Hr. /Start)	40000
Correlated Colour Temperature (K)	3700
Chromaticity (CIE - X Y)	395, 390
Colour Rendering Index (CRI) or (Ra)	70
Typical Warm Up Time (Minutes)	1-2
Typical Hot Restart Time (Minutes)	1-2
Burning Position	Universal


Physical Data / Requirements

Base Designation	E27
Bulb Designation	E54
Bulb Diameter (mm)	54
Max. Overall Length (mm)	141
Light Centre Length (mm)	89
Effective Arc Length (mm)	N/A
Max. Base Temperature (°C)	210
Max. Bulb Temperature (°C)	400
Luminaire Type	Enclosed
Socket Pulse Rating (KV)	4.5
Mercury Content (mg)	14.0

Lumen Maintenance

Lamp Mortality

Lamp Electrical Data / Requirements

IEC Standard	-
Lamp Wattage (W)	70
Lamp Operating Voltage (V)	85
Lamp Operating Current (Amps)	0.90
Min. Open Circuit Voltage (RMS)	198
Min. Starting Pulse (Peak V)	1800-4500
Min. Pulse Width at 2700V (microseconds)	1
Min. Pulse Rate Per 1/2 cycle	1
Pulse Position (Electrical Degrees)	60-90, 240-270

Revision: 2013-01-10

Notes:

- 1) This Product Specification contains data about typical performance at nominal power. Actual values may depend on ballast and applications. Complies with (CE), Low Voltage (CE), WEEE and RoHS Directives.
- 2) Lamp data is based on vertical operation. For horizontal operation lumen output will be reduced by 10% and lamp life reduced by 25%.