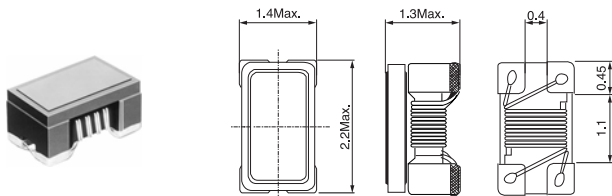
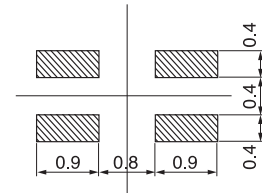


NT2012 Type



(Unit: mm)

Recommended patterns
 推奨パターン



(Unit: mm)

Features

- Wire-wound miniature common mode choke.
- 2 Line use (for Data Line).
- 985AH-1001 and 985BH-1007 passed USB-IF Compliance Program (HS/FS signal quality test)
- Surface mount / Reflow soldering.
- RoHS compliant

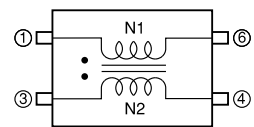
特長

- 小型巻線タイプのコモンモードチョーク
- 2ライン対応 (データライン用)
- USB-IF Compliance Programに適合
- 面実装、リフロー対応
- RoHS 指令対応

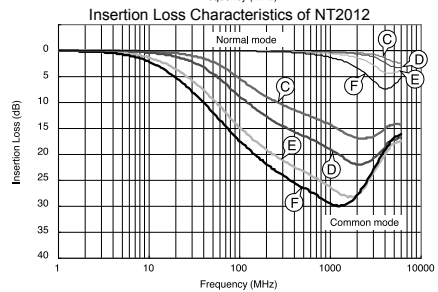
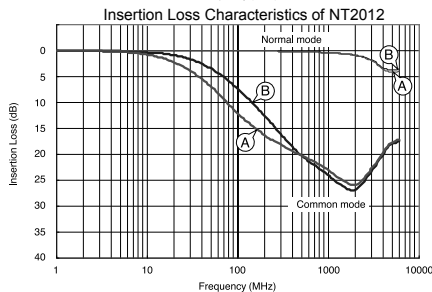
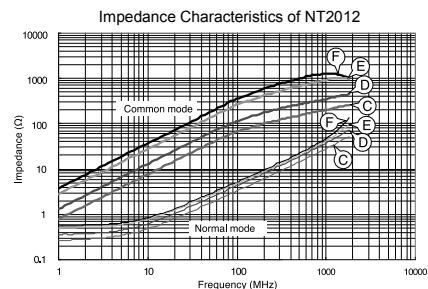
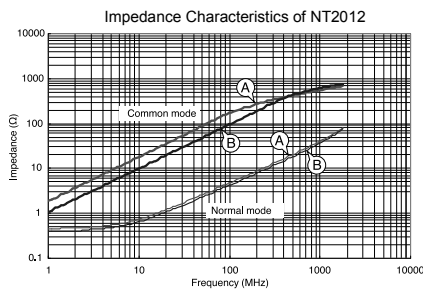
Electrical Characteristics 電気的特性

記号 Symbol	東光品番 TOKO Part Number	コモンモードインピーダンス Common Mode Impedance			コモンモード挿入損失 Common Mode Insertion Loss			直流抵抗/ライン DC Resistance /Line	直流電流 DC Current
		10MHz (Ω) Typ.	100MHz (Ω) Typ.	10MHz (dB) Max.	100MHz (dB) Min.	500MHz (dB) Min.	/Line (Ω) Max.	DC Current (mA) Max.	
A	985AH-1001	18	165	1.2	4.0	11.0	0.26	330	
B	985BH-1007	10	90	1.0	1.5	8.0	0.26	330	
C	985DH-1022	7	67	1.0	5.0(Max.)	5.0	0.16	420	
D	985DH-1023	14	120	1.0	2.0	7.0	0.21	370	
E	985DH-1025	28	260	1.5	6.0	14.0	0.31	310	
F	985DH-1026	38	370	2.0	6.5	15.0	0.36	280	

Pin Connections 接続図



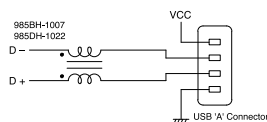
Typical Characteristics 代表特性例



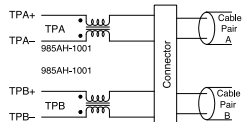
Applications 用途

Ideal for use as common-mode chokes for USB1.1 / USB2.0 / IEEE1394 interface.

USB1.1/USB2.0 Application



IEEE1394 Application



Test circuit 測定回路

