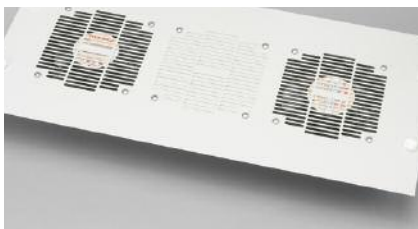


# Top panels and base options



top view of fan tray



underside view of fan tray showing controller



brush strip cable entry



base showing castor and jacking foot

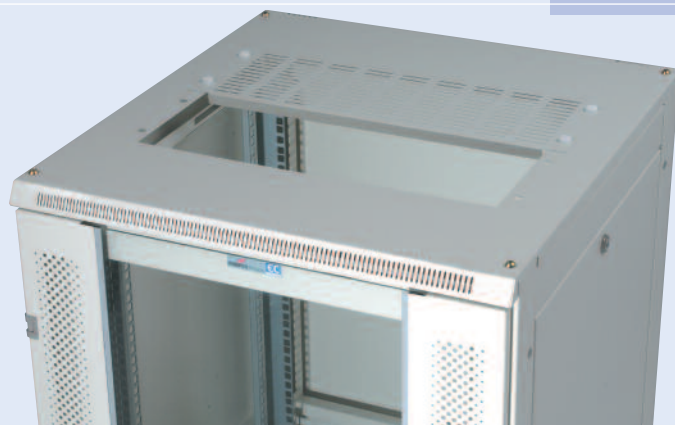


base showing plinth kit mounted

## Top Panel Options

The roof panel has a single large cutout which accepts either two standard top panels or a single 4-way fan tray. Top panel options are detailed below and can be specified and positioned in the roof panel using the product part code as detailed on page 4.

Description	Part Number	
	Grey	Black
Plain Panel	FTPPG	FTPPB
Vented Panel	FTVPG	FTVVB
Brush Strip Panel	FTPBG	FTPBB
Fan Tray / 2 Fans 230V AC	FTP4G	FTP4B
Fan Tray / TCM1000 + 2 DC Fans	FTP5G	FTP5B
Fan Tray / 3 Fans 230V AC	FTP6G	FTP6B
Fan Tray / 4 Fans 230V AC	FTP7G	FTP7B
Fan Tray / 2 Fans 110V	FTP8G	FTP8B
Fan Tray / 3 Fans 110V	FTP9G	FTP9B



## Base Options

EC cabinets come with a multifunctional corner plate as standard. The plate can be used to bolt the cabinet to a floor, or alternatively it can be fitted with either \*jacking feet and/or castors. An optional plinth kit is also available which covers the raised base area for a neat finish. The plinth plates can be individually removed to allow cable access if required.

\*Jacking feet are fitted as standard to all cabinets.

Description	Part Number	
	Grey	Black
Set of 4 Castors	ECC	
Plinth Kit, 600W x 600D	EMP66	EMP66B
Plinth Kit, 600W x 800D	EMP68	EMP68B
Plinth Kit, 800W x 600D	EMP86	EMP86B
Plinth Kit, 800W x 800D	EMP88	EMP88B