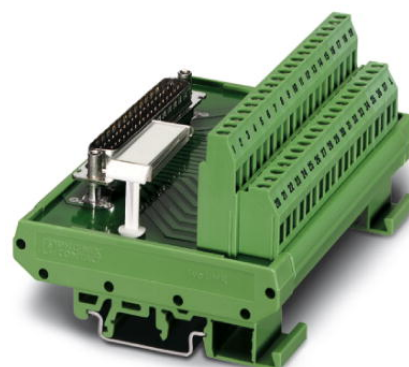


FLKM-D 9 SUB/S


Order No.: 2281128

The illustration shows version FLKM-D37 SUB/S



VARIOFACE module, with screw connection and D-Subminiature pin strip, for mounting on NS 35/7.5 or NS 32, 9-pos.

Commercial data

| | |
|--|---|
| EAN |  4 017918 054571 |
| Pack | 10 pcs. |
| Customs tariff | 85369010 |
| Gross weight in pieces | 0.072 KG |
| Net weight per piece (exclusive packing) | 0.06946 KG |
| Catalog page information | Page 248 (IF-2007) |

Product notes

WEEE/RoHS-compliant since:
03/31/2006



<http://www.download.phoenixcontact.com>
Please note that the data given here has been taken from the online catalog. For comprehensive information and data, please refer to the user documentation. The General Terms and Conditions of Use apply to Internet downloads.

Technical data

General data

| | |
|---|--|
| Nominal voltage U_N | 125 V AC/DC |
| Max. current carrying capacity per branch | 2.5 A |
| | 1.5 A (with even load on all branches) |
| Number of positions | 9 |

| | |
|---|-----------------------|
| Width | 33.8 mm |
| Height | 77 mm |
| Depth | 58.5 mm |
| Ambient temperature (operation) | -20 °C ... 50 °C |
| Ambient temperature (storage/transport) | -20 °C ... 70 °C |
| Test voltage | 800 V (50 Hz, 1 min.) |
| Mounting position | Any |
| Standards/regulations | IEC 60664 |
| | DIN EN 50178 |
| | IEC 62103 |
| Pollution degree | 2 |
| Surge voltage category | II |
| Rated surge voltage | 1.2 kV |
| Rated insulation voltage | 125 V |

Connection data for connection 1

| | |
|--|---------------------|
| Connection name | PCB connection |
| Connection in acc. with standard | IEC / EN |
| Connection method | Screw connection |
| Conductor cross section solid min. | 0.2 mm ² |
| Conductor cross section solid max. | 4 mm ² |
| Conductor cross section stranded min. | 0.2 mm ² |
| Conductor cross section stranded max. | 2.5 mm ² |
| Conductor cross section AWG/kcmil min. | 24 |
| Conductor cross section AWG/kcmil max | 12 |
| Stripping length | 8 mm |
| Screw thread | M3 |

Certificates / Approvals



Certification

cULus Recognized, GOST

Certifications applied for:

Certification Ex:

Accessories

| Item | Designation | Description |
|------------------------|------------------------------------|--|
| Cable/conductor | | |
| 2302421 | CABLE D-SUB-B-B-S/.../.../... | Shielded round cable, assembled with two D-SUB female connectors, variable cable length |
| 2302340 | CABLE D-SUB-S/.../.../... | Shielded round cable, assembled with one D-SUB male and one female connector, variable cable length |
| 2299987 | CABLE-D 9SUB/B/S/ 50/ KONFEK/S | Round shielded cable set, with 9-pos. D-SUB female and male connectors, cable length: 0.5 m |
| 2299990 | CABLE-D 9SUB/B/S/100/ KONFEK/S | Round shielded cable set, with 9-pos. D-SUB female and male connectors, cable length: 1 m |
| 2300009 | CABLE-D 9SUB/B/S/150/ KONFEK/S | Round shielded cable set, with 9-pos. D-SUB female and male connectors, cable length: 1.5 m |
| 2302010 | CABLE-D 9SUB/B/S/200/ KONFEK/S | Round shielded cable set, with 9-pos. D-SUB female and male connectors, cable length: 2 m |
| 2302023 | CABLE-D 9SUB/B/S/300/ KONFEK/S | Round shielded cable set, with 9-pos. D-SUB female and male connectors, cable length: 3 m |
| 2302036 | CABLE-D 9SUB/B/S/400/ KONFEK/S | Round shielded cable set, with 9-pos. D-SUB female and male connectors, cable length: 4 m |
| 2302049 | CABLE-D 9SUB/B/S/600/ KONFEK/S | Round shielded cable set, with 9-pos. D-SUB female and male connectors, cable length: 6 m |
| 2926014 | CABLE-D- 9SUB/F/OE/0,25/ S/0,5M | Shielded cable with a 9-pos. D-SUB female connector and one open end. The individual wires are labeled 1 to 9 and fitted with ferrules. The braided shield is routed to a separate cable end. Cable length: 0.5 m. |
| 2926027 | CABLE-D- 9SUB/F/OE/0,25/ S/1,0M | Shielded cable with a 9-pos. D-SUB female connector and one open end. The individual wires are labeled 1 to 9 and fitted with ferrules. The braided shield is routed to a separate cable end. Cable length: 1 m. |
| 2926030 | CABLE-D- 9SUB/F/OE/0,25/ S/1,5M | Shielded cable with a 9-pos. D-SUB female connector and one open end. The individual wires are labeled 1 to 9 and fitted with ferrules. The braided shield is routed to a separate cable end. Cable length: 1.5 m. |
| 2926043 | CABLE-D- 9SUB/F/OE/0,25/ S/2,0M | Shielded cable with a 9-pos. D-SUB female connector and one open end. The individual wires are labeled 1 to 9 and fitted with ferrules. The braided shield is routed to a separate cable end. Cable length: 2 m. |
| 2926056 | CABLE-D- 9SUB/F/OE/0,25/ S/3,0M | Shielded cable with a 9-pos. D-SUB female connector and one open end. The individual wires are labeled 1 to 9 and fitted with ferrules. The braided shield is routed to a separate cable end. Cable length: 3 m. |

| | | |
|---------|--------------------------------|--|
| 2926069 | CABLE-D- 9SUB/F/OE/0,25/S/4,0M | Shielded cable with a 9-pos. D-SUB female connector and one open end. The individual wires are labeled 1 to 9 and fitted with ferrules. The braided shield is routed to a separate cable end. Cable length: 4 m. |
| 2926072 | CABLE-D- 9SUB/F/OE/0,25/S/6,0M | Shielded cable with a 9-pos. D-SUB female connector and one open end. The individual wires are labeled 1 to 9 and fitted with ferrules. The braided shield is routed to a separate cable end. Cable length: 6 m. |

General

| | | |
|---------|-------------------------------|---|
| 2900903 | CABLE-D- 9SUB-F-OE-0,25-S/... | Shielded cable with a 9-pos. D-SUB female connector and one open end. The individual wires are labeled 1 to 9 and fitted with ferrules. The braided shield is routed to a separate cable end. Cable length: variable. |
|---------|-------------------------------|---|

Address

PHOENIX CONTACT Ltd
Halesfield 13
Telford Shropshire TF7 4PG,GB
Phone 01952 681 700
Fax 01952 681 799
<http://www.phoenixcontact.co.uk>



© 2013 Phoenix Contact
Technical modifications reserved;