

igus<sup>®</sup>



iglide<sup>®</sup> J



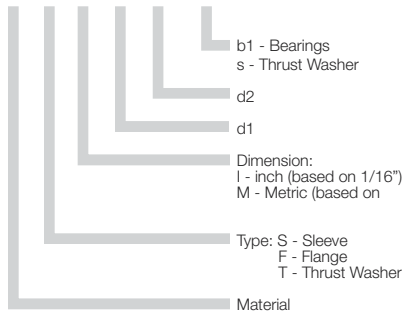
### Product Range

- Standard Styles: Sleeve, Flange and Thrust Washer
- Custom shapes and sizes available
- Inner diameters: Inch sizes from 1/8 - 1-5/8 in. Metric sizes from 2.5 - 75 mm

### Part Number Structure

#### Part Number Structure

**J S I - 02 03 - 03**



### Permissible Surface Speeds

	Continuous fpm	Short Term fpm
Rotating	295	590
Oscillating	216	413
Linear	1574	1968

### Usage Guidelines



- When very low coefficients of friction are necessary
- When a cost effective bearing for low pressure loads is needed
- For high speeds
- For high wear resistance



- When high pressure loads occur  
➤ iglide® G300, iglide® L280
- When temperatures occur that are greater than 248°F for a short-term  
➤ iglide® G300



Visit [www.igus.com](http://www.igus.com)  
to use our online  
expert system

### Material Table

General Properties	Unit	iglide® J	Testing Method
Density	g/cm <sup>3</sup>	1.49	
Color		yellow	
Max. moisture absorption at 73°F/50% r.h.	% weight	0.3	DIN 53495
Max. moisture absorption	% weight	1.3	
Coefficient of friction, dynamic against steel	μ	0.06 - 0.18	
p x v value, max. (dry)	psi x fpm	9700	

### Mechanical Properties

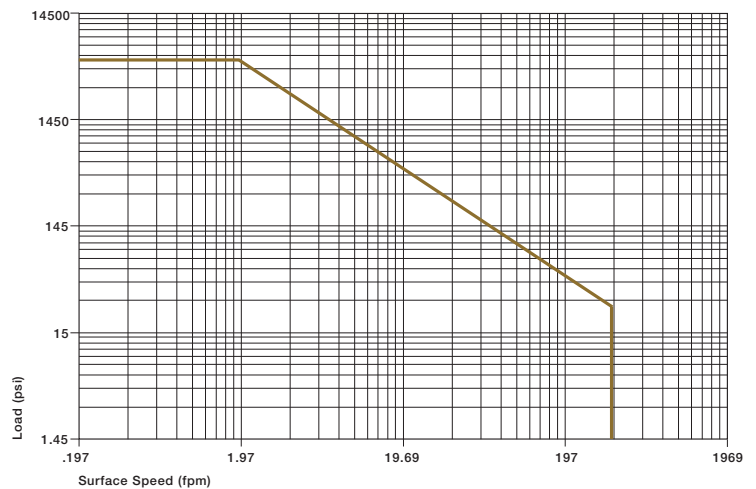
Modulus of elasticity	psi	348,000	DIN 53457
Tensile strength at 68°F	psi	10,585	DIN 53452
Compressive strength	psi	8,700	
Permissible static surface pressure (68°F)	psi	5,075	
Shore D-hardness		74	DIN 53505

### Physical and Thermal Properties

Max. long-term application temperature	°F	194	
Max. application temperature, short-term	°F	248	
Min. application temperature	°F	-58	
Thermal conductivity	W/m x K	0.25	ASTM C 177
Coefficient of thermal expansion (at 73°F)	K <sup>-1</sup> x 10 <sup>-5</sup>	10	DIN 53752

### Electrical Properties

Specific volume resistance	Ωcm	> 10 <sup>13</sup>	DIN IEC 93
Surface resistance	Ω	> 10 <sup>12</sup>	DIN 53482



Graph 4.1: Permissible p x v value for iglide® J running dry against steel shaft, at 68°F

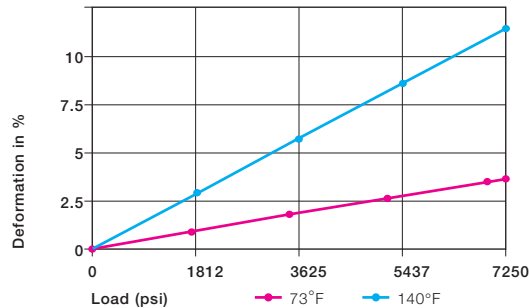


The iglide® J plain bearings are designed for the lowest coefficients of friction while running dry and their low stick-slip tendency.

## Compressive Strength

With a maximum permissible surface pressure of 5075 psi, iglide® J plain bearings are not suited for extreme loads. Shown in Graph 4.2 is the elastic deformation of iglide® J for radial loads. At the maximum permissible load of 5075 psi, the deformation is less than 2.5%.

► Compressive Strength, Page 1.3



Graph 4.2: Deformation under load and temperature

## Permissible Surface Speeds

The low coefficient of friction and the extremely low stick-slip tendency of iglide® J plain bearings are especially important at very low speeds. However, iglide® J material can also be used for high speeds of over 197 fpm. In both cases, the static friction is very low and stick-slip does not occur.

The maximum values given in Table 4.2 can only be achieved at the lowest pressure loads. At the given speeds, friction can cause a temperature increase to maximum permissible levels. In practice, though, this temperature level is rarely reached, due to varying application conditions.

► Surface Speed, Page 1.5  
►  $p \times v$  value, Page 1.6

	Continuous fpm	Short Term fpm
Rotating	295	590
Oscillating	216	413
Linear	1574	1968

Table 4.2: Maximum surface speeds

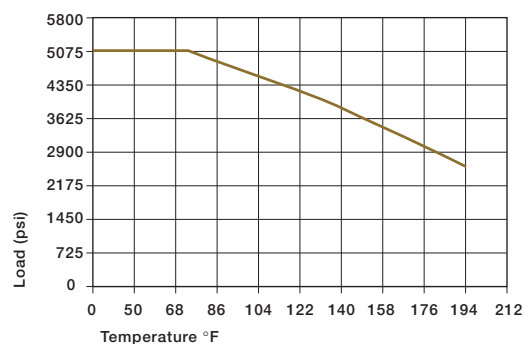
## Temperatures

iglide® J plain bearings can be used between -58°F and 194°F; the short-term maximum permissible temperature is 248°F. Graph 4.3 shows that the compressive strength of iglide® J plain bearings decreases with increasing temperatures. Also, the wear increases significantly above 176°F

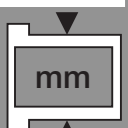
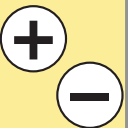
► Application Temperatures, Page 1.7

iglide® J	Application Temperature
Minimum	-58 °F
Max., long-term	+194 °F
Max., short-term	+248 °F

Table 4.3: Temperature limits for iglide® J



Graph 4.3: Recommended maximum permissible static surface pressure of iglide® J as a result of the temperature





# iglide® Plain Bearings J - Technical Data

iglide® J

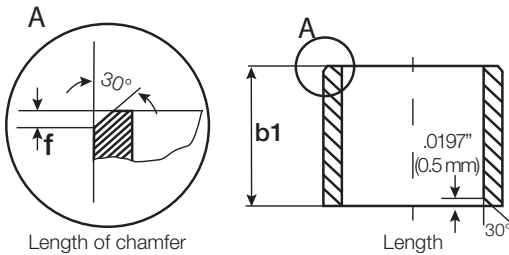
Telephone 1-800-521-2747  
1-401-438-7270  
Fax

Internet: <http://www.igus.com>  
email: [sales@igus.com](mailto:sales@igus.com)  
QuickSpec: <http://www.igus.com/iglide-quickspec>

## Installation Tolerances

iglide® J plain bearings are oversized before being pressfit. After proper installation into a recommended housing bore, the inner diameter adjusts to meet our specified tolerances. Please adhere to the catalog specifications for housing bore and recommended shaft sizes. This will help to ensure optimal performance of iglide® plain bearings.

- See Tolerance Table, Page 1.14
- Testing Methods, Page 1.15



For Inch Size Bearings		
Length Tolerance (b1)		Length of Chamfer (f)
Length (inches)	Tolerance (h13) (inches)	Based on d1
0.1181 to 0.2362	-0.0000 /-0.0071	f = .012 → d <sub>1</sub> .040" - .236"
0.2362 to 0.3937	-0.0000 /-0.0087	f = .019 → d <sub>1</sub> > .236" - .472"
0.3937 to 0.7086	-0.0000 /-0.0106	f = .031 → d <sub>1</sub> > .472" - 1.18"
0.7086 to 1.1811	-0.0000 /-0.0130	f = .047 → d <sub>1</sub> > 1.18"
1.1811 to 1.9685	-0.0000 /-0.0154	
1.9685 to 3.1496	-0.0000 /-0.0181	

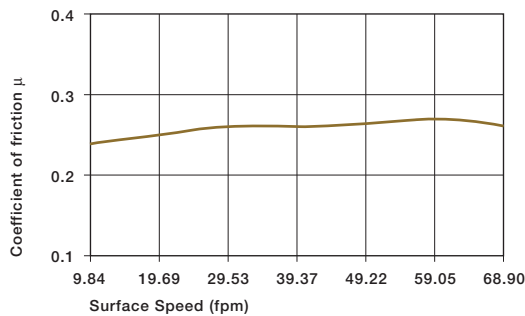
For Metric Size Bearings		
Length Tolerance (b1)		Length of Chamfer (f)
Length (mm)	Tolerance (h13) (µm)	Based on d1
1 to 3	-0 /-140	f = 0.3 → d <sub>1</sub> 1 - 6 mm
> 3 to 6	-0 /-180	f = 0.5 → d <sub>1</sub> > 6 - 12 mm
> 6 to 10	-0 /-220	f = 0.8 → d <sub>1</sub> > 12 - 30 mm
> 10 to 18	-0 /-270	f = 1.2 → d <sub>1</sub> > 30 mm
> 18 to 30	-0 /-330	
> 30 to 50	-0 /-390	
> 50 to 80	-0 /-460	

## Friction and Wear

Graph 4.5 shows the coefficients of friction for different loads. The coefficient of friction level is very good for all loads with iglide® J. Friction and wear are also dependent, to a large extent, on the shafting partner. With increasing shaft roughness, the coefficient of friction also increases.

For iglide® J a ground surface with an average roughness range of 4 - 12 rms is recommended for the shaft.

- Coefficients of Friction and Surfaces, Page 1.8
- Wear Resistance, Page 1.9

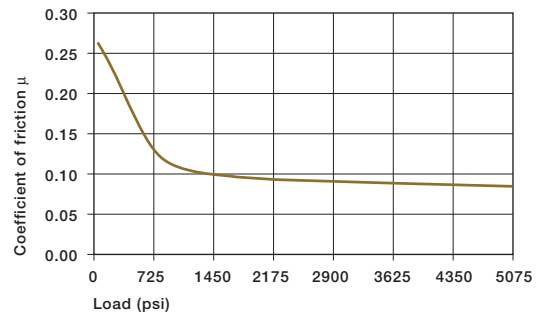


Graph 4.4: Coefficient of friction of iglide® J as a result of the surface speed; p = 108 psi

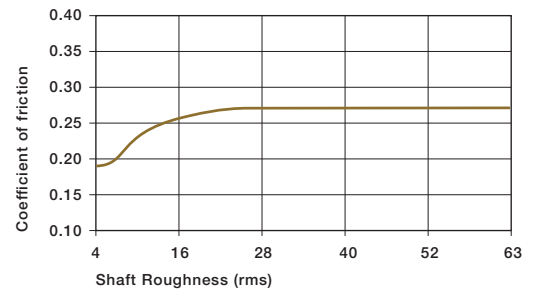
iglide® J                      Coefficient of Friction

Dry	0.06 - 0.18
Grease	0.09
Oil	0.04
Water	0.04

Table 4.4: Coefficients of friction for iglide® J against steel (Shaft finish = 40 rms, 50 HRC)



Graph 4.5: Coefficient of friction of iglide® J as a result of the load, v = 1.97 fpm



Graph 4.6: Coefficient of friction of iglide® J as a result of the shaft surface (shaft Cold Rolled Steel)

### Shaft Materials

Graph 4.7 and 4.9 show results of testing different shaft materials with plain bearings made of iglide® J.

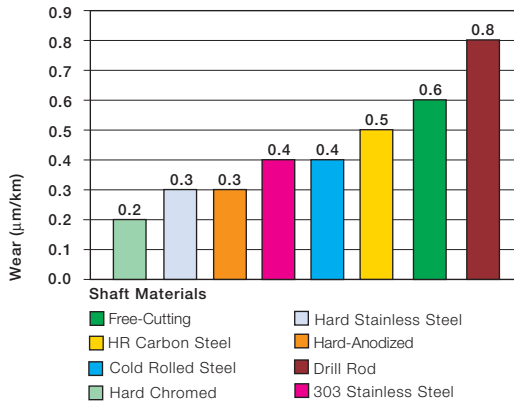
If iglide® J plain bearings are used in rotational applications with loads under 290 psi, several shaft materials are suitable. A Hard Chromed shaft provides the lowest wear in this range. When compared to most iglide® materials, iglide® J has very low wear results at low loads with all shaft materials tested.

Also, for increasing loads up to 725 psi, the wear resistance of iglide® J is excellent. Especially suitable is the combination of 303 stainless steel. In oscillating operation with Cold Rolled Steel and HR Carbon Steel, the wear of iglide® J is slightly higher than for rotation. For oscillating movements with loads of 290 psi, iglide® J performs best with Cold Rolled Steel shaft.

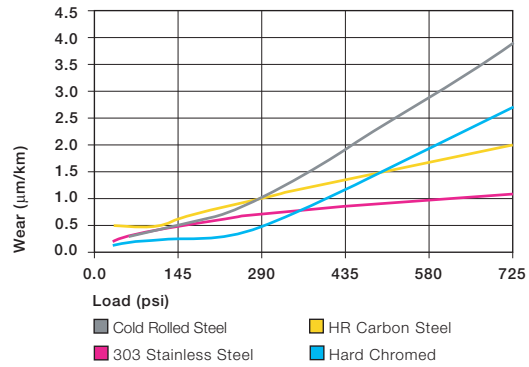
As Graph 4.9 shows, the difference in wear between rotation and oscillating movements is most significant for 303 stainless steel shafts.

If the shaft material you plan to use is not contained in this list, please contact us.

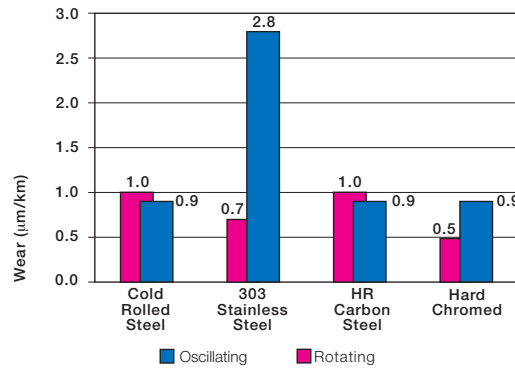
➤ Shaft Materials, Page 1.11



Graph 4.7: Wear of iglide® J, rotating application with different shaft materials, p = 108 psi, v = 98 fpm



Graph 4.8: Wear of iglide® J, rotating application with different shaft materials, depending on load



Graph 4.9: Wear for oscillating and rotating applications with different shaft materials under constant load p = 290 psi

### Chemical Resistance

iglide® J plain bearings are resistant to diluted lyes and very weak acids, as well as fuels and all types of lubricants. The low moisture absorption also permits use in wet or damp environments. Plain bearings made of iglide® J are resistant to common cleaning agents used in the food industry.

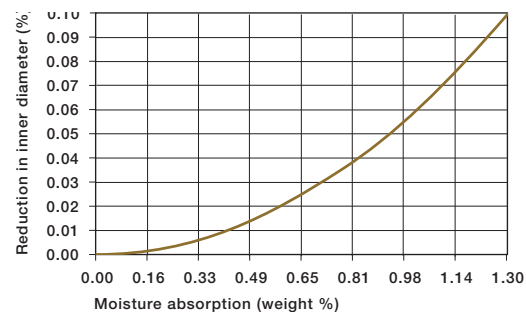
The moisture absorption of iglide® J plain bearings is 0.3% in standard atmosphere. The saturation limit in water is 1.3%. These values are so low that possible design changes due to absorption are only necessary in extreme cases.

➤ Chemical Resistance, Page 1.16

Medium	Resistance
Alcohol	+
Hydrocarbons, chlorinated	+
Greases, oils without additives	+
Fuels	+
Weak acids	0 to -
Strong acids	-
Weak alkaline	+
Strong alkaline	+ to 0

+ resistant, 0 conditionally resistant, - not resistant

Table 4.5: Chemical resistance of iglide® J  
All data given concerns the chemical resistance at room temperature (68°F). For a complete list, see page 1.16



Graph 4.10: Effect of moisture absorption on iglide® J plain bearings



iglide® J

Telephone 1-800-521-2747  
Fax 1-401-438-7270

Internet: <http://www.igus.com>  
email: [sales@igus.com](mailto:sales@igus.com)  
QuickSpec: <http://www.igus.com/iglide-quickspec>

## Radiation Resistance

Plain bearings made from iglide® J are resistant to radiation up to an intensity of  $3 \times 10^2$  Gy.

## UV-Resistance

iglide® J plain bearings become discolored under UV radiation. However, hardness, compressive strength and the wear resistance of the material do not change.

## Vacuum

When used in a vacuum environment, the iglide® J plain bearings release moisture as a vapor. Therefore, only dehumidified bearings made of iglide® J are suitable for the vacuum environment.

## Electrical Properties

iglide® J plain bearings are electrically insulating.

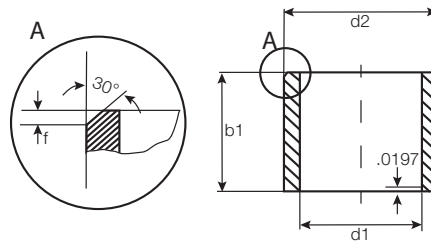
### iglide® J

Specific volume resistance	> $10^{13} \Omega\text{cm}$
----------------------------	-----------------------------

Surface resistance	> $10^{12} \Omega$
--------------------	--------------------

Table 4.6: Electrical properties of iglide® J

# iglide® Plain Bearings J - Sleeve Bearing, Inch



For tolerance values  
please refer to page 4.4

Part Number	d1	d2	b1	I.D. After Pressfit		Housing Bore		Shaft Size	
				Max.	Min.	Max.	Min.	Max.	Min.
JSI-0204-04	1/8	1/4	1/4	.1280	.1262	.2515	.2510	.1250	.1241
JSI-0204-06	1/8	1/4	3/8	.1280	.1262	.2515	.2510	.1250	.1241
JSI-0304-06	3/16	1/4	3/8	.1905	.1886	.2506	.2500	.1865	.1858
JSI-0304-08	3/16	1/4	1/2	.1905	.1886	.2506	.2500	.1865	.1858
JSI-0305-05	3/16	5/16	5/16	.1905	.1887	.3140	.3135	.1875	.1866
JSI-0305-06	3/16	5/16	3/8	.1905	.1887	.3140	.3135	.1875	.1866
JSI-0305-08	3/16	5/16	1/2	.1905	.1887	.3140	.3135	.1875	.1866
JSI-0405-04	1/4	5/16	1/4	.2539	.2516	.3140	.3135	.2500	.2491
JSI-0405-06	1/4	5/16	3/8	.2539	.2516	.3140	.3135	.2500	.2491
JSI-0405-08	1/4	5/16	1/2	.2539	.2516	.3140	.3135	.2500	.2491
JSI-0406-04	1/4	3/8	1/4	.2539	.2516	.3765	.3760	.2500	.2491
JSI-0406-08	1/4	3/8	1/2	.2539	.2516	.3765	.3760	.2500	.2491
JSI-0406-12	1/4	3/8	3/4	.2539	.2516	.3765	.3760	.2500	.2491
JSI-0406-16	1/4	3/8	1	.2539	.2516	.3765	.3760	.2500	.2491
JSI-0506-06	5/16	3/8	3/8	.3148	.3125	.3753	.3747	.3115	.3106
JSI-0506-08	5/16	3/8	1/2	.3148	.3125	.3753	.3747	.3115	.3106
JSI-0506-12	5/16	3/8	3/4	.3148	.3125	.3753	.3747	.3115	.3106
JSI-0507-06	5/16	7/16	3/8	.3164	.3141	.4390	.4385	.3125	.3116
JSI-0507-08	5/16	7/16	1/2	.3164	.3141	.4390	.4385	.3125	.3116
JSI-0507-10	5/16	7/16	5/8	.3164	.3141	.4390	.4385	.3125	.3116
JSI-0607-06	3/8	15/32	3/8	.3773	.3750	.4381	.4375	.3750	.3736
JSI-0607-08	3/8	7/16	1/2	.3783	.3760	.4381	.4375	.3750	.3736
JSI-0608-03	3/8	1/2	3/16	.3787	.3764	.5006	.5000	.3750	.3736
JSI-0608-06	3/8	1/2	3/8	.3787	.3764	.5006	.5000	.3750	.3736
JSI-0608-08	3/8	1/2	1/2	.3787	.3764	.5006	.5000	.3750	.3736
JSI-0608-10	3/8	1/2	5/8	.3787	.3764	.5006	.5000	.3750	.3736
JSI-0708-08	7/16	17/32	1/2	.4406	.4379	.5316	.5309	.4375	.4366
JSI-0709-06	7/16	19/32	3/8	.4406	.4379	.5632	.5625	.4375	.4366
JSI-0809-06	1/2	19/32	3/8	.5047	.5020	.5941	.5934	.5000	.4983
JSI-0809-08	1/2	19/32	1/2	.5047	.5020	.5941	.5934	.5000	.4983
JSI-0809-12	1/2	19/32	3/4	.5047	.5020	.5941	.5934	.5000	.4983
JSI-0809-16	1/2	19/32	1	.5047	.5020	.5941	.5934	.5000	.4983
JSI-0810-04	1/2	5/8	1/4	.5047	.5020	.6260	.6250	.5000	.4990
JSI-0810-08	1/2	5/8	1/2	.5047	.5020	.6260	.6250	.5000	.4990
JSI-0810-12	1/2	5/8	3/4	.5047	.5020	.6260	.6250	.5000	.4990
JSI-0910-26	9/16	21/32	1 5/8	.5655	.5627	.6566	.6559	.5615	.5605
JSI-1011-08	5/8	23/32	1/2	.6280	.6253	.7192	.7184	.6240	.6230
JSI-1011-12	5/8	23/32	3/4	.6280	.6253	.7192	.7184	.6240	.6230

iglide® J  
Sleeve - Inch

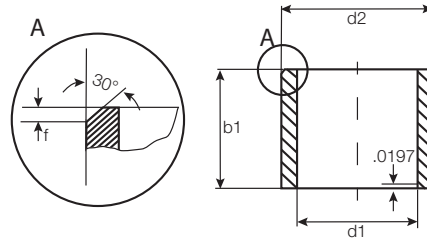
PDF: [www.igus.com/iglide-pdfs](http://www.igus.com/iglide-pdfs)  
CAD: [www.igus.com/iglide-CAD](http://www.igus.com/iglide-CAD)  
RoHS info: [www.igus.com/RoHS](http://www.igus.com/RoHS)





# iglide® Plain Bearings J - Sleeve Bearing, Inch

iglide® J  
Sleeve - Inch



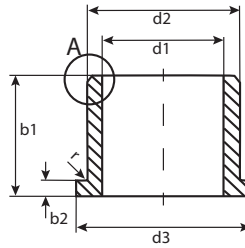
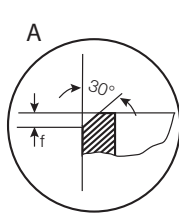
For tolerance values  
please refer to page 4.4

Telephone 1-800-521-2747  
Fax 1-401-438-7270

Internet: <http://www.igus.com>  
email: [sales@igus.com](mailto:sales@igus.com)  
QuickSpec: <http://www.igus.com/iglide-quickspec>

Part Number	d1	d2	b1	I.D. After Pressfit		Housing Bore		Shaft Size	
				Max.	Min.	Max.	Min.	Max.	Min.
JSI-1011-14	5/8	23/32	7/8	.6280	.6253	.7192	.7184	.6240	.6230
JSI-1011-20	5/8	23/32	1 1/4	.6280	.6253	.7192	.7184	.6240	.6230
JSI-1012-04	5/8	3/4	1/4	.6297	.6270	.7510	.7500	.6250	.6240
JSI-1012-06	5/8	3/4	3/8	.6297	.6270	.7510	.7500	.6250	.6240
JSI-1012-08	5/8	3/4	1/2	.6297	.6270	.7510	.7500	.6250	.6240
JSI-1012-12	5/8	3/4	3/4	.6297	.6270	.7510	.7500	.6250	.6240
JSI-1012-16	5/8	3/4	1	.6297	.6270	.7510	.7500	.6250	.6240
JSI-1214-08	3/4	7/8	1/2	.7541	.7505	.8755	.8747	.7491	.7479
JSI-1214-12	3/4	7/8	3/4	.7541	.7505	.8755	.8747	.7491	.7479
JSI-1214-16	3/4	7/8	1	.7541	.7505	.8755	.8747	.7491	.7479
JSI-1216-12	3/4	1	3/4	.7559	.7525	1.0010	1.000	.7500	.7490
JSI-1216-16	3/4	1	1	.7559	.7525	1.0010	1.000	.7500	.7490
JSI-1315-15	13/16	15/16	15/16	.8174	.8141	.9383	.9375	.8125	.8105
JSI-1315-18	13/16	15/16	1 1/8	.8174	.8141	.9383	.9375	.8125	.8105
JSI-1416-12	7/8	1	3/4	.8791	.8757	1.0005	.9997	.8741	.8729
JSI-1418-12	7/8	1 1/8	3/4	.8809	.8775	1.1258	1.1250	.8750	.8740
JSI-1418-24	7/8	1 1/8	1 1/2	.8809	.8775	1.1258	1.1250	.8750	.8740
JSI-1618-16	1	1 1/8	1	1.0041	1.0007	1.1255	1.1250	.9991	.9979
JSI-1618-24	1	1 1/8	1 1/2	1.0041	1.0007	1.1255	1.1250	.9991	.9979
JSI-1620-12	1	1 1/4	3/4	1.0059	1.0025	1.2510	1.2500	1.0000	.9990
JSI-1620-16	1	1 1/4	1	1.0059	1.0025	1.2510	1.2500	1.0000	.9990
JSI-1620-24	1	1 1/4	1 1/2	1.0059	1.0025	1.2510	1.2500	1.0000	.9990
JSI-1822-16	1 1/8	1 3/8	1	1.1327	1.1276	1.3760	1.3750	1.1250	1.1240
JSI-2022-14	1 1/4	1 13/32	7/8	1.2548	1.2508	1.4068	1.4058	1.2488	1.2472
JSI-2024-24	1 1/4	1 1/2	1 1/2	1.2600	1.2532	1.5005	1.4995	1.2500	1.2490
JSI-2426-32	1 1/2	1 5/8	2	1.5100	1.5032	1.6568	1.6558	1.4988	1.4972
JSI-2428-24	1 1/2	1 3/4	1 1/2	1.5100	1.5032	1.7505	1.7495	1.5000	1.4990
JSI-2832-20	1 3/4	2	1 1/4	1.7547	1.7507	2.0010	2.0000	1.7500	1.7476

# iglide® Plain Bearings J - Flange Bearing, Inch



For tolerance values  
please refer to page 4.4

$r = \text{max. } .0197$

Part Number	d1	d2	b1	d3	b2 -.0055	I.D. After Pressfit		Housing Bore		Shaft Size	
						Max.	Min.	Max.	Min.	Max.	Min.
JFI-0204-06	1/8	1/4	3/8	.360	.047	.1280	.1262	.2515	.2510	.1250	.1241
JFI-0304-02	3/16	1/4	1/8	.375	.032	.1905	.1887	.2503	.2497	.1865	.1858
JFI-0304-04	3/16	1/4	1/4	.375	.032	.1905	.1887	.2503	.2497	.1865	.1858
JFI-0304-06	3/16	1/4	3/8	.375	.032	.1905	.1877	.2503	.2497	.1865	.1858
JFI-0304-08	3/16	1/4	1/2	.375	.032	.1905	.1887	.2503	.2497	.1865	.1858
JFI-0305-06	3/16	5/16	3/8	.370	.047	.1905	.1887	.3140	.3135	.1875	.1866
JFI-0305-08	3/16	5/16	1/2	.370	.047	.1905	.1887	.3140	.3135	.1875	.1866
JFI-0405-04	1/4	5/16	1/4	.430	.032	.2539	.2516	.3122	.3128	.2481	.2490
JFI-0405-06	1/4	5/16	3/8	.430	.032	.2539	.2516	.3122	.3128	.2481	.2490
JFI-0405-12	1/4	5/16	3/4	.430	.032	.2539	.2516	.3122	.3128	.2481	.2490
JFI-0406-03	1/4	3/8	3/16	.560	.047	.2539	.2516	.3765	.3760	.2500	.2491
JFI-0406-04	1/4	3/8	1/4	.560	.047	.2539	.2516	.3765	.3760	.2500	.2491
JFI-0406-08	1/4	3/8	1/2	.560	.047	.2539	.2516	.3765	.3760	.2500	.2491
JFI-0506-04	5/16	3/8	1/4	.500	.032	.3148	.3125	.3753	.3747	.3115	.3106
JFI-0506-06	5/16	3/8	3/8	.500	.032	.3148	.3125	.3753	.3747	.3115	.3106
JFI-0506-08	5/16	3/8	1/2	.500	.032	.3148	.3125	.3753	.3747	.3115	.3106
JFI-0507-08	5/16	7/16	1/2	.560	.062	.3164	.3141	.4390	.4385	.3125	.3116
JFI-0607-06	3/8	15/32	3/8	.687	.046	.3775	.3750	.4691	.4684	.3740	.3731
JFI-0607-08	3/8	15/32	1/2	.687	.046	.3775	.3750	.4691	.4684	.3740	.3731
JFI-0608-03	3/8	1/2	3/16	.625	.062	.3789	.3766	.5015	.5010	.3750	.3741
JFI-0608-04	3/8	1/2	1/4	.625	.062	.3789	.3766	.5015	.5010	.3750	.3741
JFI-0608-06	3/8	1/2	3/8	.625	.062	.3789	.3766	.5015	.5010	.3750	.3741
JFI-0608-08	3/8	1/2	1/2	.625	.062	.3789	.3766	.5015	.5010	.3750	.3741
JFI-0809-04	1/2	19/32	1/4	.875	.046	.5040	.5000	.5941	.5934	.4990	.4980
JFI-0809-06	1/2	19/32	3/8	.875	.046	.5040	.5000	.5941	.5934	.4990	.4980
JFI-0809-08	1/2	19/32	1/2	.875	.046	.5040	.5000	.5941	.5934	.4990	.4980
JFI-0810-04	1/2	5/8	1/4	.875	.062	.5047	.5020	.6260	.6250	.5000	.4990
JFI-0810-08	1/2	5/8	1/2	.875	.062	.5047	.5020	.6260	.6250	.5000	.4990
JFI-0810-10	1/2	5/8	5/8	.875	.062	.5047	.5020	.6260	.6250	.5000	.4990
JFI-0810-12	1/2	5/8	3/4	.875	.062	.5047	.5020	.6260	.6250	.5000	.4990
JFI-1011-06	5/8	23/32	3/8	.937	.046	.6280	.6253	.7192	.7184	.6250	.6233
JFI-1011-08	5/8	23/32	1/2	.937	.046	.6280	.6253	.7192	.7184	.6250	.6233
JFI-1011-12	5/8	23/32	3/4	1.000	.046	.6295	.6268	.7192	.7184	.6250	.6233
JFI-1012-08	5/8	3/4	1/2	1.000	.062	.6297	.6270	.7510	.7500	.6250	.6240
JFI-1012-12	5/8	3/4	3/4	1.000	.062	.6297	.6270	.7510	.7500	.6250	.6240
JFI-1012-16	5/8	3/4	1	1.000	.062	.6297	.6270	.7510	.7500	.6250	.6240
JFI-1214-08	3/4	7/8	1/2	1.125	.062	.7541	.7505	.8755	.8747	.7491	.7479
JFI-1214-09	3/4	7/8	9/16	1.125	.062	.7541	.7505	.8755	.8747	.7491	.7479
JFI-1214-10	3/4	7/8	5/8	1.125	.062	.7541	.7505	.8755	.8747	.7491	.7479
JFI-1214-12	3/4	7/8	3/4	1.125	.062	.7541	.7505	.8755	.8747	.7491	.7479
JFI-1214-16	3/4	7/8	1	1.125	.062	.7541	.7505	.8755	.8747	.7491	.7479

iglide® J  
Flange - Inch

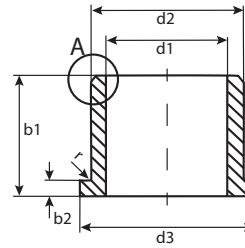
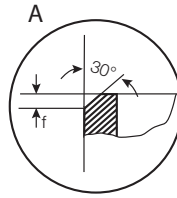
PDF: [www.igus.com/iglide-pdfs](http://www.igus.com/iglide-pdfs)  
CAD: [www.igus.com/iglide-CAD](http://www.igus.com/iglide-CAD)  
RoHS info: [www.igus.com/RoHS](http://www.igus.com/RoHS)





# iglide® Plain Bearings J - Flange Bearing, Inch

iglide® J  
Flange - Inch



For tolerance values  
please refer to page 4.4

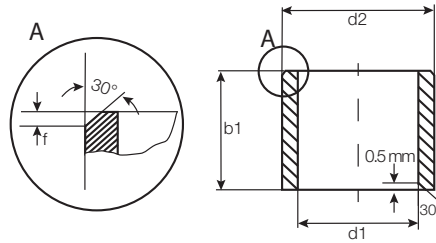
$r = \text{max. } .0197$

Telephone 1-800-521-2747  
Fax 1-401-438-7270

Internet: <http://www.igus.com>  
email: [sales@igus.com](mailto:sales@igus.com)  
QuickSpec: <http://www.igus.com/iglide-quickspec>

Part Number	d1	d2	b1	d3	b2 -.0055	I.D. After Pressfit		Housing Bore		Shaft Size	
						Max.	Min.	Max.	Min.	Max.	Min.
JFI-1216-12	3/4	1	3/4	1.250	.156	.7559	.7525	1.0010	1.0000	.7500	.7490
JFI-1216-16	3/4	1	1	1.250	.156	.7559	.7525	1.0010	1.0000	.7500	.7490
JFI-1416-12	7/8	1	3/4	1.250	.062	.8791	.8757	1.0005	.9997	.8741	.8729
JFI-141618-11	7/8	1	11/16	1.125	.062	.8807	.8774	1.0005	.9997	.8750	.8740
JFI-1418-24	7/8	1 1/8	1 1/2	1.375	.156	.8809	.8775	1.1260	1.1250	.8750	.8740
JFI-1618-12	1	1 1/8	3/4	1.375	.062	1.0041	1.0007	1.1255	1.1247	.9991	.9979
JFI-1618-16	1	1 1/8	1	1.375	.062	1.0041	1.0007	1.1255	1.1247	.9991	.9979
JFI-1620-12	1	1 1/4	3/4	1.500	.188	1.0059	1.0025	1.2510	1.2500	1.0000	.9990
JFI-1620-16	1	1 1/4	1	1.500	.188	1.0059	1.0025	1.2510	1.2500	1.0000	.9990
JFI-1620-24	1	1 1/4	1 1/2	1.500	.188	1.0059	1.0025	1.2510	1.2500	1.0000	.9990
JFI-2024-16	1 1/4	1 1/2	1	1.750	.200	1.2600	1.2531	1.5005	1.4995	1.2500	1.2490
JFI-2024-24	1 1/4	1 1/2	1 1/2	1.750	.200	1.2600	1.2531	1.5005	1.4995	1.2500	1.2490
JFI-2428-16	1 1/2	1 3/4	1	2.000	.125	1.5100	1.5032	1.7505	1.7495	1.5000	1.4990
JFI-2428-24	1 1/2	1 3/4	1 1/2	2.000	.125	1.5100	1.5032	1.7505	1.7495	1.5000	1.4990
JFI-2630-16	1 5/8	1 7/8	1	2.125	.125	1.6350	1.6282	1.8755	1.8745	1.6250	1.6240
JFI-3236-16	2.0	2 1/4	1	2.500	.125	2.0100	2.0032	2.2505	2.2495	2.0000	1.9990

# iglide® Plain Bearings J - Sleeve Bearing, MM



For tolerance values  
please refer to page 4.4

Dimensions according to ISO 3547-1 and special dimensions

Part Number	d1	d1-Tolerance after pressfit in Ø H7	d2	b1 h13	I.D. After Pressfit		Housing Bore		Shaft Size	
					Max.	Min.	Max.	Min.	Max.	Min.
JSM-0104-02	1.5	+0.020 +0.080	4.0	2.0	1.580	1.520	4.012	4.000	1.500	1.475
JSM-0205-02	2.0	+0.020 +0.080	5.0	2.0	2.080	2.020	5.012	5.000	2.000	1.975
JSM-0206-02	2.5	+0.020 +0.080	6.0	2.5	2.080	2.020	6.012	6.000	2.000	1.975
JSM-0304-05	3.0	+0.014 +0.054	4.5	5.0	3.054	3.014	4.512	4.500	3.000	2.975
JSM-0304-09	3.0	+0.014 +0.054	4.5	9.0	3.054	3.014	4.512	4.500	3.000	2.975
JSM-0305-04	3.0	+0.020 +0.080	5.0	4.0	3.080	3.020	5.012	5.000	3.000	2.975
JSM-0308-04	3.0	+0.020 +0.080	8.0	4.0	3.080	3.020	8.015	8.000	3.000	2.975
JSM-0308-05	3.0	+0.020 +0.080	8.0	5.0	3.080	3.020	8.015	8.000	3.000	2.975
JSM-0405-04	4.0	+0.020 +0.068	5.5	4.0	4.068	4.020	5.512	5.500	4.000	3.970
JSM-0405-08	4.0	+0.020 +0.068	5.5	8.0	4.068	4.020	5.512	5.500	4.000	3.970
JSM-0507-046	5.0	+0.020 +0.068	7.0	4.6	5.068	5.020	7.015	7.000	5.000	4.970
JSM-0507-05	5.0	+0.020 +0.068	7.0	5.0	5.068	5.020	7.015	7.000	5.000	4.970
JSM-0507-10	5.0	+0.020 +0.068	7.0	10.0	5.068	5.020	7.015	7.000	5.000	4.970
JSM-0507-15	5.0	+0.020 +0.068	7.0	15.0	5.068	5.020	7.015	7.000	5.000	4.970
JSM-0607-08	6.0	+0.010 +0.058	7.0	8.0	6.058	6.010	7.015	7.000	6.000	5.970
JSM-0607-12.5	6.0	+0.010 +0.058	7.0	12.5	6.058	6.010	7.015	7.000	6.000	5.970
JSM-0607-14	6.0	+0.010 +0.058	7.0	14.0	6.058	6.010	7.015	7.000	6.000	5.970
JSM-0608-043	6.0	+0.020 +0.068	8.0	4.3	6.058	6.020	8.015	8.000	6.000	5.970
JSM-0608-06	6.0	+0.020 +0.068	8.0	6.0	6.068	6.020	8.015	8.000	6.000	5.970
JSM-0608-10	6.0	+0.020 +0.068	8.0	10.0	6.068	6.020	8.015	8.000	6.000	5.970
JSM-0609-06	6.0	+0.030 +0.105	9.0	6.0	6.105	6.030	9.015	9.000	6.000	5.970
JSM-0610-10	6.0	+0.030 +0.105	10.0	10.0	6.105	6.030	10.015	10.000	6.000	5.970
JSM-0709-09	7.0	+0.025 +0.083	9.0	9.0	7.083	7.025	9.015	9.000	7.000	6.964
JSM-0810-04	8.0	+0.025 +0.083	10.0	4.0	8.083	8.025	10.015	10.000	8.000	7.964
JSM-0810-06	8.0	+0.025 +0.083	10.0	6.0	8.083	8.025	10.015	10.000	8.000	7.964
JSM-0810-08	8.0	+0.025 +0.083	10.0	8.0	8.083	8.025	10.015	10.000	8.000	7.964
JSM-0810-10	8.0	+0.025 +0.083	10.0	10.0	8.083	8.025	10.015	10.000	8.000	7.964
JSM-0810-12	8.0	+0.025 +0.083	10.0	12.0	8.083	8.025	10.015	10.000	8.000	7.964
JSM-0810-16	8.0	+0.025 +0.083	10.0	16.0	8.083	8.025	10.015	10.000	8.000	7.964
JSM-0812-10	8.0	+0.040 +0.130	12.0	10.0	8.130	8.040	12.018	12.000	8.000	7.964
JSM-0812-12	8.0	+0.040 +0.130	12.0	12.0	8.130	8.040	12.018	12.000	8.000	7.964
JSM-1012-05	10.0	+0.025 +0.083	12.0	5.0	10.083	10.025	12.018	12.000	10.000	9.964
JSM-1012-06	10.0	+0.025 +0.083	12.0	6.0	10.083	10.025	12.018	12.000	10.000	9.964
JSM-1012-08	10.0	+0.025 +0.083	12.0	8.0	10.083	10.025	12.018	12.000	10.000	9.964
JSM-1012-10	10.0	+0.025 +0.083	12.0	10.0	10.083	10.025	12.018	12.000	10.000	9.964
JSM-1012-11	10.0	+0.025 +0.083	12.0	11.0	10.083	10.025	12.018	12.000	10.000	9.964
JSM-1012-12	10.0	+0.025 +0.083	12.0	12.0	10.083	10.025	12.018	12.000	10.000	9.964
JSM-1012-15	10.0	+0.025 +0.083	12.0	15.0	10.083	10.025	12.018	12.000	10.000	9.964
JSM-1012-20	10.0	+0.025 +0.083	12.0	20.0	10.083	10.025	12.018	12.000	10.000	9.964
JSM-1014-10	10.0	+0.040 +0.130	14.0	10.0	10.130	10.040	14.018	14.000	10.000	9.964

iglide® J  
Sleeve - MM

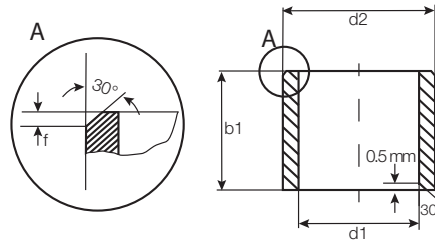
PDF: [www.igus.com/iglide-pdfs](http://www.igus.com/iglide-pdfs)  
CAD: [www.igus.com/iglide-CAD](http://www.igus.com/iglide-CAD)  
RoHS info: [www.igus.com/RoHS](http://www.igus.com/RoHS)





# iglide® Plain Bearings J - Sleeve Bearing, MM

iglide® J  
Sleeve - MM



For tolerance values  
please refer to page 4.4

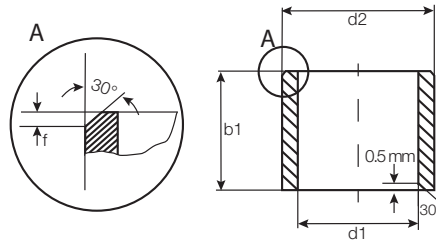
Dimensions according to ISO 3547-1 and special dimensions

Part Number	d1		d2	b1	I.D. After Pressfit		Housing Bore		Shaft Size	
	after pressfit in Ø H7				h13	Max.	Min.	Max.	Min.	Max.
JSM-1014-16	10.0	+0.040 +0.130	14.0	16.0	10.130	10.040	14.018	14.000	10.000	9.964
JSM-1214-06	12.0	+0.032 +0.102	14.0	6.0	12.102	12.032	14.018	14.000	12.000	11.957
JSM-1214-08	12.0	+0.032 +0.102	14.0	8.0	12.102	12.032	14.018	14.000	12.000	11.957
JSM-1214-09	12.0	+0.032 +0.102	14.0	9.0	12.102	12.032	14.018	14.000	12.000	11.957
JSM-1214-10	12.0	+0.032 +0.102	14.0	10.0	12.102	12.032	14.018	14.000	12.000	11.957
JSM-1214-15	12.0	+0.032 +0.102	14.0	15.0	12.102	12.032	14.018	14.000	12.000	11.957
JSM-1216-12	12.0	+0.050 +0.160	16.0	12.0	12.160	12.050	16.018	16.000	12.000	11.957
JSM-1216-17	12.0	+0.050 +0.160	16.0	17.0	12.160	12.050	16.018	16.000	12.000	11.957
JSM-1416-05	14.0	+0.032 +0.102	16.0	5.0	14.102	14.032	16.018	16.000	14.000	13.957
JSM-1416-08	14.0	+0.032 +0.102	16.0	8.0	14.102	14.032	16.018	16.000	14.000	13.957
JSM-1416-10	14.0	+0.032 +0.102	16.0	10.0	14.102	14.032	16.018	16.000	14.000	13.957
JSM-1416-15	14.0	+0.032 +0.102	16.0	15.0	14.102	14.032	16.018	16.000	14.000	13.957
JSM-1416-20	14.0	+0.032 +0.102	16.0	20.0	14.102	14.032	16.018	16.000	14.000	13.957
JSM-1416-25	14.0	+0.032 +0.102	16.0	25.0	14.102	14.032	16.018	16.000	14.000	13.957
JSM-1418-18	14.0	+0.032 +0.102	18.0	18.0	14.102	14.032	18.018	18.000	14.000	13.957
JSM-1517-12	15.0	+0.032 +0.102	17.0	12.0	15.102	15.032	17.018	17.000	15.000	14.957
JSM-1517-20	15.0	+0.032 +0.102	17.0	20.0	15.102	15.032	17.018	17.000	15.000	14.957
JSM-1618-10	16.0	+0.032 +0.102	18.0	10.0	16.102	16.032	18.018	18.000	16.000	15.957
JSM-1618-12	16.0	+0.032 +0.102	18.0	12.0	16.102	16.032	18.018	18.000	16.000	15.957
JSM-1618-15	16.0	+0.032 +0.102	18.0	15.0	16.102	16.032	18.018	18.000	16.000	15.957
JSM-1618-20	16.0	+0.032 +0.102	18.0	20.0	16.102	16.032	18.018	18.000	16.000	15.957
JSM-1620-16	16.0	+0.050 +0.160	20.0	16.0	16.160	16.050	20.021	20.000	16.000	15.957
JSM-1622-16	16.0	+0.050 +0.160	22.0	16.0	16.160	16.050	22.021	22.000	16.000	15.957
JSM-1622-20	16.0	+0.050 +0.160	22.0	20.0	16.160	16.050	22.021	22.000	16.000	15.957
JSM-1820-15	18.0	+0.032 +0.102	20.0	15.0	18.102	18.032	20.021	20.000	18.000	17.957
JSM-1820-20	18.0	+0.032 +0.102	20.0	20.0	18.102	18.032	20.021	20.000	18.000	17.957
JSM-2022-20	20.0	+0.040 +0.124	22.0	20.0	20.124	20.040	22.021	22.000	20.000	19.948
JSM-2022-30	20.0	+0.040 +0.124	22.0	30.0	20.124	20.040	22.021	22.000	20.000	19.948
JSM-2023-15	20.0	+0.040 +0.124	23.0	15.0	20.124	20.040	23.021	23.000	20.000	19.948
JSM-2023-20	20.0	+0.040 +0.124	23.0	20.0	20.124	20.040	23.021	23.000	20.000	19.948
JSM-2023-25	20.0	+0.040 +0.124	23.0	25.0	20.124	20.040	23.021	23.000	20.000	19.948
JSM-2026-06	20.0	+0.065 +0.195	26.0	6.0	20.124	20.040	26.021	26.000	20.000	19.948
JSM-2026-20	20.0	+0.065 +0.195	26.0	20.0	20.124	20.040	26.021	26.000	20.000	19.948
JSM-2026-25	20.0	+0.065 +0.195	26.0	25.0	20.124	20.040	26.021	26.000	20.000	19.948
JSM-2026-30	20.0	+0.065 +0.195	26.0	30.0	20.124	20.040	26.021	26.000	20.000	19.948
JSM-2427-25	24.0	+0.040 +0.124	27.0	25.0	24.124	24.040	27.021	27.000	24.000	23.948
JSM-2427-46	24.0	+0.040 +0.124	27.0	46.0	24.124	24.040	27.021	27.000	24.000	23.948
JSM-2528-12	25.0	+0.040 +0.124	28.0	12.0	25.124	25.040	28.021	28.000	25.000	24.948
JSM-2528-20	25.0	+0.040 +0.124	28.0	20.0	25.124	25.040	28.021	28.000	25.000	24.948
JSM-2528-30	25.0	+0.040 +0.124	28.0	30.0	25.124	25.040	28.021	28.000	25.000	24.948

Telephone 1-800-521-2747  
Fax 1-401-438-7270

Internet: <http://www.igus.com>  
email: [sales@igus.com](mailto:sales@igus.com)  
QuickSpec: <http://www.igus.com/iglide-quickspec>

# iglide® Plain Bearings J - Sleeve Bearing, MM



For tolerance values  
please refer to page 4.4

Dimensions according to ISO 3547-1 and special dimensions

Part Number	d1	d1-Tolerance after pressfit in Ø H7	d2	b1 h13	I.D. After Pressfit		Housing Bore		Shaft Size	
					Max.	Min.	Max.	Min.	Max.	Min.
JSM-2528-60	25.0	+0.040 +0.124	28.0	60.0	25.124	25.040	28.021	28.000	25.000	24.948
JSM-2532-25	25.0	+0.065 +0.195	32.0	25.0	25.195	25.065	32.025	32.000	25.000	24.948
JSM-2532-35	25.0	+0.065 +0.195	32.0	35.0	25.195	25.065	32.025	32.000	25.000	24.948
JSM-2630-20	26.0	+0.065 +0.195	30.0	20.0	26.195	26.065	30.025	30.000	26.000	25.948
JSM-2832-20	28.0	+0.065 +0.195	32.0	20.0	28.195	28.065	32.025	32.000	28.000	27.948
JSM-2836-29	28.0	+0.065 +0.195	36.0	29.0	28.195	28.065	36.025	36.000	28.000	27.948
JSM-3034-20	30.0	+0.040 +0.124	34.0	20.0	30.124	30.040	34.025	34.000	30.000	29.948
JSM-3034-25	30.0	+0.040 +0.124	34.0	25.0	30.124	30.040	34.025	34.000	30.000	29.948
JSM-3034-30	30.0	+0.040 +0.124	34.0	30.0	30.124	30.040	34.025	34.000	30.000	29.948
JSM-3038-40	30.0	+0.065 +0.195	38.0	40.0	30.195	30.065	38.025	38.000	30.000	29.948
JSM-3236-20	32.0	+0.050 +0.150	36.0	20.0	32.150	32.050	36.025	36.000	32.000	31.938
JSM-3236-30	32.0	+0.050 +0.150	36.0	30.0	32.150	32.050	36.025	36.000	32.000	31.938
JSM-3236-40	32.0	+0.050 +0.150	36.0	40.0	32.150	32.050	36.025	36.000	32.000	31.938
JSM-3539-20	35.0	+0.050 +0.150	39.0	20.0	35.150	35.050	39.025	39.000	35.000	34.938
JSM-3539-30	35.0	+0.050 +0.150	39.0	30.0	35.150	35.050	39.025	39.000	35.000	34.938
JSM-3539-40	35.0	+0.050 +0.150	39.0	40.0	35.150	35.050	39.025	39.000	35.000	34.938
JSM-3640-45	36.0	+0.050 +0.150	40.0	45.0	36.150	36.050	40.025	40.000	36.000	35.938
JSM-4044-30	40.0	+0.050 +0.150	44.0	30.0	40.150	40.050	44.025	44.000	40.000	39.938
JSM-4044-35	40.0	+0.050 +0.150	44.0	35.0	40.150	40.050	44.025	44.000	40.000	39.938
JSM-4044-40	40.0	+0.050 +0.150	44.0	40.0	40.150	40.050	44.025	44.000	40.000	39.938
JSM-5055-30	50.0	+0.050 +0.150	55.0	30.0	50.150	50.050	55.030	55.000	50.000	49.938
JSM-5055-50	50.0	+0.050 +0.150	55.0	50.0	50.150	50.050	55.030	55.000	50.000	49.938
JSM-5560-60	55.0	+0.060 +0.180	60.0	60.0	55.180	55.060	60.030	60.000	55.000	54.926
JSM-6065-60	60.0	+0.060 +0.180	65.0	60.0	60.180	60.060	65.030	65.000	60.000	59.926
JSM-7580-60	75.0	+0.060 +0.180	80.0	60.0	75.180	75.060	80.030	80.000	75.000	74.926

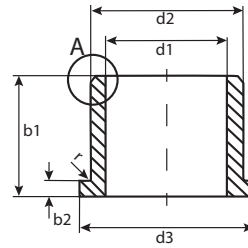
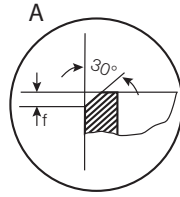
PDF: [www.igus.com/iglide-pdfs](http://www.igus.com/iglide-pdfs)  
 CAD: [www.igus.com/iglide-CAD](http://www.igus.com/iglide-CAD)  
 RoHS info: [www.igus.com/RoHS](http://www.igus.com/RoHS)





# iglide® Plain Bearings J - Flange Bearing, MM

iglide® J  
Flange - MM



For tolerance values  
please refer to page 4.4

r = max. 0.5

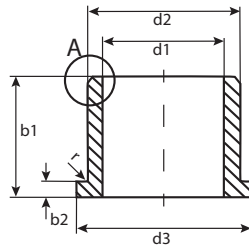
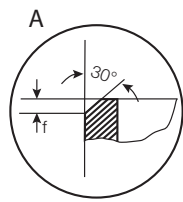
Dimensions according to ISO 3547-1 and special dimensions

Part Number	d1 <sup>1)</sup>	d1-Tolerance	d2	d3	b1	b2	I.D. After Pressfit		Housing Bore		Shaft Size	
	After Pressfit in Ø H7			d13	h13	-0.14	Max.	Min.	Max.	Min.	Max.	Min.
JFM-0304-05	3.0	+0.014 +0.054	4.5	7.5	5.0	0.75	3.054	3.014	4.512	4.500	3.000	2.975
JFM-0405-03	4.0	+0.020 +0.068	5.5	9.5	3.0	0.75	4.068	4.020	5.512	5.000	4.000	3.970
JFM-0405-06	4.0	+0.020 +0.068	5.5	9.5	6.0	0.75	4.068	4.020	5.512	5.000	4.000	3.970
JFM-0408-04	4.0	+0.030 +0.105	8.0	12.0	4.0	2.0	4.105	4.030	8.015	8.000	4.000	3.970
JFM-0507-03	5.0	+0.020 +0.068	7.0	11.0	3.0	1.0	5.068	5.020	7.015	7.000	5.000	4.970
JFM-0507-05	5.0	+0.020 +0.068	7.0	11.0	5.0	1.0	5.068	5.020	7.015	7.000	5.000	4.970
JFM-0608-04	6.0	+0.020 +0.068	8.0	12.0	4.0	1.0	6.068	6.020	8.015	8.000	6.000	5.970
JFM-0608-06	6.0	+0.020 +0.068	8.0	12.0	6.0	1.0	6.068	6.020	8.015	8.000	6.000	5.970
JFM-0608-08	6.0	+0.020 +0.068	8.0	12.0	8.0	1.0	6.068	6.020	8.015	8.000	6.000	5.970
JFM-0608-10	6.0	+0.020 +0.068	8.0	12.0	10.0	1.0	6.068	6.020	8.015	8.000	6.000	5.970
JFM-0610-10	6.0	+0.030 +0.105	10.0	14.0	10.0	2.0	6.105	6.030	10.015	10.000	6.000	5.970
JFM-0810-05	8.0	+0.025 +0.083	10.0	15.0	5.0	1.0	8.083	8.025	10.015	10.000	8.000	7.964
JFM-0810-06	8.0	+0.025 +0.083	10.0	15.0	6.0	1.0	8.083	8.025	10.015	10.000	8.000	7.964
JFM-0810-07	8.0	+0.025 +0.083	10.0	15.0	7.0	1.0	8.083	8.025	10.015	10.000	8.000	7.964
JFM-0810-08	8.0	+0.025 +0.083	10.0	15.0	8.0	1.0	8.083	8.025	10.015	10.000	8.000	7.964
JFM-0810-10	8.0	+0.025 +0.083	10.0	15.0	10.0	1.0	8.083	8.025	10.015	10.000	8.000	7.964
JFM-081014-10	8.0	+0.025 +0.083	10.0	14.0	10.0	1.0	8.083	8.025	10.015	10.000	8.000	7.964
JFM-081016-11	8.0	+0.025 +0.083	10.0	16.0	11.0	1.0	8.083	8.025	10.015	10.000	8.000	7.964
JFM-0812-05	8.0	+0.040 +0.130	12.0	16.0	5.0	2.0	8.130	8.040	12.018	12.000	8.000	7.964
JFM-0812-06	8.0	+0.040 +0.130	12.0	16.0	6.0	2.0	8.115	8.025	12.018	12.000	8.000	7.964
JFM-0812-30	8.0	+0.040 +0.130	12.0	16.0	30.0	2.0	8.130	8.040	12.018	12.000	8.000	7.964
JFM-101215-035	10.0	+0.025 +0.083	12.0	15.0	3.5	1.0	10.083	10.025	12.018	12.000	10.000	9.964
JFM-1012-05	10.0	+0.025 +0.083	12.0	18.0	5.0	1.0	10.083	10.025	12.018	12.000	10.000	9.964
JFM-1012-09	10.0	+0.025 +0.083	12.0	18.0	9.0	1.0	10.083	10.025	12.018	12.000	10.000	9.964
JFM-1012-10	10.0	+0.025 +0.083	12.0	18.0	10.0	1.0	10.083	10.025	12.018	12.000	10.000	9.964
JFM-1012-12	10.0	+0.025 +0.083	12.0	18.0	12.0	1.0	10.083	10.025	12.018	12.000	10.000	9.964
JFM-1012-15	10.0	+0.025 +0.083	12.0	18.0	15.0	1.0	10.083	10.025	12.018	12.000	10.000	9.964
JFM-1012-18	10.0	+0.025 +0.083	12.0	18.0	18.0	1.0	10.083	10.025	12.018	12.000	10.000	9.964
JFM-1014-14	10.0	+0.040 +0.130	14.0	17.5	14.0	1.0	10.130	10.0410	14.018	14.000	10.000	9.964
JFM-101420-12	10.0	+0.040 +0.130	14.0	20.0	12.0	2.0	10.130	10.040	14.018	14.000	10.000	9.964
JFM-1016-10	10.0	+0.040 +0.130	16.0	22.0	10.0	3.0	10.130	10.040	16.018	16.000	10.000	9.964
JFM-1016-16	10.0	+0.040 +0.130	16.0	22.0	16.0	3.0	10.130	10.040	16.018	16.000	10.000	9.964
JFM-1113-05	11.0	+0.032 +0.102	13.0	18.0	5.0	1.0	11.102	11.032	13.018	13.000	11.000	10.964
JFM-1214-05	12.0	+0.032 +0.102	14.0	20.0	5.0	1.0	12.102	12.032	14.018	14.000	12.000	11.957
JFM-1214-07	12.0	+0.032 +0.102	14.0	20.0	7.0	1.0	12.102	12.032	14.018	14.000	12.000	11.957
JFM-1214-09	12.0	+0.032 +0.102	14.0	20.0	9.0	1.0	12.102	12.032	14.018	14.000	12.000	11.957
JFM-121418-10	12.0	+0.032 +0.102	14.0	18.0	10.0	1.0	12.102	12.032	14.018	14.000	12.000	11.957
JFM-1214-12	12.0	+0.032 +0.102	14.0	20.0	12.0	1.0	12.102	12.032	14.018	14.000	12.000	11.957
JFM-1214-15	12.0	+0.032 +0.102	14.0	20.0	15.0	1.0	12.102	12.032	14.018	14.000	12.000	11.957
JFM-1218-08	12.0	+0.050 +0.160	18.0	24.0	8.0	3.0	12.160	12.050	18.018	18.000	12.000	11.957
JFM-1218-12	12.0	+0.050 +0.160	18.0	24.0	12.0	3.0	12.160	12.050	18.018	18.000	12.000	11.957
JFM-1218-20	12.0	+0.050 +0.160	18.0	22.0	20.0	3.0	12.160	12.050	18.018	18.000	12.000	11.957

Telephone 1-800-521-2747  
Fax 1-401-438-7270

Internet: <http://www.igus.com>  
email: [sales@igus.com](mailto:sales@igus.com)  
QuickSpec: <http://www.igus.com/iglide-quickspec>

# iglide® Plain Bearings J - Flange Bearing, MM



For tolerance values  
please refer to page 4.4

$r = \max. 0.5$

Dimensions according to ISO 3547-1 and special dimensions

Part Number	d1 <sup>1)</sup>	d1-Tolerance After Pressfit in $\varnothing$ H7	d2	d3 d13	b1 h13	b2 -0.14	I.D. After Pressfit		Housing Bore		Shaft Size	
							Max.	Min.	Max.	Min.	Max.	Min.
JFM-1416-03	14.0	+0.032 +0.102	16.0	22.0	3.0	1.0	14.102	14.032	16.018	16.000	14.000	13.957
JFM-1416-10	14.0	+0.032 +0.102	16.0	22.0	10.0	1.0	14.102	14.032	16.018	16.000	14.000	13.957
JFM-1416-12	14.0	+0.032 +0.102	16.0	22.0	12.0	1.0	14.102	14.032	16.018	16.000	14.000	13.957
JFM-1416-17	14.0	+0.032 +0.102	16.0	22.0	17.0	1.0	14.102	14.032	16.018	16.000	14.000	13.957
JFM-141822-20	14.0	+0.032 +0.102	18.0	22.0	20.0	2.0	14.102	14.032	18.018	18.000	14.000	13.957
JFM-1420-20	14.0	+0.050 +0.160	20.0	25.0	20.0	3.0	14.160	14.050	20.021	20.000	14.000	13.957
JFM-1517-09	15.0	+0.032 +0.102	17.0	23.0	9.0	1.0	15.102	15.032	17.018	17.000	15.000	14.957
JFM-1517-12	15.0	+0.032 +0.102	17.0	23.0	12.0	1.0	15.102	15.032	17.018	17.000	15.000	14.957
JFM-1517-17	15.0	+0.032 +0.102	17.0	23.0	17.0	1.0	15.102	15.032	17.018	17.000	15.000	14.957
JFM-1521-20	15.0	+0.050 +0.160	21.0	27.0	20.0	3.0	15.160	15.050	21.021	21.000	15.000	14.957
JFM-1618-17	16.0	+0.032 +0.102	18.0	24.0	17.0	1.0	16.102	16.032	18.018	18.000	16.000	15.957
JFM-1622-12	16.0	+0.050 +0.160	22.0	28.0	12.0	3.0	16.160	16.050	22.021	22.000	16.000	15.957
JFM-1622-15	16.0	+0.050 +0.160	22.0	28.0	15.0	3.0	16.160	16.050	22.021	22.000	16.000	15.957
JFM-1622-20	16.0	+0.050 +0.160	22.0	28.0	20.0	3.0	16.160	16.050	22.021	22.000	16.000	15.957
JFM-1622-25	16.0	+0.050 +0.160	22.0	28.0	25.0	3.0	16.160	16.050	22.021	22.000	16.000	15.957
JFM-1719-09	17.0	+0.032 +0.102	19.0	25.0	9.0	1.0	17.102	17.032	19.018	19.000	17.000	16.957
JFM-1719-21	17.0	+0.032 +0.102	19.0	25.0	21.0	1.0	17.102	17.032	19.018	19.000	17.000	16.957
JFM-1820-04	18.0	+0.032 +0.102	20.0	26.0	4.0	1.0	18.102	18.032	20.021	20.000	18.000	17.957
JFM-1820-12	18.0	+0.032 +0.102	20.0	26.0	12.0	1.0	18.102	18.032	20.021	20.000	18.000	17.957
JFM-1820-22	18.0	+0.032 +0.102	20.0	26.0	22.0	1.0	18.102	18.032	20.021	20.000	18.000	17.957
JFM-1922-36	19.0	+0.040 +0.124	22.0	26.0	36.0	1.0	19.124	19.040	22.021	22.000	19.000	18.957
JFM-2023-11	20.0	+0.040 +0.124	23.0	30.0	11.0	1.5	20.124	20.040	23.021	23.000	20.000	19.948
JFM-2023-15.5	20.0	+0.040 +0.124	23.0	30.0	15.5	1.5	20.124	20.040	23.021	23.000	20.000	19.948
JFM-2023-21	20.0	+0.040 +0.124	23.0	30.0	21.5	1.5	20.124	20.040	23.021	23.000	20.000	19.948
JFM-202530-15	20.0	+0.065 +0.195	25.0	30.0	15.0	2.5	20.195	20.065	25.021	25.000	20.000	19.948
JFM-2026-15	20.0	+0.065 +0.195	26.0	32.0	15.0	3.0	20.195	20.065	26.021	26.000	20.000	19.948
JFM-2026-20	20.0	+0.065 +0.195	26.0	32.0	20.0	3.0	20.195	20.065	26.021	26.000	20.000	19.948
JFM-2026-25	20.0	+0.065 +0.195	26.0	32.0	25.0	3.0	20.195	20.065	26.021	26.000	20.000	19.948
JFM-2026-30	20.0	+0.065 +0.195	26.0	32.0	30.0	3.0	20.195	20.065	26.021	26.000	20.000	19.948
JFM-222532-08	22.0	+0.040 +0.124	25.0	32.0	8.0	1.5	22.124	22.040	25.021	25.000	22.000	21.948
JFM-2430-30	24.0	+0.040 +0.124	30.0	36.0	30.0	3.0	24.124	24.040	30.021	30.000	24.000	23.948
JFM-2528-06	25.0	+0.040 +0.124	28.0	35.0	6.0	1.5	25.124	25.040	28.021	28.000	25.000	24.948
JFM-2528-14.5	25.0	+0.040 +0.124	28.0	35.0	14.5	1.5	25.124	25.040	28.021	28.000	25.000	24.948
JFM-2528-21	25.0	+0.040 +0.124	28.0	35.0	21.0	1.5	25.124	25.040	28.021	28.000	25.000	24.948
JFM-2532-20	25.0	+0.065 +0.195	32.0	38.0	20.0	4.0	25.195	25.065	32.021	32.000	25.000	24.948
JFM-2532-25	25.0	+0.065 +0.195	32.0	38.0	25.0	4.0	25.195	25.065	32.021	32.000	25.000	24.948
JFM-2532-40	25.0	+0.065 +0.195	32.0	38.0	40.0	2.0	25.195	25.065	32.021	32.000	25.000	24.948
JFM-3034-20	30.0	+0.040 +0.124	34.0	42.0	20.0	2.0	30.124	30.040	34.025	34.000	30.000	29.948
JFM-3034-26	30.0	+0.040 +0.124	34.0	42.0	26.0	2.0	30.124	30.040	34.025	34.000	30.000	29.948
JFM-3038-20	30.0	+0.065 +0.195	38.0	44.0	20.0	4.0	30.195	30.065	38.025	38.000	30.000	29.948
JFM-3038-30	30.0	+0.065 +0.195	38.0	44.0	30.0	4.0	30.195	30.065	38.025	38.000	30.000	29.948
JFM-3038-36	30.0	+0.065 +0.195	38.0	44.0	36.0	4.0	30.195	30.065	38.025	38.000	30.000	29.948

iglide® J  
Flange - MM

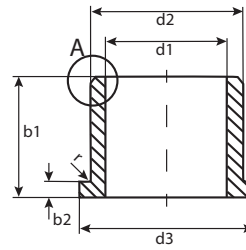
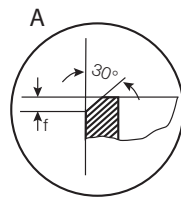
PDF: [www.igus.com/iglide-pdfs](http://www.igus.com/iglide-pdfs)  
CAD: [www.igus.com/iglide-CAD](http://www.igus.com/iglide-CAD)  
RoHS info: [www.igus.com/RoHS](http://www.igus.com/RoHS)





# iglide® Plain Bearings J - Flange Bearing, MM

iglide® J  
Flange - MM



For tolerance values  
please refer to page 4.4

$r = \max. 0.5$

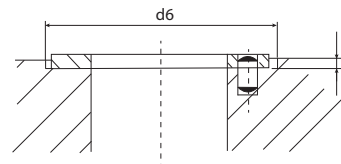
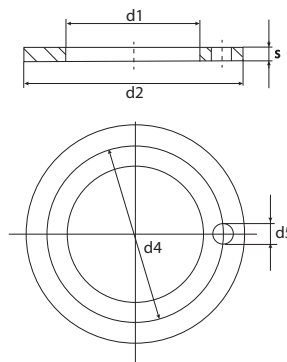
Dimensions according to ISO 3547-1 and special dimensions

Part Number	d1 <sup>1)</sup>		d2	d3	b1	b2	I.D. After Pressfit		Housing Bore		Shaft Size	
	After Pressfit in $\text{Ø H7}$						Max.	Min.	Max.	Min.	Max.	Min.
JFM-3539-12	35.0	+0.050 +0.150	39.0	47.0	12.0	2.0	35.150	35.050	39.025	39.000	35.000	34.938
JFM-3539-16	35.0	+0.050 +0.150	39.0	47.0	16.0	2.0	35.150	35.050	39.025	39.000	35.000	34.938
JFM-3539-26	35.0	+0.050 +0.150	39.0	47.0	26.0	2.0	35.150	35.050	39.025	39.000	35.000	34.938
JFM-4044-20	40.0	+0.050 +0.150	44.0	52.0	20.0	2.0	40.150	40.050	44.025	44.000	40.000	39.938
JFM-4044-30	40.0	+0.050 +0.150	44.0	52.0	30.0	2.0	40.150	40.050	44.025	44.000	40.000	39.938
JFM-4044-40	40.0	+0.050 +0.150	44.0	52.0	40.0	2.0	40.150	40.050	44.025	44.000	40.000	39.938
JFM-4550-20	45.0	+0.050 +0.150	50.0	58.0	20.0	2.0	45.150	45.050	50.025	50.000	45.000	44.938
JFM-4550-50	45.0	+0.050 +0.150	50.0	58.0	50.0	2.0	45.150	45.050	50.025	50.000	45.000	44.938
JFM-5055-50	50.0	+0.050 +0.150	55.0	63.0	50.0	2.0	50.150	50.050	55.030	55.000	50.000	54.926
JFM-556082-30	55.0	+0.060 +0.180	60.0	82.0	30.0	2.0	55.180	55.060	60.030	60.000	55.000	54.926
JFM-5560-50	55.0	+0.060 +0.180	60.0	68.0	50.0	2.0	55.180	55.060	60.030	60.000	55.000	54.926
JFM-6065-50	60.0	+0.060 +0.180	65.0	73.0	50.0	2.0	60.180	60.060	65.030	65.000	60.000	59.926
JFM-7075-50	70.0	+0.060 +0.180	75.0	83.0	50.0	2.0	70.180	70.060	75.030	75.000	70.000	69.926

Telephone 1-800-521-2747  
Fax 1-401-438-7270

Internet: <http://www.igus.com>  
email: [sales@igus.com](mailto:sales@igus.com)  
QuickSpec: <http://www.igus.com/iglide-quickspec>

# iglide® Plain Bearings J - Thrust Washer, MM



Dimensions according to ISO 3547-1 and special dimensions

Part Number	d1	d2	s	d4	d5	h	d6
	0.3	-0.3	-0.05	-0.12 +0.12	+0.375 +0.125	+0.2 0.2	+0.12
JTM-1224-015	12.0	24.0	1.5	18.0	1.5	1.0	24.0
JTM-2036-015	20.0	36.0	1.5	28.0	3.0	1.0	36.0