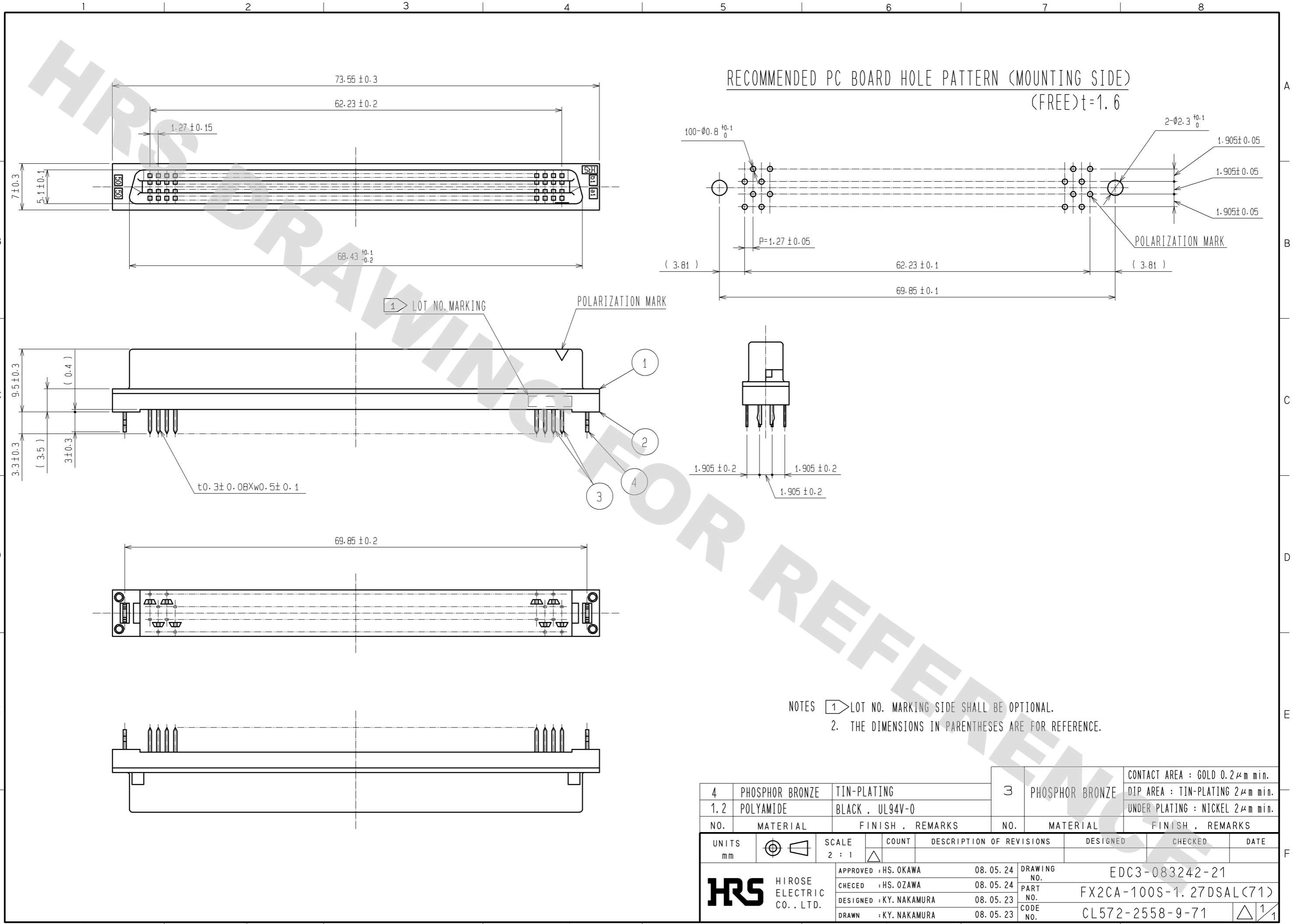


DRAWING FOR REFERENCE: This is subject to change without notice
08/11/2012



NOTES
 1. LOT NO. MARKING SIDE SHALL BE OPTIONAL.
 2. THE DIMENSIONS IN PARENTHESES ARE FOR REFERENCE.

4	PHOSPHOR BRONZE	TIN-PLATING	3	PHOSPHOR BRONZE	CONTACT AREA : GOLD 0.2μm min. DIP AREA : TIN-PLATING 2μm min. UNDER PLATING : NICKEL 2μm min.
1,2	POLYAMIDE	BLACK , UL94V-0			
NO.	MATERIAL	FINISH , REMARKS	NO.	MATERIAL	FINISH , REMARKS
UNITS mm		SCALE 2 : 1	COUNT △	DESCRIPTION OF REVISIONS	
DESIGNED		CHECKED		DATE	
APPROVED : HS. OKAWA		08.05.24		DRAWING NO. EDC3-083242-21	
CHECED : HS. OZAWA		08.05.24		PART NO. FX2CA-100S-1.27DSAL(71)	
DESIGNED : KY. NAKAMURA		08.05.23		CODE NO. CL572-2558-9-71	
DRAWN : KY. NAKAMURA		08.05.23		△ 1/1	