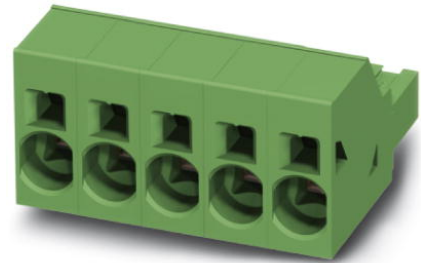


## SPC 16/ 2-ST-10,16

Order No.: 1711268

The figure shows a 5-pos. version of the product



Plug, spring-cage connection, no. of positions: 2, pitch: 10.16 mm, U = 1000 V, I = 76 A, rated cross section = 16 mm<sup>2</sup>

**Commercial data**

EAN	4046356080842
Pack	50 Pcs.
Customs tariff	85366990
Weight/Piece	0.01668 KG
Catalog page information	Page 370 (CC-2007)

[http://  
www.download.phoenixcontact.com](http://www.download.phoenixcontact.com)  
Please note that the data given here has been taken from the online catalog. For comprehensive information and data, please refer to the user documentation. The General Terms and Conditions of Use apply to Internet downloads.

**Technical data****Dimensions / positions**

Pitch	10.16 mm
Dimension a	10.16 mm
Number of positions	2

**Technical data**

Insulating material group	I
Rated surge voltage (III/3)	8 kV
Rated surge voltage (III/2)	8 kV
Rated surge voltage (II/2)	6 kV
Rated voltage (III/2)	1000 V

Rated voltage (U/2)	1000 V
Connection in acc. with standard	EN-VDE
Nominal current I <sub>N</sub>	76 A
Nominal voltage U <sub>N</sub>	1000 V
Nominal cross section	16 mm <sup>2</sup>
Maximum load current	76 A
Insulating material	PA
Inflammability class acc. to UL 94	V0
Stripping length	18 mm

#### Connection data

Conductor cross section solid min.	0.75 mm <sup>2</sup>
Conductor cross section solid max.	16 mm <sup>2</sup>
Conductor cross section stranded min.	0.75 mm <sup>2</sup>
Conductor cross section stranded max.	16 mm <sup>2</sup>
Conductor cross section stranded, with ferrule without plastic sleeve min.	0.75 mm <sup>2</sup>
Conductor cross section stranded, with ferrule without plastic sleeve max.	16 mm <sup>2</sup>
Conductor cross section stranded, with ferrule with plastic sleeve min.	0.75 mm <sup>2</sup>
Conductor cross section stranded, with ferrule with plastic sleeve max.	10 mm <sup>2</sup>
Conductor cross section AWG/kcmil min.	18
Conductor cross section AWG/kcmil max	4
2 conductors with same cross section, stranded, TWIN ferrules with plastic sleeve, min.	0.75 mm <sup>2</sup>
2 conductors with same cross section, stranded, TWIN ferrules with plastic sleeve, max.	4 mm <sup>2</sup>

#### Certificates / Approvals

Approval logo



#### CUL

Nominal voltage U <sub>N</sub>	600 V
--------------------------------	-------

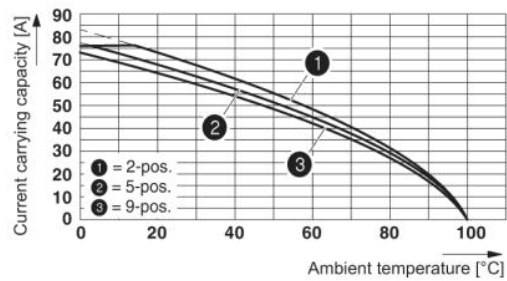
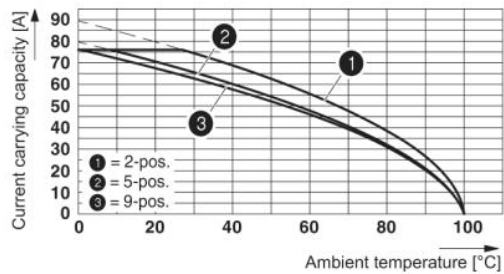
Nominal current $I_N$	66 A
AWG/kcmil	18-4

### UL

Nominal voltage $U_N$	600 V
Nominal current $I_N$	66 A
AWG/kcmil	18-4
Certification	CB, CCA, CUL, SEV, UL

### Drawings

#### Diagram



#### Dimensioned drawing

