

PLEASE CHECK WWW.MOLEX.COM FOR LATEST PART INFORMATION

Part Number: [171692-0106](#)
Status: **Active**
Overview: Mega-Fit® Power Connectors
Description: Mega-Fit® Receptacle Housing, Dual Row, 6 Circuit, UL 94 V-0, Bag

Documents:

3D Model	Application Specification AS-76823-100 (PDF)
Drawing (PDF)	Test Summary TS-170001-001 (PDF)
Product Specification PS-76823-100 (PDF)	RoHS Certificate of Compliance (PDF)

Agency Certification

CSA	LR19980
UL	E29179

General

Product Family	Crimp Housings
Series	171692
Application	Power, Wire-to-Board, Wire-to-Wire
Overview	Mega-Fit® Power Connectors
Product Name	Mega-Fit®
UPC	887191246864

Physical

Circuits (maximum)	6
Circuits Detail	6
Color - Resin	Black
Flammability	94V-0
Gender	Male
Glow-Wire Compliant	No
Lock to Mating Part	Yes
Material - Resin	PBT
Net Weight	2.720/g
Number of Rows	2
Packaging Type	Bag
Panel Mount	No
Pitch - Mating Interface	5.70mm
Pitch - Termination Interface	5.70mm
Polarized to Mating Part	Yes
Temperature Range - Operating	-40°C to +120°C

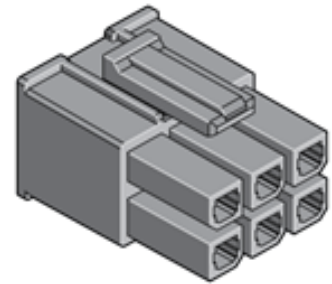
Electrical

Current - Maximum per Contact	23A
-------------------------------	-----

Material Info

Reference - Drawing Numbers

Application Specification	AS-76823-100
Product Specification	PS-76823-100
Sales Drawing	SD-171692-0100
Test Summary	TS-170001-001



Series

image - Reference only

EU RoHS

ELV and RoHS Compliant

REACH SVHC

Contains SVHC: No Low-Halogen Status Not Low-Halogen

China RoHS



Need more information on product environmental compliance?

Email productcompliance@molex.com
 For a multiple part number RoHS Certificate of Compliance, [click here](#)

Please visit the [Contact Us](#) section for any non-product compliance questions.

Search Parts in this Series

[171692Series](#)

Mates With

Mega-Fit® Header [76825](#) , [76829](#) , [172064](#) , [172065](#)

Use With

Mega-Fit® Crimp Terminals, [172063](#)