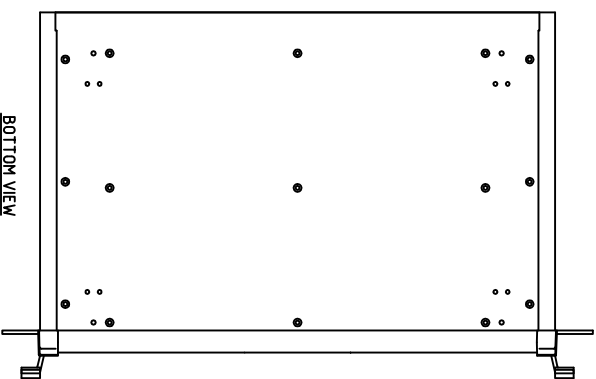
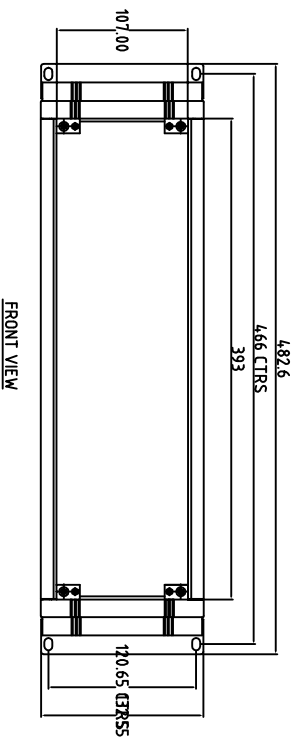


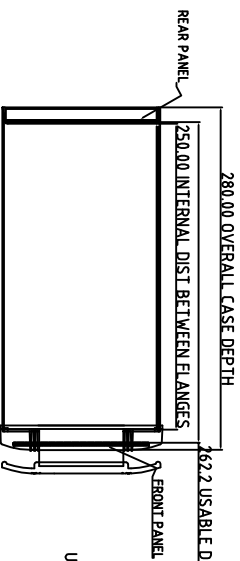
FIRST ANGLE PROJECTION



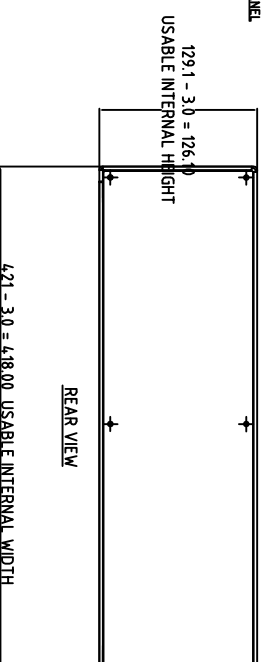
BOTTOM VIEW



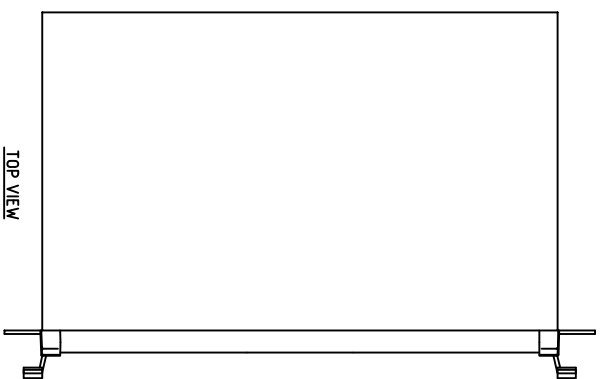
FRONT VIEW



SIDE VIEW



REAR VIEW



TOP VIEW

3U x 280MM UNIMET RACK CASE
 FRONT BEZEL: POWDER COATED RAL 7040
 REAR SHELL ASSEMBLY POWDER COATED RAL 7035
 REAR RECESS OF BEZEL & FRONT MATING FLANGE OF SHELL TO BE MASKED
 MATERIAL: CASE BODY & REAR PANEL - 150mm AL

Modifications

Iss
1

Tolerances unless otherwise stated:
 General tolerances ±0.20
 Resultant tolerances between hole centers ±0.15
 Tolerances on hole diameters ±0.05
 Angles ± 0.5°
 Surface finish 32/

Required Finish:
 Scale: 1:2

Drawn by: Ian Cox
 Checked By:

ALL DIMENSIONS IN MILLIMETRES
 Drawing Number: M5619325

Date drawn: April '12

Material Spec: DO NOT SCALE



METCASE ENCLOSURES
 15 Brunel Way,
 Segensworth East, Fareham,
 Hampshire, PO15 5TX, UK.

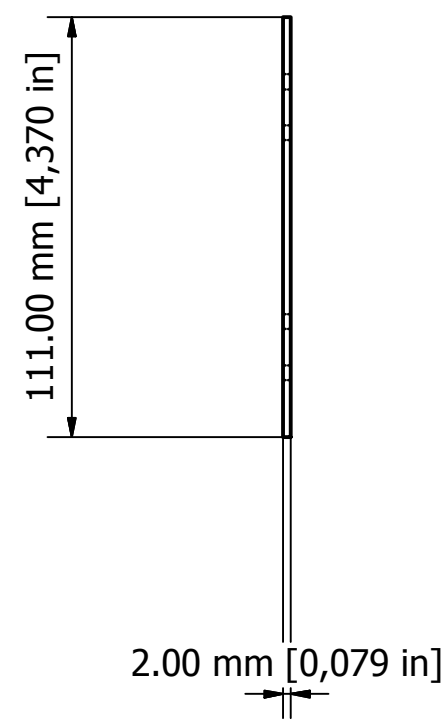
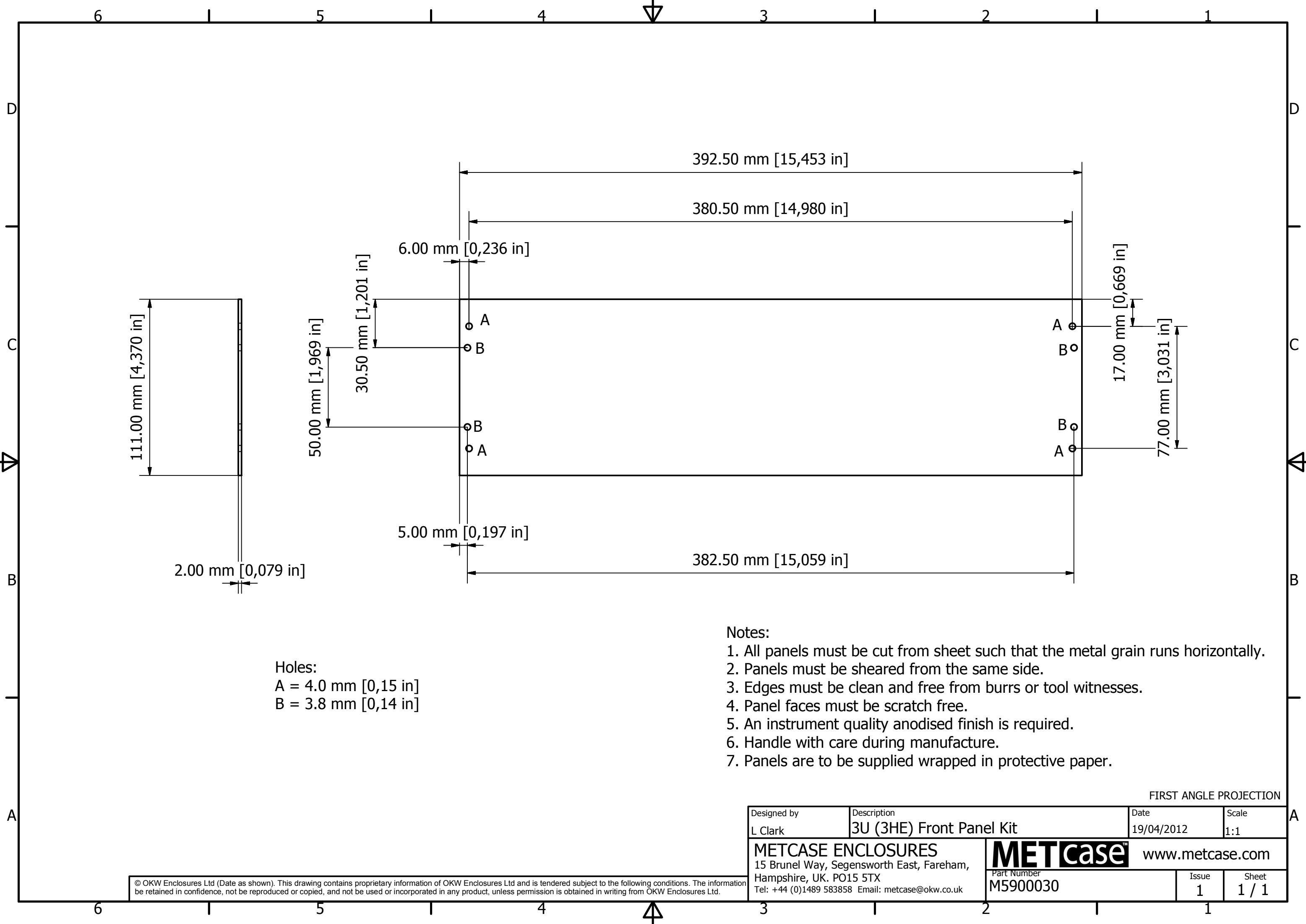
Part Name: 19" x 3U (3HE) x 280 dp
 Part Number: M5619325

Sheet 1 of 1

www.metcase.com

OKW ENCLOSURES LTD (DATE AS SHOWN). THIS DRAWING CONTAINS PROPRIETARY INFORMATION OF OKW ENCLOSURES LTD AND IS TENDERED SUBJECT TO THE FOLLOWING CONDITIONS: THE INFORMATION BE RETAINED IN CONFIDENCE, NOT BE REPRODUCED OR COPIED, AND NOT BE USED OR INCORPORATED IN ANY PRODUCT, UNLESS PERMISSION IS OBTAINED IN WRITING FROM OKW ENCLOSURES LTD.

A0



Holes:
 A = 4.0 mm [0,15 in]
 B = 3.8 mm [0,14 in]

- Notes:
1. All panels must be cut from sheet such that the metal grain runs horizontally.
 2. Panels must be sheared from the same side.
 3. Edges must be clean and free from burrs or tool witnesses.
 4. Panel faces must be scratch free.
 5. An instrument quality anodised finish is required.
 6. Handle with care during manufacture.
 7. Panels are to be supplied wrapped in protective paper.

FIRST ANGLE PROJECTION

Designed by L Clark	Description 3U (3HE) Front Panel Kit	Date 19/04/2012	Scale 1:1
METCASE ENCLOSURES 15 Brunel Way, Segensworth East, Fareham, Hampshire, UK. PO15 5TX Tel: +44 (0)1489 583858 Email: metcase@okw.co.uk		METcase™ www.metcase.com Part Number M5900030	
		Issue 1	Sheet 1 / 1