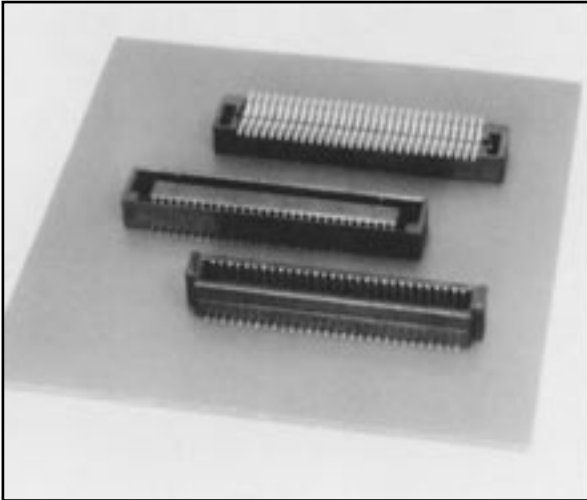


KX14/15 SERIES CONNECTORS

0.8mm (.031") Contact Spacing, PCB-to-PCB SMT Connectors



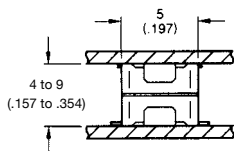
The KX14/15 Series connectors are low profile, SMT type connectors for PCB-to-PCB applications. Contact spacing is 0.8mm (.031"). The receptacle (KX14) and plug (KX15) combination offer variable stacking heights of 4 to 9mm (.157 to .354").

These connectors are ideal for use in the personal computer industry where space, weight and high density are critical factors.

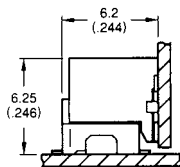
FEATURES

- 0.8mm (.031") contact spacing
- Straight receptacle (KX14) and right angle/straight plug (KX15) for parallel and vertical PCB connections
- 4 to 9mm (.157 to .354") stacking heights
- Polarization key prevents mismatching
- Resistant to vibration and twisting
- Available in embossed tape for automatic mounting

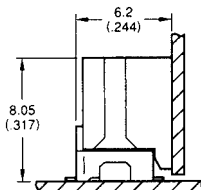
Connector Profile (Ref.)



Hold-down type (Right-angle side)



Screw type (Right-angle side)



GENERAL SPECIFICATIONS

Number of Contacts	Straight: 20, 30, 40, 50, 60, 70, 80, 100, 1200, 140, 160 Right Angle: 20, 30, 40, 50, 60, 70, 80, 140
Contact Spacing	0.8mm (.031") Double Row
Current Rating	0.5 Amp per contact
Dielectric Withstanding Voltage	500 VAC r.m.s. (for one minute)
Insulation Resistance	100 megohms min.
Contact Resistance	70 milliohms max.
Operating Temperature	-40°C to +85°C
Voltage Rating	AC 200V, DC 300V

Note 1: Please consult JAE for availability

MATERIALS AND FINISHES*

Description	Materials/Finishes	
Insulator	KX14	Glass-filled LCP (UL94V-0 Black)
	KX15 Straight	Glass-filled PPS (UL94V-0 Black)
	KX15 Right Angle	Glass-filled LCP (UL94V-0 Black)
Contact	Copper Alloy Connecting Area: 0.1µm (.000004") min. Gold Plating Over Nickel Terminal Area: Gold flash over Nickel or Tin-Lead over Nickel	
Hold Down	Copper Alloy/Tin-Lead over Nickel	
Hook Pin	Copper Alloy/Tin plating	
Hexagon Nut	Brass/Nickel plating	

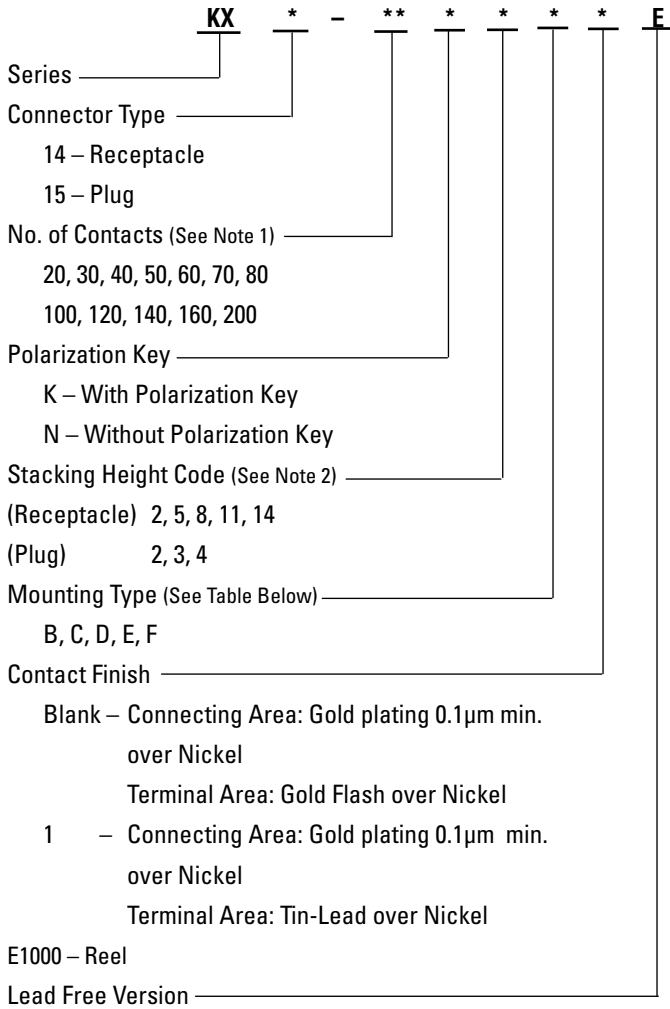
*Please contact JAE for lead-free product availability.

KX14/15 SERIES CONNECTORS

0.8mm (.031") Contact Spacing, PCB-to-PCB SMT Connectors

ORDERING INFORMATION

• Straight



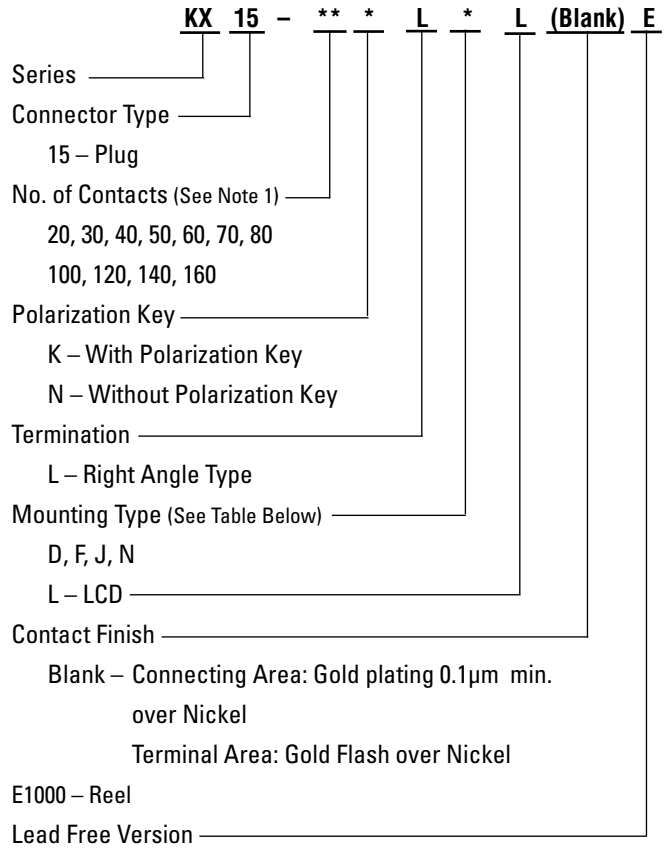
Note 1: Please consult JAE for availability.
 Note 2: Stacking Height = Stacking Height Code of KX14 & Stacking Height Code of KX15.

Mounting Type for Straight

	Positioning Key	Hold Down	Flange	Hook Pin
B	○	-	-	-
C	○	-	○	○
D	○	○	○	-
E	○	-	○	-
F	-	○	○	-

Note 1: Please consult JAE for availability.

• Right Angle



Mounting Type for Right Angle

	Positioning Key	Hold Down	Nut
D	○	○	-
F	-	○	-
J	○	-	-
N	○	-	○

Stacking Height (Parallel PCB to PCB connection)

	Plug			
	Stacking Height Code	2	3	4
Receptacle	2	4 (.157)	5 (.197)	6 (.236)
	5	7 (.276)	8 (.315)	9 (.354)
	8	10 (.394)	11 (.433)	12 (.472)
	11	13 (.512)	14 (.551)	15 (.591)
	14	16 (.630)	17 (.669)	18 (.709)