



Ideal for OEM light-fixture manufacturers, Molex LED Array Holders feature a one-piece, clean design and simplify the installation process for next-generation, energy-efficient CREE* XLamp† CXA1507 and CXA1512 arrays by eliminating hand soldering

LED technology has been proven to reduce the amount of energy consumed and is becoming a more reliable, efficient and user-friendly way for accommodating general illumination requirements. Using unmatched interconnect technology, Molex provides a solderless solution to mounting LED arrays into OEM fixtures.

LED array holders simplify the LED installation process by eliminating the need for hand or SMT soldering and expensive SMT equipment. The holders allow customers to install LED arrays quickly into fixtures, enable field replacements and facilitate upgrades to current applications.

Additional LED array holders for CREE* XLamp† CXA25 arrays will be released in the near future.

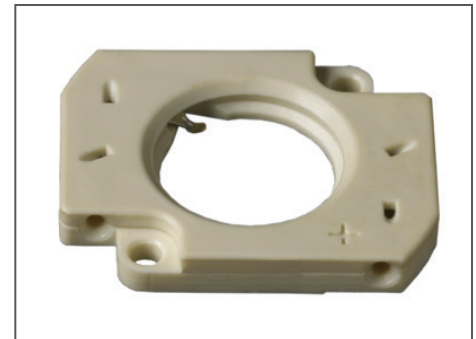
For information about additional Solid State Lighting (SSL) products visit: www.molex.com/industry/solidstatelighting.html

Features and Benefits

Flat surface on the top of the LED array holder with integrated bevel Light Emitting Source (LES)	Allows for easy addition of secondary optics. Provides electrical and thermal connection without interrupting light output or beam angle. Offers a clean and finished appearance
4.10mm low profile design	Fits many applications
Compression contacts array to power	Ensure stable connection in high-ambient temperature. Simplifies the LED installation process by eliminating hand soldering or expensive Surface Mount Technology (SMT) equipment. Reduces installation time
Double-ended wire-trap terminal to attach power source	Allows for wiring serial or parallel LED sequences, ensuring ease of array assembly
Screw-mount attachment method for securing array to heat sink	Provides voltage isolation between LED and heat sink with external mounting holes
Releasable wire trap for rework or replacement	Allows for field serviceability
High-temperature thermoplastic housing	Supports high heat-generating environments

LED Array Holder for CREE* XLamp† CXA1507 and CXA1512 Arrays

180560 LED Array Holder for CREE* XLamp† CXA1507 and CXA1512 Arrays



LED Array Holder for CREE* XLamp† CXA1507 and CXA1512 (Series 180560)

† CREE and XLamp† are registered trademarks of Cree, Inc.

Specifications

Reference Information

Packaging: Tray
 UL File No.: Pending
 CSA File No.: Pending
 Designed In: Millimeters
 RoHS: Yes
 REACH SVHC: Contains SVHC: No

Electrical

Voltage (max.): 600V DC
 Current (max.):
 2.5A continuous; 3.5A max.
 Contact Resistance:
 20 milliohms max.
 Dielectric Withstanding Voltage:
 300V DC
 Insulation Resistance:
 5000 Megohms min.

Mechanical

Wire Insertion Force: 5N max.
 Wire Pull Out Force: 30N max.
 Durability (min.): 5 Cycles

Physical

Housing:
 PA66 Nylon 25% Glass fill UL94V-0
 Contact:
 Copper Alloy(Cu), Nickel (Ni)
 and Gold (Au)
 Plating:
 Contact Area — Gold (Au)
 Underplating — Nickel (Ni)

Applications

All general illumination applications

- Downlighting
- Track
- Pendants
- Linear

Areal Lighting

- Roadways
- Parking Lots
- Wall Packs



Recessed downlighting in residential and commercial buildings



Ordering Information

Order No.	Description	Installation	Wire Attach Method
180560-0001	LED Array Holder for CREE® XLamp™ CXA1507 and CXA1512 LED Arrays	(2) M2.5 Screw Mounting	Poke-In Releasable Wire Trap

*† CREE® and XLamp™ are registered trademarks of Cree, Inc.