

ST 2000/69/23*

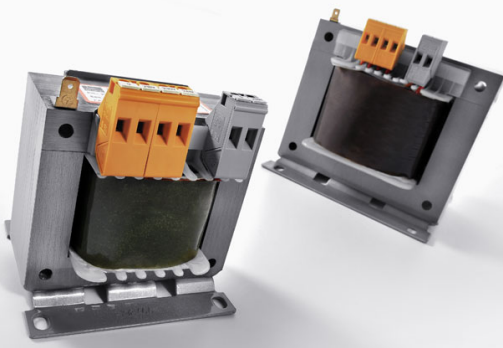
Control-, safety isolating- and isolating transformer

- Screw type terminals
- Compact design
- Screw mounting

Low inrush current control, safety isolating and isolating transformer to IEC 61558-2-2; 2-4, DIN EN 61558-2-2; 2-4, VDE 0570 part 2-2; 2-4; 2-6, UL 506, CSA 22.2

C-UL-US, CSA 22.2 and ENEC 10 (VDE) Approvals

*without C-UL-US Approval



ST 2000/69/23*

Control-, safety isolating- and isolating transformer



Input data

Input voltage	690 V
Tappings Input (\pm)	20 V
Frequency range	50 - 60 Hz

Output data

Output voltage	230 V
No-load voltage (ca. x factor)	1.03
Efficiency	96 %
Power VDE (DB $\cos \phi=1$)	2000 VA
Power VDE (KB $\cos \phi=0.5$)	10900 VA
Power UL	1750 VA

Standards and security

Approvals	C-UL-US, ENEC 10 (VDE)
Protection index	IP 00
Safety class (prepared)	I
Cooling method	by self-cooling
Ambient temperature max.	40 °C
Class of Insulation System	VDE=B, UL=130
Test voltage	min. 2500 V, 50 Hz

Mechanical data

Type	open type
Terminals	screw-type terminals, PE 6,3 x 0,8
Fixing method	Mounting brackets
Fixing screws	M8
Weight	22.00 kg

Order numbers

Order Number	ST 2000/69/23*
--------------	----------------

BLOCK Transformatoren-Elektronik GmbH

Max-Planck-Straße 36-46

27283 Verden

Germany

Phone +49 4231 678-0

Fax +49 4231 678-177