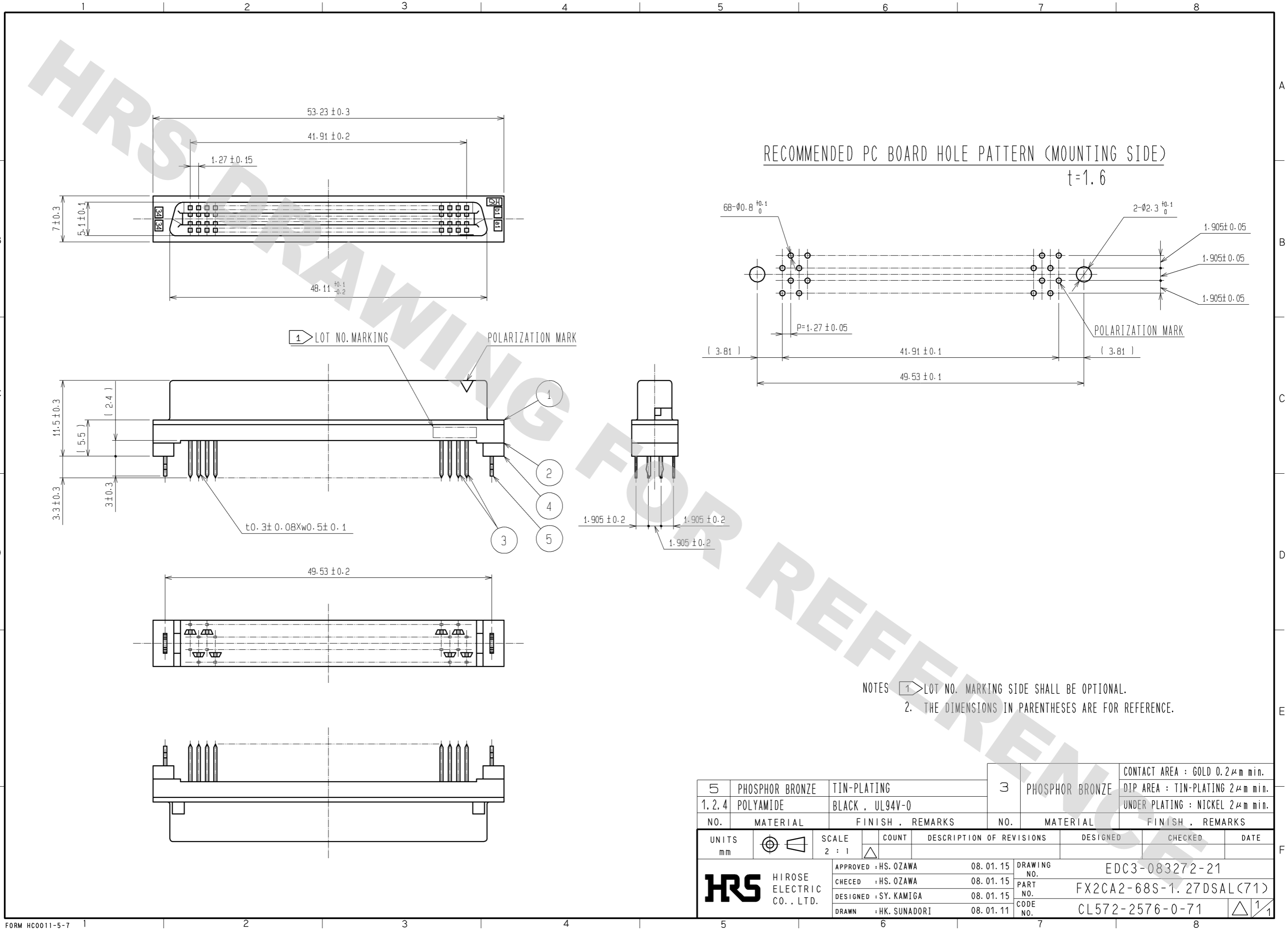


DRAWING FOR REFERENCE: This is subject to change without notice
08/11/2012



NOTES
 1. LOT NO. MARKING SIDE SHALL BE OPTIONAL.
 2. THE DIMENSIONS IN PARENTHESES ARE FOR REFERENCE.

5	PHOSPHOR BRONZE	TIN-PLATING	3	PHOSPHOR BRONZE	CONTACT AREA : GOLD $0.2 \mu\text{m}$ min. DIP AREA : TIN-PLATING $2 \mu\text{m}$ min. UNDER PLATING : NICKEL $2 \mu\text{m}$ min.		
1, 2, 4	POLYAMIDE	BLACK , UL94V-0					
NO.	MATERIAL	FINISH , REMARKS	NO.	MATERIAL	FINISH , REMARKS		
UNITS		SCALE	COUNT	DESCRIPTION OF REVISIONS	DESIGNED	CHECKED	DATE
mm		2 : 1	Δ				
HRS HIROSE ELECTRIC CO., LTD.		APPROVED : HS. OZAWA	08. 01. 15	DRAWING NO. EDC3-083272-21			
		CHECED : HS. OZAWA	08. 01. 15	PART NO. FX2CA2-68S-1. 27DSAL(71)			
		DESIGNED : SY. KAMIGA	08. 01. 15	CODE NO. CL572-2576-0-71			
		DRAWN : HK. SUNADORI	08. 01. 11				