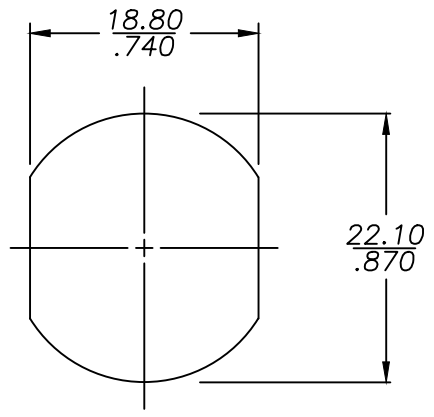
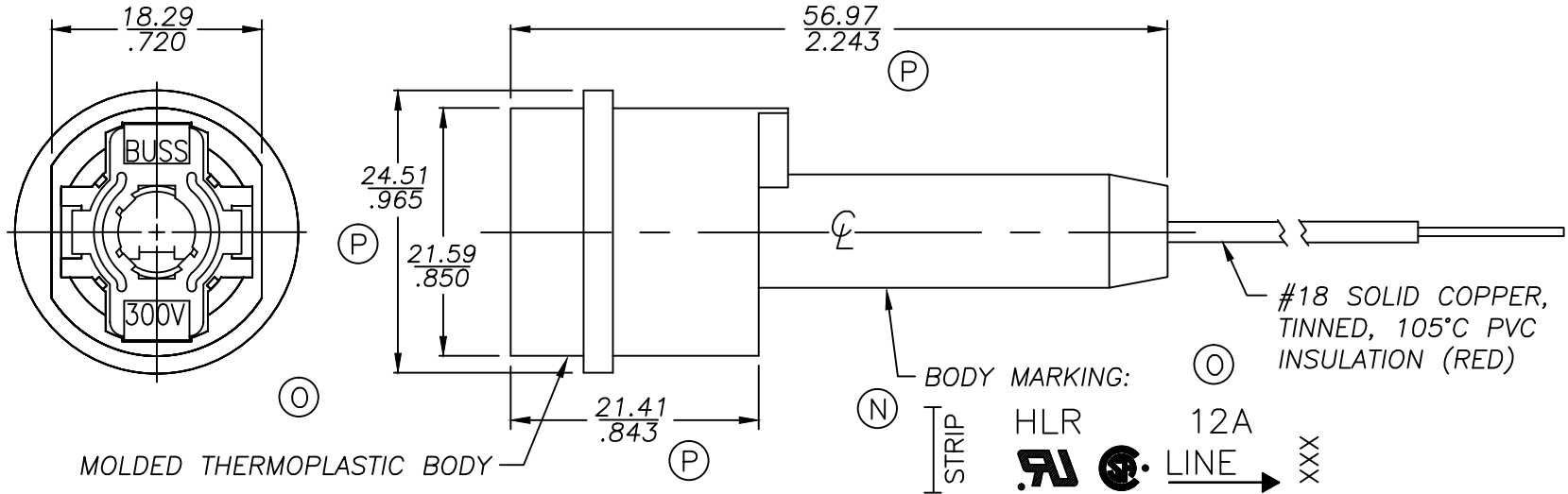
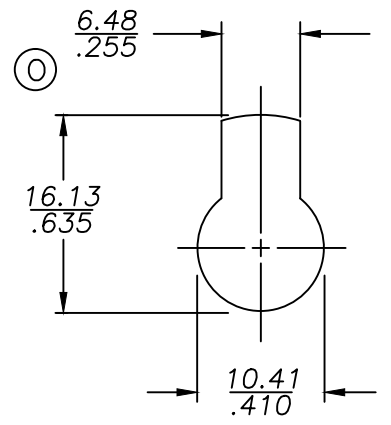


CONFIDENTIAL. THE INFORMATION CONTAINED IN THIS DOCUMENT IS THE PROPERTY OF COOPER INDUSTRIES, INC. IT IS NOT FOR PUBLIC DISCLOSURE. POSSESSION OF THE INFORMATION DOES NOT CONVEY ANY RIGHT TO LOAN, SELL OR DISCLOSE THE INFORMATION. UNAUTHORIZED REPRODUCTION OR USE OF THE INFORMATION IS PROHIBITED. THIS DOCUMENT IS TO BE RETURNED TO COOPER INDUSTRIES, INC. UPON COMPLETION OF THE PURPOSE FOR WHICH IT IS LOANED OR UPON REQUEST.

COPYRIGHT Cooper Industries, Inc. The disclosure of this work is limited to select personnel. Further dissemination or disclosure to the public is PROHIBITED. This unpublished work is protected by Federal Copyright law and all rights thereunder are reserved by Cooper Industries, Inc.



KNOCKOUT HOLE



KEYHOLE PUNCH

NOTE: IF DESIRED, MOUNTING CLIP AVAILABLE.

- FOR KNOCKOUT HOLE: #BK/A-104.
- FOR KEYHOLE PUNCH HOLE: #6374 ($\frac{1.09}{.043} - \frac{1.58}{.062}$ PANEL THICKNESS) AND #4909 ($\frac{.76}{.030} - \frac{1.07}{.042}$ PANEL THICKNESS).

SCALE	1 1/2 X	UNLESS OTHERWISE SPECIFIED TOLERANCES TO BE:
		METRIC ±.13mm
		INCHES ±.005"
		ANGULAR ±2°
PAGE 1 OF 2		

(M) REVISED & REDRAWN
 METRIC (mm) INCHES

DATE	1-17-01	NO.	HLR
TITLE	FUSEHOLDER		
SUP. NO.	HLR	DATED	10-21-98
DWG.	JG	CK.	
ENG.		CHANGE	P
			NO1008
COOPER Bussmann			
St. Louis, MO 63178			
DISTRIBUTION	40871	56	N

(CUSTOMER PRINT)

