

Datasheet

Sensor Holder



Specifications

- Material

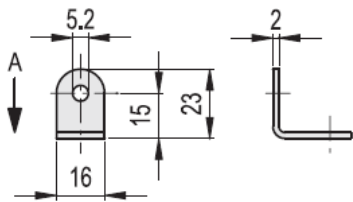
Sandblasted AISI 304 stainless steel, matte finish

Features and applications

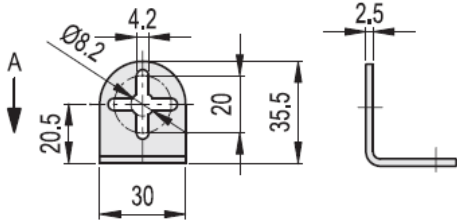
In MSM-LA-30 sensor holders, the cross-shaped hole provides a more precise regulation for fixing to MSM-F connecting clamps and it also allows the use of two clamping screws.

**Professionally approved products.
Datasheet**

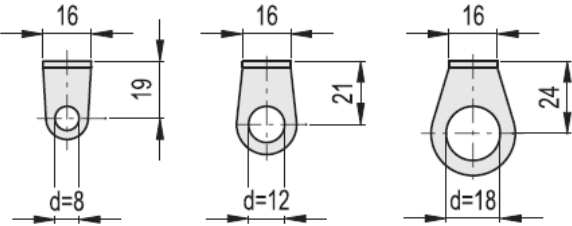
MSM-LA-16



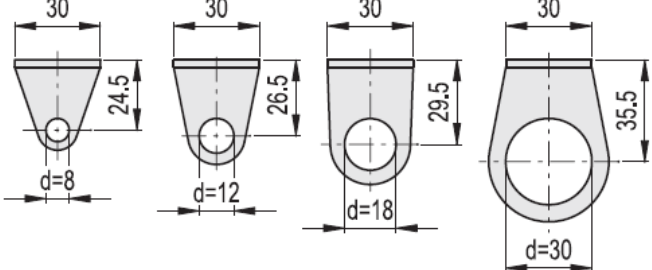
MSM-LA-30



View on A



View on A



| Main Dimensions | |
|-----------------|----|
| Stock No. | d1 |
| 7866185 | 8 |
| 7866197 | 12 |
| 7866201 | 18 |
| 7866194 | 8 |
| 7866191 | 12 |
| 7866204 | 18 |
| 7866208 | 30 |