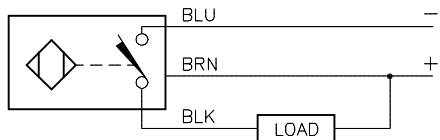


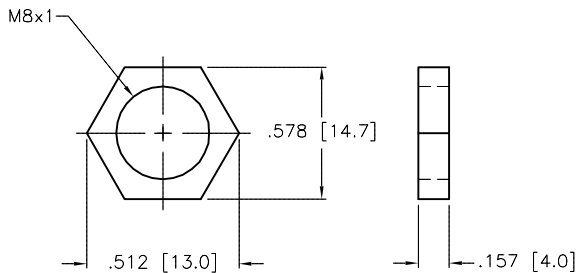
WIRING DIAGRAM



OUTPUT: AN7X

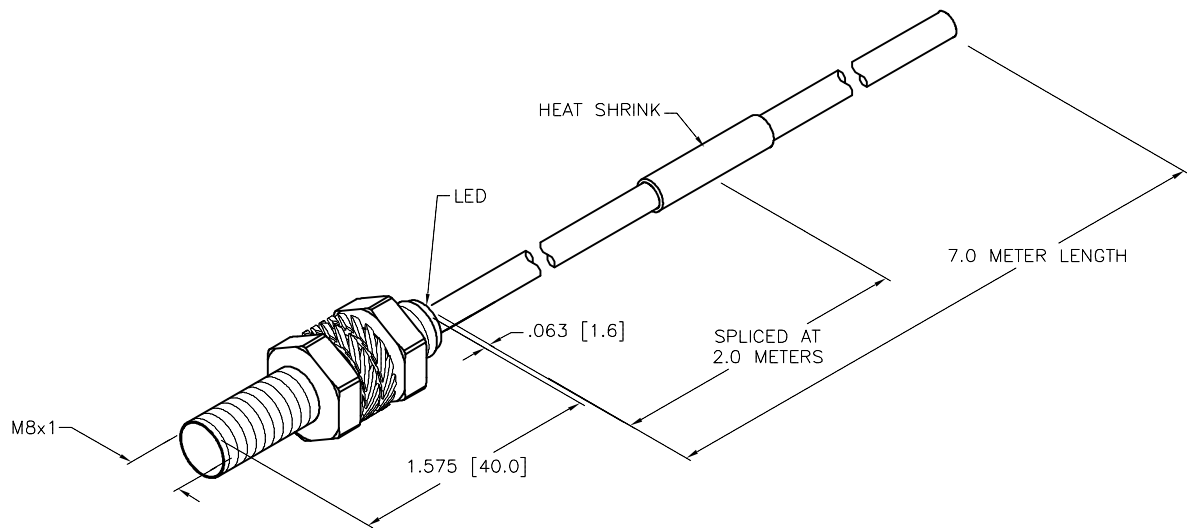
NO SHORT-CIRCUIT OR OVERLOAD PROTECTED

LOCKNUT LN-M08



SPECIFICATIONS

|                             |                                  |
|-----------------------------|----------------------------------|
| RATED OPERATING DISTANCE    | 1.5mm [059]                      |
| MOUNTING MODE               | FLUSH                            |
| TEMPERATURE DRIFT           | ≤±10%                            |
| HYSTERESIS                  | 3-15%                            |
| MIN. REPEAT ACCURACY        | ≤2%                              |
| OPERATING TEMPERATURE       | -25°C to +70°C (-13°F to +158°F) |
| RATED OPERATIONAL VOLTAGE   | 10-30 VDC                        |
| RESIDUAL RIPPLE             | ≤10%                             |
| RATED OPERATIONAL CURRENT   | ≤150 mA                          |
| NO-LOAD CURRENT             | ≤15 mA                           |
| RESIDUAL CURRENT            | ≤0.1 mA                          |
| RATED INSULATION VOLTAGE    | ≤0.5 kV                          |
| SHORT-CIRCUIT PROTECTION    | NO                               |
| MAX. VOLTAGE DROP           | ≤1.8 V                           |
| WIRE BREAKAGE PROTECTION    | INCORPORATED                     |
| REVERSE POLARITY PROTECTION | INCORPORATED                     |
| OUTPUT FUNCTION             | 3-WIRE, NORMALLY OPEN, NPN       |
| MAX. SWITCHING FREQUENCY    | ≤3 kHz                           |
| HOUSING MATERIAL            | BRASS/CHROME-PLATED              |
| ACTIVE FACE                 | PLASTIC, PLASTIC, PA12-GF20      |
| END CAP                     | PLASTIC, PP                      |
| CABLE                       | ∅4.0, TPU                        |
| VIBRATION RESISTANCE        | 55 Hz (IN ALL 3 PLANES)          |
| SHOCK RESISTANCE            | 30 g, 11 ms                      |
| DEGREE OF PROTECTION        | IP 67                            |
| SWITCHING STATUS INDICATION | LED, YELLOW                      |



SOURCE DRAWING - FOR REFERENCE ONLY

|   |                           |  |   |   |                                |          |
|---|---------------------------|--|---|---|--------------------------------|----------|
| RELATED DOCUMENTS<br>1.<br>2.<br>3.<br>4. | 3RD ANGLE PROJECTION<br>  | THIS DRAWING IS CONFIDENTIAL AND THE PROPERTY OF TURCK INC. USE OF THIS DOCUMENT WITHOUT WRITTEN PERMISSION IS PROHIBITED. |   | 3000 CAMPUS DRIVE<br>MINNEAPOLIS, MN 55441<br>1-800-544-7769<br>(763) 553-7300<br>(763) 553-0708 fax<br>turck.com |                                |          |
|   | MATERIAL                  | DRFT RDS<br>APVD A.F.  | DATE 01/18/13<br>SCALE 1=1.0                      | DESCRIPTION<br>BI 1.5-G08-AN7X 7M SPLICED   |                                |          |
|   | FINISH                    | ALL DIMENSIONS DISPLAYED ON THIS DRAWING ARE FOR REFERENCE ONLY<br>CONTACT TURCK FOR MORE INFORMATION                      | UNIT OF MEASUREMENT<br><b>INCH [ MILLIMETER ]</b> |   | IDENTIFICATION NO.<br>S4701192 | REV<br>B |
|   | DO NOT SCALE THIS DRAWING |  | FILE: S4701192                                    | SHEET 1 OF 1  |                                |          |

|     |                                       |     |          |         |
|-----|---------------------------------------|-----|----------|---------|
| B   | UPDATE TO NO SHORT CIRCUIT PROTECTION | KMY | 11/06/13 | 43910   |
| REV | DESCRIPTION                           | BY  | DATE     | ECO NO. |