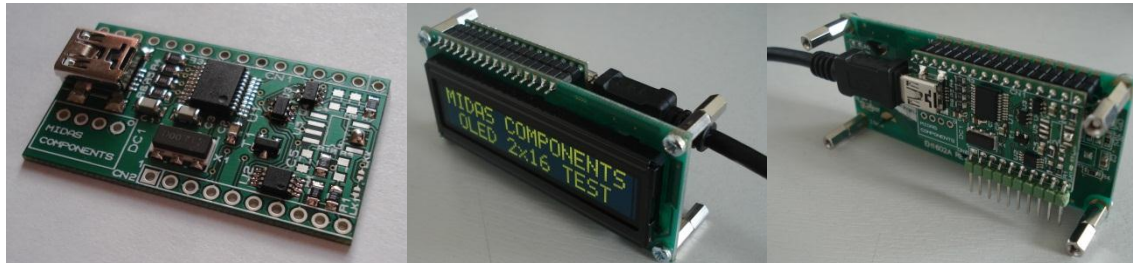


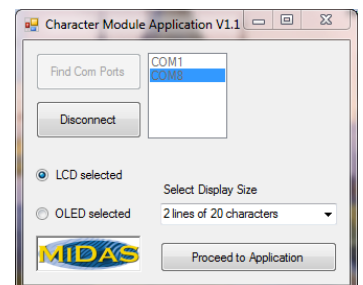
MCCMDB-16SIL

LCD / OLED Character display interface board with USB connection



Features:

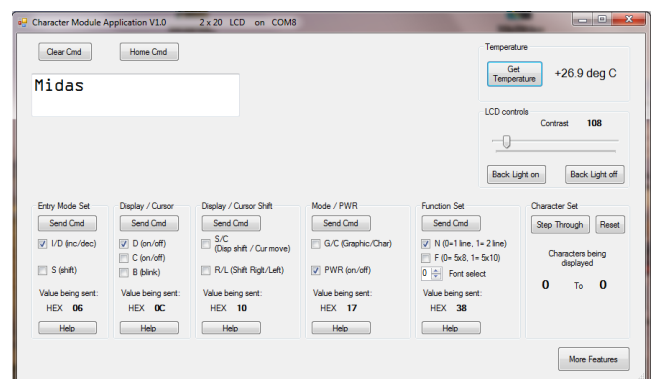
- Pin compatible with OLED / LCD 16 pin single in line (SIL) connectors.
- Powered form USB port or separate 5V supply.
- On board temperature measurement.
- On board digital LCD contrast voltage adjustment.
- On board digital LED backlight switch.
- On board LED backlight current limiting resistors.
- Re-programmable via USB port or directly using Microchip ICSP.
- Two general purpose Input Output (IO) ports.
- Windows application for display evaluation.
- Dimensions: 41.0 mm x 23.5 mm



Connections:

CN1 16PIN 0.1" PITCH SIL.	Symbol	Description
1	VSS	Supply 0 volts
2	VDD	Supply +5 volts
3	VO	LCD contrast adjustment voltage
4	RS	RS=0 Command. RS=1 Data
5	R/#W	R/#W=0 Write, R/#W=1 Read
6	E	Enable
7	D0	Data 0
8	D1	Data 1
9	D2	Data 2
10	D3	Data 3
11	D4	Data 4
12	D5	Data 5
13	D6	Data 6
14	D7	Data 7
15	LED+	Switched to +5v via T1 (FET) and R5
16	LED-	Connected to VSS via R6

CN3 Micro USB.	Symbol	Description
1	VDD	Supply +5 volts
2	D-	USB-
3	D+	USB+
4	NC	Not Connected
5,6,7,8,9	VSS	Supply 0 volts



CN2 10PIN 0.1" PITCH SIL.	Symbol	Description
1	VPP	RA3/#MCLR/VPP
2	VDD	Supply +5 volts
3	VSS	Supply 0 volts
4	D+	RA0/D+/PGD
5	D-	RA1/D-/PGC
6	NC	Not Connected
7	IO1	General IO bit 1
8	IO2	General IO bit 2
9	VSS	Supply 0 volts
10	BOOT	Set low for boot mode