

CRITCHLEY 9002VF

ISSUE C - 23/03/98

Critchley Components Limited

PO Box 246

Queens Drive Industrial Estate

Nottingham NG2 1NQ

United Kingdom

Tel: +44 (0) 115 986 1126

Fax: +44 (0) 115 986 0563

A compact encapsulated line isolating transformer, BABT, UL and BSi certified. Tested and approved in accordance with the requirements of EN41003: 1997, EN60950: 1992 (IEC950), EN60065: 1994 and AS/NZS 3260:1993 (BSi Certificate Nos. 7082 and 7456), UL1459, UL1950 and CAN/CSA 234-M90 (E171368 [M]).

ELECTRICAL SPECIFICATION

DC Resistance:
 Primary 70.4Ω ± 15%
 Secondary 70.4Ω ± 15%

Series O/C Inductance:
 measured @ 250mV
 200Hz >5.5H
 2000Hz >1.5H
 4000Hz >1.0H

Series O/C AC Resistance:
 measured @ 250mV
 200Hz >3KΩ
 2000Hz >21KΩ
 4000Hz >32KΩ

Leakage Inductance:
 200Hz - 4000Hz 18mH max.

Harmonic Distortion:
 200Hz, -3dBm on primary, 2f: -77dB max.
 3f: -75dB max.
 600Ω load on secondary, TDdBm: -75dBm max.

Insertion Loss:
 200Hz - 4000Hz 1.5dB max.
 (600Ω ref., 600Ω load)

Frequency Response:
 200Hz - 4000Hz ± 0.4dB max.
 (600Ω ref., 600Ω load)

Return Loss:
 300Hz - 4000Hz >22dB (when using recommended circuit).

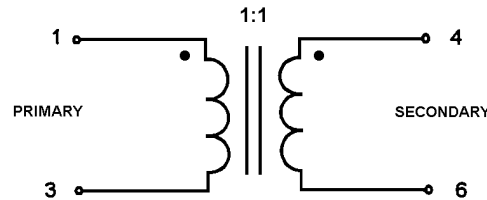
Max. DC current 0mA

ENVIRONMENTAL & SAFETY SPECIFICATION

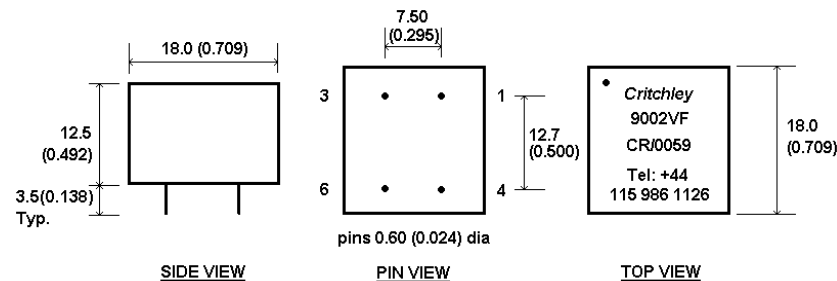
Voltage Breakdown: Tested according to EN60950 part 5.3.2. (test voltage: 3000 Volts).

Storage temperature: Tested to IEC 68-2-14:1984 test procedure Nb. (temperature range -25°C to +85°C).

CIRCUIT SCHEMATIC



MECHANICAL SPECIFICATION



Dimensions in mm (inches) tolerance ± 0.25 (0.01)

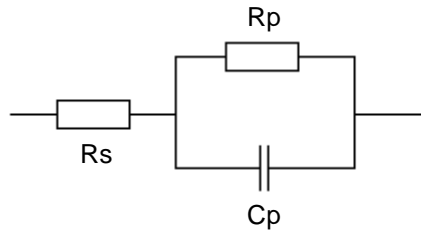


As this product is covered by a BABT Certificate of Recognition (CR0059) approvals time will be reduced.

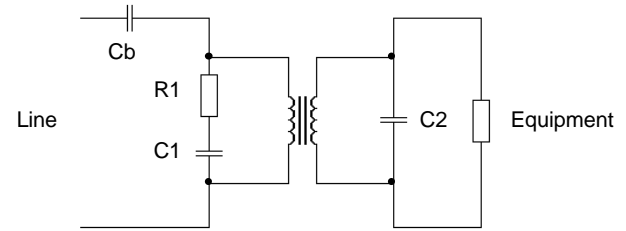


Application Circuits

Reference Impedance (ETS300 001):



Circuit description:



Country	Ref. Impedance Values			Recommended Circuit Values				
	R_s (Ω)	R_p (Ω)	C_p (nF)	C_b (μF)	R_1 (Ω)	C_1 (nF)	C_2 (nF)	Equipment (Ω)
UK, New Zealand	370	620	310	3.3	*523	100	22	*909
Germany, Switzerland	220	820	115	2.2	150	68	22	910
Australia	220	820	120	2.2	330	68	22	910
Sweden, Pan European (TBR 21)	270	750	150	3.3	220	100	-	910
Norway	120	820	110	3.3	150	100	-	910
Austria, Belgium, Canada, France, Finland, Hong Kong, Ireland, Italy, Japan, Netherlands, Portugal, Singapore, Taiwan, USA, Spain, Denmark	600 Ω			6.8	*590	22	33	*523

Notes: *E96 series resistor values.

Country reference networks are subject to change and interpretation. The above is intended as an initial reference and should you require more information for a network not shown please contact your local sales office. Software models are available on disk for all components.