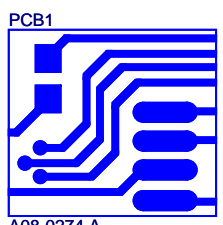
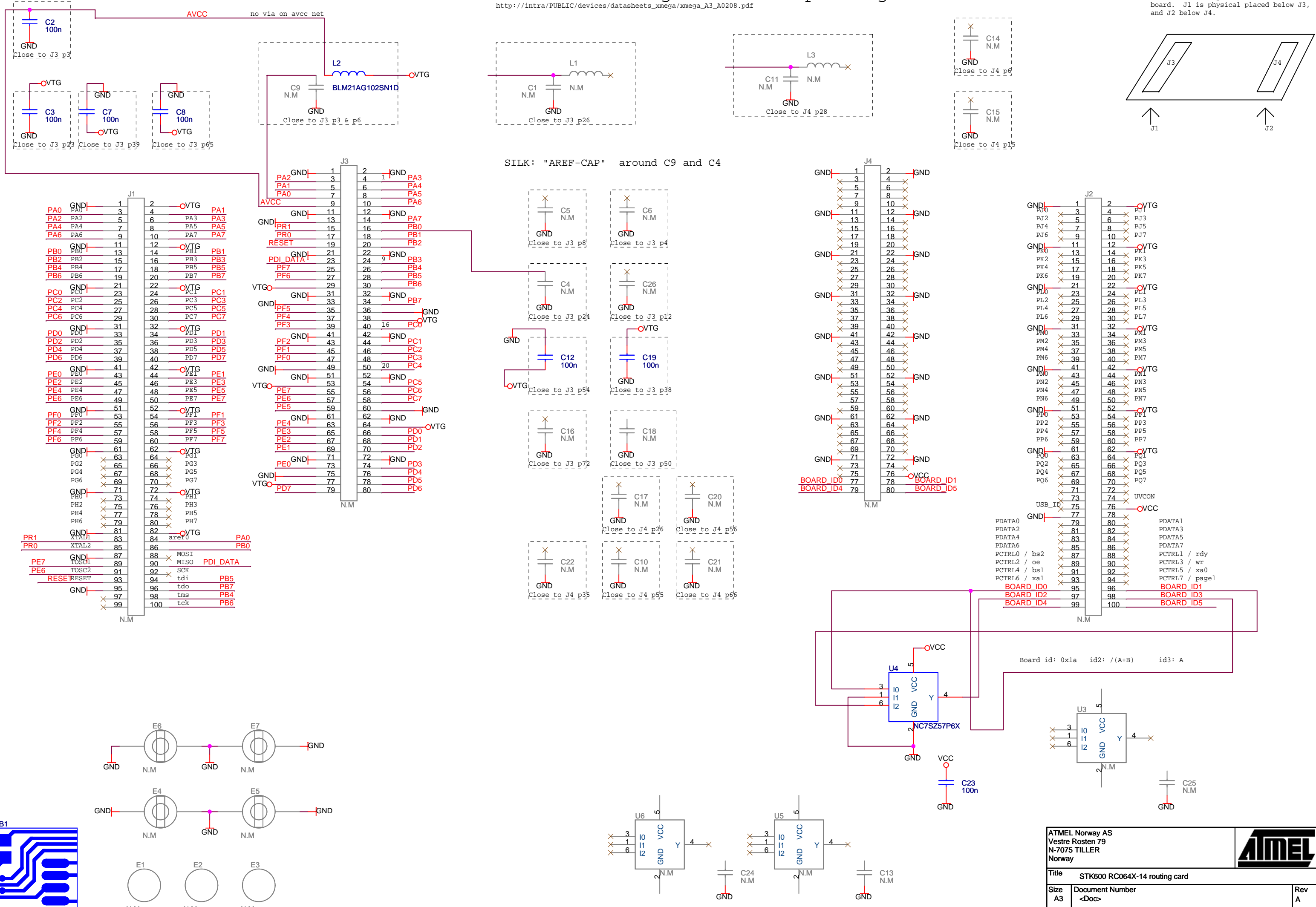


RC064X-14 Routing card for 64 pin XMEga

http://intra/PUBLIC/devices/datasheets_xmega/xmega_A3_A0208.pdf

J3 and J4 mates up to the socket card, while J1 and J2 goes down to the mother board. J1 is physical placed below J3, and J2 below J4.



ATMEL Norway AS Vestre Rosten 79 N-7075 TILLER Norway		
Title STK600 RC064X-14 routing card		
Size A3	Document Number <Doc>	Rev A
Date: Monday, March 31, 2008	Sheet 1 of 1	