

PCB terminal block - PTQ 0,3/ 2-2,5 THR R32 - 1702610

Please be informed that the data shown in this PDF Document is generated from our Online Catalog. Please find the complete data in the user's documentation. Our General Terms of Use for Downloads are valid (<http://download.phoenixcontact.com>)




PCB terminal block, Nominal current: 4 A, Nom. voltage: 160 V, Pitch: 2.5 mm, Number of positions: 2, Connection method: Insulation displacement connection QUICKON, Mounting: SMD/THT/THR, Conductor/PCB connection direction: 0 °, Color: black

Why buy this product

- Visual inspection of the conductor position possible
- Conductor connection without pretreatment
- 2.5 mm pitch
- THR solderable
- Taped as standard
- Supplied in tape-on-reel packing according to IEC 60286-3 for automated mounting
- Secure snap-on mechanism



Key commercial data

| | |
|--------------------------------------|---|
| Packing unit | 250 pc |
| Minimum order quantity | 250 pc |
| GTIN |  4 046356 599498 |
| Weight per Piece (excluding packing) | 2.22 g |
| Custom tariff number | 85369010 |
| Country of origin | Germany |

Technical data

Dimensions

| | |
|----------------|-----------|
| Length | 17.55 mm |
| Height | 8 mm |
| Width | 7 mm |
| Pitch | 2.5 mm |
| Dimension a | 2.5 mm |
| Pin dimensions | 0,9 x 0,4 |
| Pin spacing | 2.5 mm |
| Hole diameter | 1.1 mm |

PCB terminal block - PTQ 0,3/ 2-2,5 THR R32 - 1702610

Technical data

General

| | |
|---|----------------------|
| Range of articles | PTQ 0,3/...-THR |
| Insulating material group | IIIa |
| Rated surge voltage (III/3) | 2.5 kV |
| Rated surge voltage (III/2) | 2.5 kV |
| Rated surge voltage (II/2) | 2.5 kV |
| Rated voltage (III/3) | 160 V |
| Rated voltage (III/2) | 160 V |
| Rated voltage (II/2) | 200 V |
| Nominal current I _N | 4 A |
| Nominal cross section | 0.34 mm ² |
| Maximum load current | 4 A |
| Insulating material | LCP |
| Solder pin surface | Sn |
| Inflammability class according to UL 94 | V0 |
| Number of positions | 2 |

Connection data

| | |
|--|---|
| Conductor cross section solid min. | 0.14 mm ² |
| Conductor cross section solid max. | 0.34 mm ² |
| Conductor cross section stranded min. | 0.14 mm ² |
| Conductor cross section stranded max. | 0.34 mm ² |
| Conductor cross section AWG/kcmil min. | 26 |
| Conductor cross section AWG/kcmil max | 22 |
| Maximum AWG according to UL/CUL | 24 |
| Wire diameter incl. insulation | 1.6 mm (Terminal block is tested with PVC insulation - other insulation materials available on request) |

Classifications

eCl@ss

| | |
|------------|----------|
| eCl@ss 4.0 | 272607xx |
| eCl@ss 4.1 | 27141109 |
| eCl@ss 5.0 | 27141190 |
| eCl@ss 5.1 | 27141190 |
| eCl@ss 6.0 | 27261101 |
| eCl@ss 7.0 | 27440401 |
| eCl@ss 8.0 | 27440401 |

ETIM

| | |
|----------|----------|
| ETIM 4.0 | EC002643 |
| ETIM 5.0 | EC002643 |

PCB terminal block - PTQ 0,3/ 2-2,5 THR R32 - 1702610

Classifications

UNSPSC

| | |
|---------------|----------|
| UNSPSC 6.01 | 30211801 |
| UNSPSC 7.0901 | 39121432 |
| UNSPSC 11 | 34131203 |
| UNSPSC 12.01 | 39121432 |
| UNSPSC 13.2 | 39121432 |

Approvals

Approvals

Approvals

UL Recognized / VDE Gutachten mit Fertigungsüberwachung / cUL Recognized / CCA / IECCE CB Scheme / cULus Recognized

Ex Approvals

Approvals submitted

Approval details

| | |
|--------------------------------|-------|
| UL Recognized | |
| | B |
| mm ² /AWG/kcmil | 24 |
| Nominal current I _N | 2 A |
| Nominal voltage U _N | 150 V |

| | |
|---|-------|
| VDE Gutachten mit Fertigungsüberwachung | |
| | |
| Nominal current I _N | 4 A |
| Nominal voltage U _N | 130 V |

| | |
|----------------------------|----|
| cUL Recognized | |
| | B |
| mm ² /AWG/kcmil | 24 |

PCB terminal block - PTQ 0,3/ 2-2,5 THR R32 - 1702610

Approvals

| | |
|--------------------|-------|
| | B |
| Nominal current IN | 2 A |
| Nominal voltage UN | 150 V |

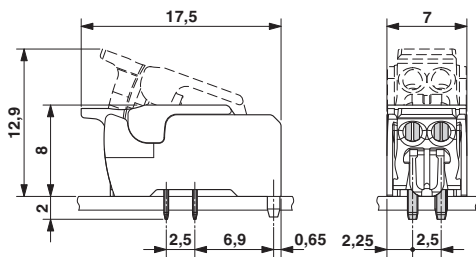
| | |
|----------------------------|---------|
| CCA | |
| mm ² /AWG/kcmil | 0.2-2.5 |
| Nominal current IN | 4 A |
| Nominal voltage UN | 130 V |

| | |
|----------------------------|---------|
| IECEE CB Scheme | |
| mm ² /AWG/kcmil | 0.2-2.5 |
| Nominal current IN | 4 A |
| Nominal voltage UN | 130 V |

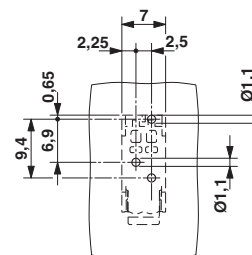
| | |
|------------------|--|
| cULus Recognized | |
|------------------|--|

Drawings

Dimensioned drawing

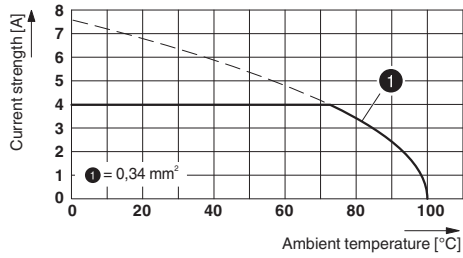


Drilling diagram



PCB terminal block - PTQ 0,3/ 2-2,5 THR R32 - 1702610

Diagram



Type: PTQ 0,3/...-2,5(-L) THR R32

Dimensioned drawing

