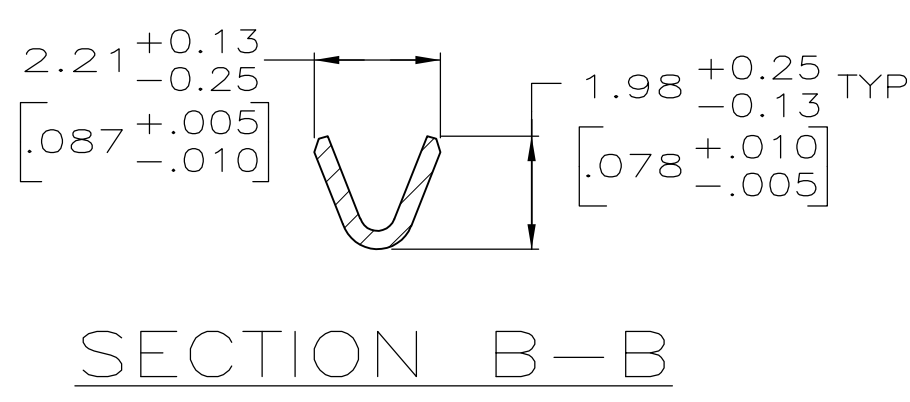
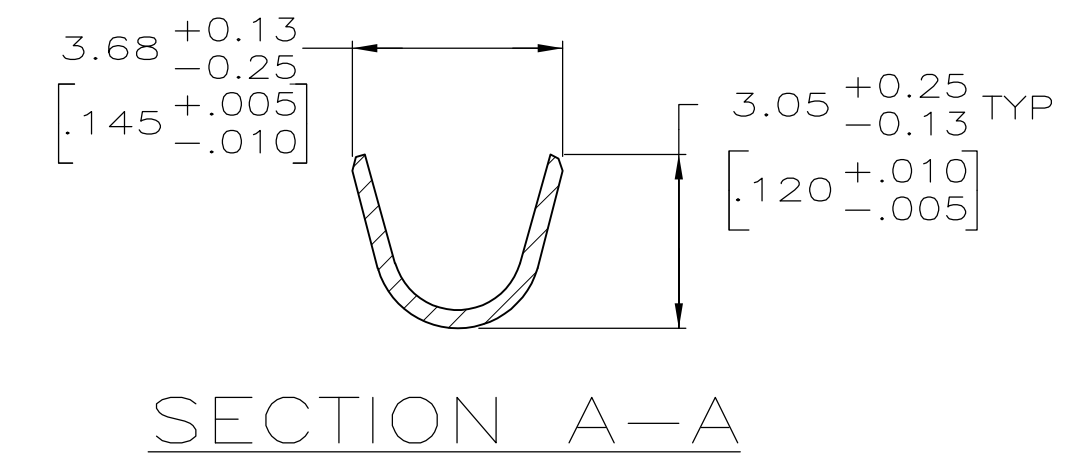
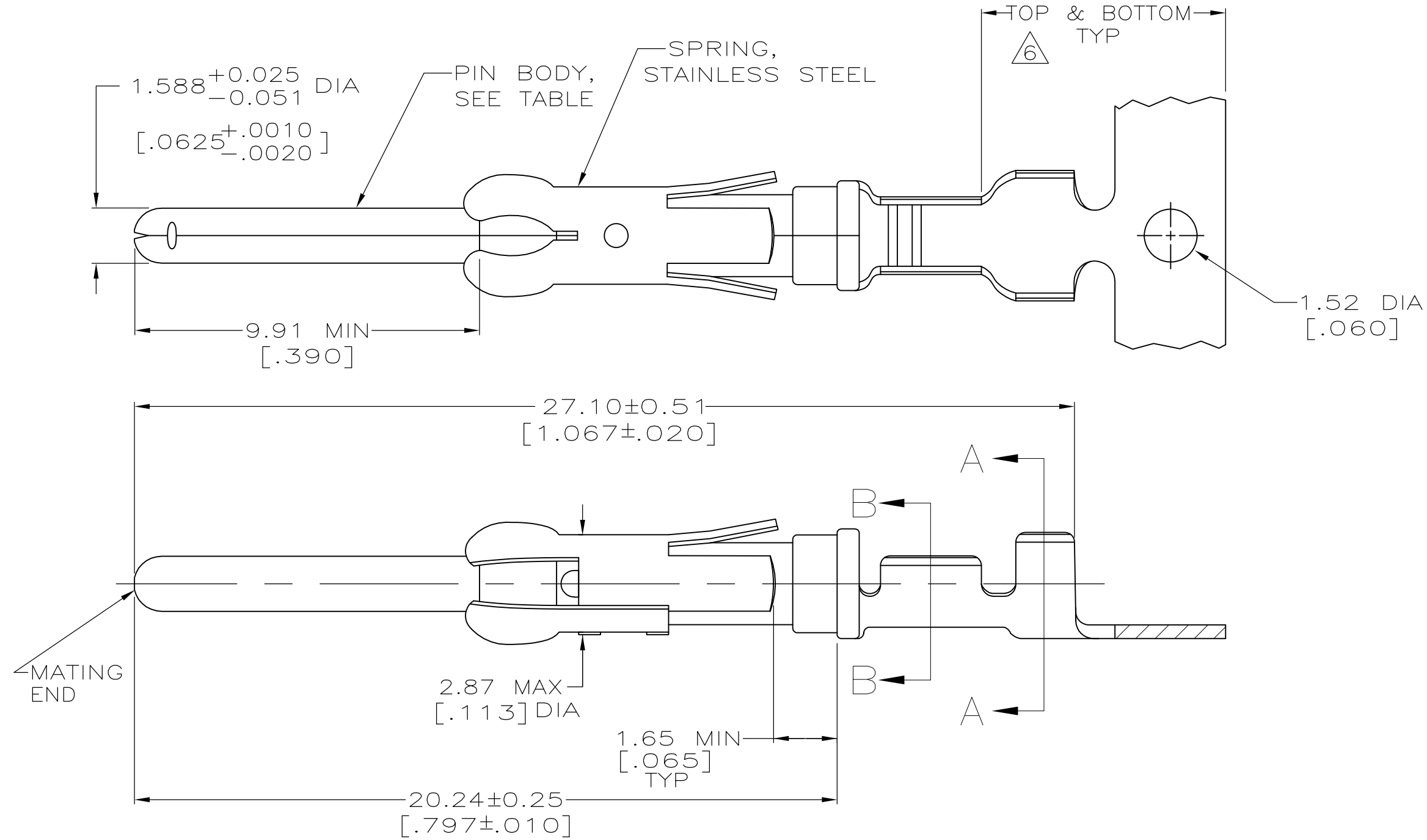


THIS DRAWING IS UNPUBLISHED. RELEASED FOR PUBLICATION
 © COPYRIGHT - By - ALL RIGHTS RESERVED.

LOC	DIST	REVISIONS					
FT	0	P	LTR	DESCRIPTION	DATE	OWN	APVD
		W1		REVISED PER ECO-11-004820	11MAR11	RK	HMR



- 1 REVERSE REELED FOR MINI-APPLICATOR.
- 2 0.76µm [.000030] MIN PRECIOUS METAL PLATE ON MATING END FOR A LENGTH OF 5.08 [.200] MIN OVER 1.27µm [.000050] MIN NICKEL PLATE. GOLD FLASH ALL OVER. CONFORMS TO THE REQUIREMENTS OF TE CONNECTIVITY PRODUCT SPEC 108-10042, BASED ON EIA/ECA-364-1000.01A (CONTROLLED ENVIRONMENT APPLICATIONS).
- 3 0.76µm [.000030] MIN PRECIOUS METAL PLATE ON MATING END FOR A LENGTH OF 5.08 [.200] MIN WITH A UNIFORM GRADIENT TO 0.25µm [.000010] ON REMAINDER, OVER 1.27µm [.000050] MIN NICKEL PLATE. GOLD FLASH ALL OVER. CONFORMS TO THE REQUIREMENTS OF TE CONNECTIVITY PRODUCT SPEC 108-10042, BASED ON EIA/ECA-364-1000.01A (CONTROLLED ENVIRONMENT APPLICATIONS).
- 4 0.38µm [.000015] MIN GOLD PER MIL-G-45204 ON MATING END FOR A LENGTH OF 5.08 [.200] MIN WITH GOLD FLASH ON THE REMAINDER OVER 1.27µm [.000050] MIN NICKEL PER QQ-N-290.
- 5 1.27µm [.000050] MIN GOLD PER MIL-G-45204 ON MATING END FOR A LENGTH OF 5.08 [.200] MIN WITH GOLD FLASH ON THE REMAINDER OVER 3.81µm [.000150] MIN NICKEL PER QQ-N-290.
- 6 GOLD PLATING NEED NOT APPEAR IN THIS AREA.
- 7 1.27µm [.000050] MIN TIN-LEAD PER MIL-T-10727 OVER 1.27µm [.000050] MIN NICKEL PER QQ-N-290.
- 8 WIRE RANGE 24-20 AWG.
- 9 INSULATION RANGE 2.03[.080]-2.54[.100] DIA.
- 10 0.38µm [.000015] MIN GOLD PER MIL-G-45204 ON MATING END FOR A LENGTH OF 5.08 [.200] MIN, 1.27µm [.000050] MIN TIN-LEAD PER MIL-T-10727 FOR A LENGTH OF 5.69 [.224] MIN ON OPPOSITE END, BOTH OVER 1.27µm [.000050] MIN NICKEL PER QQ-N-290 ON ENTIRE CONTACT.
- 11 1.27µm [.000050] MIN TIN PER MIL-T-10727 OVER 1.27µm [.000050] MIN NICKEL PER QQ-N-290.
- 12 OBSOLETE PARTS: OBSOLETE CIS STREAMLINING PER D.RENAUD/D.SINISI

12	OBSOLETE	STANDARD	11	BRASS	1-66400-0	1-66332-5
		1	11	BRASS	1-66400-0	1-66332-4
12	OBSOLETE	1	2	PHOSPHOR BRONZE	-	1-66332-3
	OBSOLETE	1	10	BRASS	66400-5	1-66332-2
	OBSOLETE	1	5	BRASS	-	1-66332-1
		1	2	BRASS	66400-4	66332-8
		1	4	BRASS	66400-3	66332-7
		1	3	BRASS	66400-2	66332-6
		1	7	BRASS	66400-1	66332-5
		STANDARD	2	BRASS	66400-4	66332-4
		STANDARD	4	BRASS	66400-3	66332-3
		STANDARD	7	BRASS	66400-1	66332-1
	REELING	PIN BODY FINISH		PIN BODY	LOOSE PIECE REF	PART NO

THIS DRAWING IS A CONTROLLED DOCUMENT.

DWN	R.SHIREY	7-18-91	STE TE Connectivity
CHK	R.STONE	8-15-91	
APVD	J.WESTMAN	8-19-91	NAME
TOLERANCES UNLESS OTHERWISE SPECIFIED:			CONTACT, PIN, .062, TYPE III+
DIMENSIONS: mm [INCHES]			PRODUCT SPEC
0 PLC ± -			APPLICATION SPEC
1 PLC ± -			SIZE
2 PLC ± 0.13[.005]			CAGE CODE
3 PLC ± -			DRAWING NO
4 PLC ± -			RESTRICTED TO
ANGLES ± ± -			WEIGHT
FINISH			A2 00779 G-66332
MATERIAL SEE CALLOUTS			SEE TABLE
CUSTOMER DRAWING			SCALE 8:1 SHEET 1 OF 1 REV W1