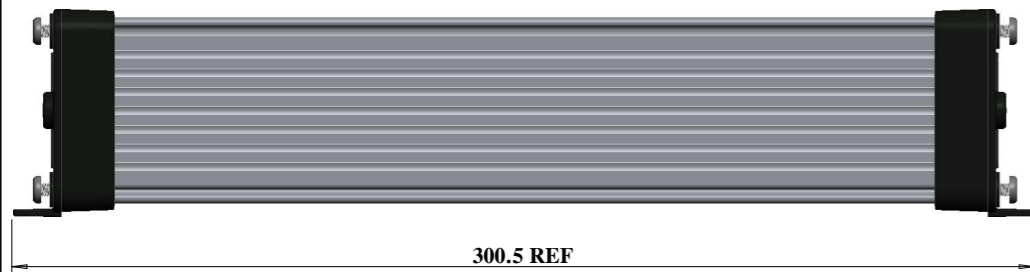
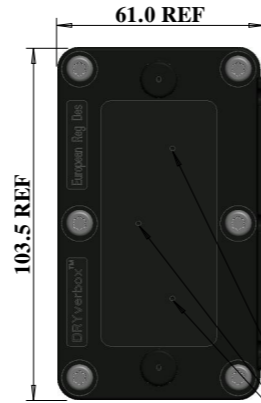
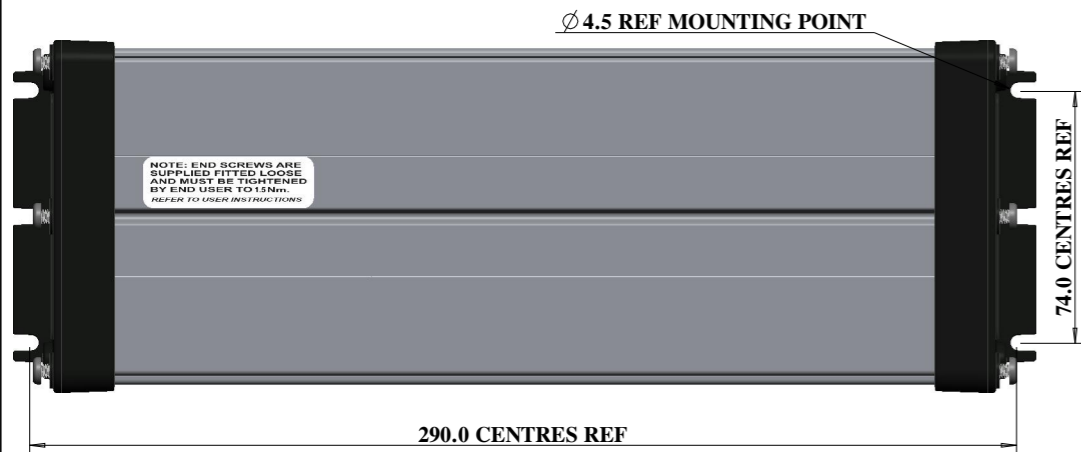


Examples of compatible drivers- see website for currently compatible models/ hole centres.

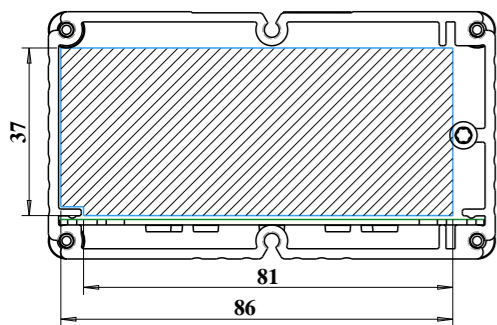


DRILL HOLES TO SUIT WIRING REQUIREMENTS.  
3\* CTS SUIT 3\* M16 GLANDS.  
2\* OUTER CTRS SUIT 2\* M20 GLANDS.

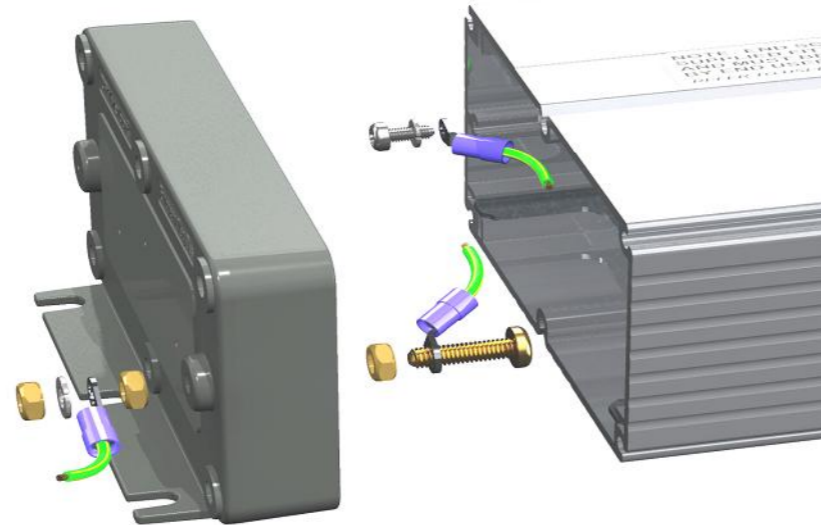
END USER REMOVES THE M4 TORX SCREWS AND CAPS TO INSERT LED DRIVER.  
-ENSURE ALL END SCREWS ARE FULLY TIGHTENED TO 1.5Nm

INTERNAL M3 EARTHING SCREW

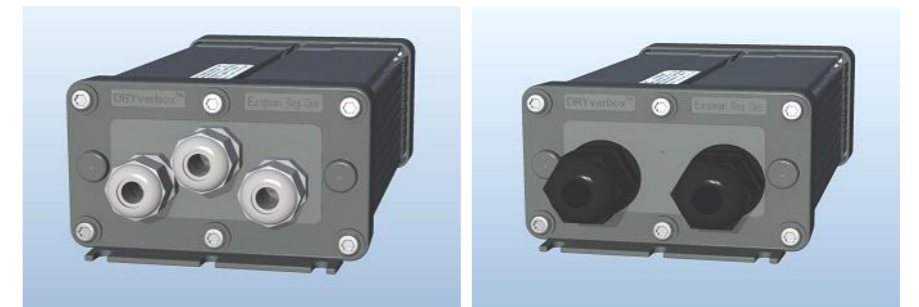
DRIVER MOUNTING PLATE THREADED HOLE MOUNTS FOR LISTED DRIVERS- OTHER COMBINATIONS POSSIBLE. -REQUIRES SCREWS/ NUTS TO FIT REQUIRED DRIVER.



AVAILABLE X-SECTIONAL AREA  
\* APPROX 240mm LONG  
< THIS LENGTH VERSION > .



EXTERNAL EARTH STUD:  
DRILL 4mm HOLE ON MARKED CENTER.  
STUD CREATED USING M4 BOLT, SPLIT WASHER AND NUTS.



EXAMPLE USING 3\* M16 GLANDS

EXAMPLE USING 2\* M20 GLANDS

**DRYVERBOX VERSION:  
MODEL- 02  
LENGTH- 01  
WEIGHT 0.86Kg (WITHOUT GLANDS/ DRIVER).  
< UNIT SUPPLIED BOXED >**