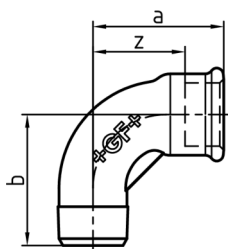


GF Piping Systems Datasheet

valid from
9/9/09

Malleable cast iron fittings

1a Short bend 90°, ISO/EN D4



	Dim. [inch]	EN	Code	SP	kg	a [mm]	b [mm]	z [mm]
B	1/4	•	770 011 102	10	0.051	30	30	20
G	1/4	•	770 011 202	10	0.067	30	30	20
B	3/8	•	770 011 103	10	0.093	36	36	26
G	3/8	•	770 011 203	10	0.101	36	36	26
B	1/2	•	770 011 104	80	0.114	45	45	32
G	1/2	•	770 011 204	80	0.124	45	45	32
B	3/4	•	770 011 105	10	0.217	50	50	35
G	3/4	•	770 011 205	10	0.218	50	50	35
B	1	•	770 011 106	35	0.290	63	63	46
G	1	•	770 011 206	35	0.300	63	63	46
B	1 1/4	•	770 011 107	15	0.531	76	76	57
G	1 1/4	•	770 011 207	15	0.548	76	76	57
B	1 1/2	•	770 011 108	25	0.598	85	85	66
G	1 1/2	•	770 011 208	25	0.621	85	85	66
B	2	•	770 011 109	15	1.060	102	102	78
G	2	•	770 011 209	15	1.060	102	102	78
B	2 1/2	-	770 011 110	8	1.560	115	115	88
G	2 1/2	-	770 011 210	8	1.610	115	115	88
B	3	-	770 011 111	6	2.523	127	127	97
G	3	-	770 011 211	6	2.585	127	127	97
B	4	-	770 011 112	2	4.250	165	165	129
G	4	-	770 011 212	2	4.350	165	165	129

The technical data are not binding and not expressly warranted characteristics of the goods. They are subject to change. Our General Conditions of Sale apply.

Georg Fischer Piping Systems Ltd, Postfach, CH-8201 Schaffhausen/Switzerland
 Phone +41 -(0)52-631 1111
 e-mail: info.ps@georgfischer.com
 Internet: <http://www.piping.georgfischer.com>