



EMC- Shielding Products

Fabric-/Foil over Foam Gaskets
Hollow chamber-, Clip-on-, EPDM-Gaskets
Conductive Fabrics and Fleeces
Conductive Foam



MTC®

Micro Tech Components GmbH

Lauinger Straße 16
D-89407 Dillingen

Tel.: +49 (0)9071 / 7945-0

Fax: +49 (0)9071 / 7945-20

E-Mail: mtc.info@mtc.de



mtc[®]

an acal group company



Product Overview



Fabric-/Foil over Foam Gaskets
page 5



Hollow Chamber-,
Clip-on-and EPDM-Profiles
page 13



IP/EMC - Gaskets
(Combi-Gaskets)
page 15



Punched Parts
EMC Connector Seals
page 17



Conductive Foam
page 20



Conductive Fabrics and
Fleeces
page 22



Conductive Tapes
page 24



MTC- About us

MODERN COMPANY WITH LONG TRADITION

A specialist in the protection of electronic circuits and the environment from high frequency electromagnetic radiation, MTC develops, manufactures and sells high quality EMC shielding materials and ESD solutions. We use the very latest technologies and work with a network of efficient suppliers.

20 years of experience in the business, a sophisticated corporate culture and steady growth provide guarantees for long term, successful cooperation with our customers and partners.

SAFETY AND COMPETENCE

MTC is proud of the continuously positive development of its order books.

Specialized and motivated personnel with technical knowledge and a good understanding of the market (also together with specialist partner companies) provide support which is both practical and customer-focussed. The customer proximity, quality awareness and range of ideas of MTC personnel result in tailor-made, innovative solutions.

MTC - A GLOBAL PLAYER

Our head office is located in Dillingen (Bavaria). This is where you will find the appropriate contacts for commercial matters (customer service, sales administration, general administration) and technical support. The production and delivery of our goods are also controlled from here.

We also have manufacturing sites in Germany and South Korea and a sales outlet in Hong Kong. We provide services for the Asian market from this base.

FAIR PARTNERSHIP FROM THE VERY BEGINNING

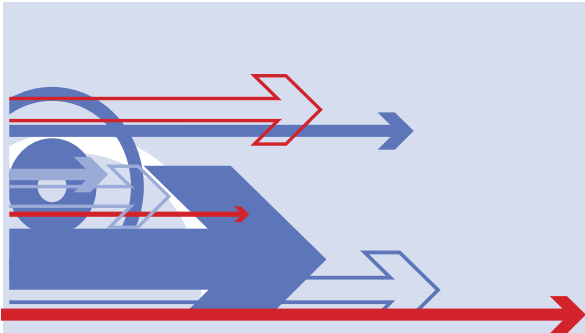
Our customers can rely on our solutions being perfectly tailored to their wishes and needs. Normally we work with our customers from the early stages of projects and act as adviser from the birth of the idea to the mass produced product.

STANDARD OR CUSTOMIZED SOLUTIONS

Our product portfolio includes both an extensive range of standard products and products tailored for specific customer needs. Send us your ideas and your individual installation situation and we will find a solution for you quickly and at low cost.

The MTC manufacturing sites in Germany and South Korea guarantee our customers fast reaction times for the development and supply of EMC materials. Flat organisational structures and our own production capacities enable MTC to achieve lead times of just a few days.

Fabric-/Foil over Foam Gaskets



Our standard gaskets have a **polyurethane foam core** which is available in three different hardness values (soft, medium and hard). The foam core is covered with a **conductive fabric with a copper-nickel metal coating**. On request the core can also be covered with aluminium foil or other metal coated fabrics.



MTC fabric and aluminium over foam gaskets are manufactured in **our own production plants in Germany and Asia**.



We hold a **UL94-V0 certification** for our gaskets.



Our **standard range** includes a large range of sizes and shapes. **Customized dimensions** can be supplied at low cost at any time. The material can also be cut to the length you require or modified to suit your individual needs.



Our profiles are fitted with a **non-conductive adhesive tape** as standard. The following other versions are available to order and for special applications:



- gaskets with conductive adhesive tape
- several adhesive tapes on a single profile
- adhesive tapes with removal aid (Wide Release Liner)
- small and miniature parts assembled on self adhesive paper (STP)





In addition to their excellent shielding effectiveness (as high as over 80 dB @ 100 MHz – 18 GHz), our seals offer you the following benefits:

- They are easy to work and can be cut with a pair of scissors.
- They offer high resistance to wear.
- Less connection elements are required between the housing components (thus reducing costs).
- Low contact pressure forces mean that thinner metal plates can be used, which in turn reduces costs.
- They have low surface resistance (< 0.08 Ohm).
- Seals are a cost-saving method of shielding.

Our EMC gaskets provide the following advantages:

- **Short delivery time by own manufacturing**
- Available with different degrees of foam hardness
- Available with adhesive tape
- Available with several tapes for special applications
- Available with Cu/Ni coated fabric (standard) and other coatings

Find profiles

Example: **DRE 6x4 NI - N2 V0 - xx**

Product series

- DAU Clip-on profiles
- DCW C-shape profiles
- DHR D-shape profiles
- DKE Knife-edge-profiles
- DKO Combi-profiles (IP + EMC)
- DLS L-shape profiles
- DRE Rectangular profiles
- DMP M-shape profiles
- DPT P-shape profiles
- DQU Square profiles
- DTA Triangular profiles, asymmetric
- DTR Triangular profiles, symmetric
- DST Punched parts
- HHR Hollow chamber profiles

Dimensions

- Width x height in mm

Surface material (if appropriate)

- NI Copper/nickel
- AG Silver
- AL Aluminium

Adhesive tape (if appropriate)

- N Non-conductive
 - C Conductive
- + width in mm

UL-level (if appropriate)

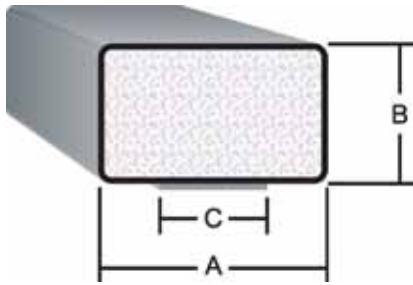
- V0 UL 94 V-0 compliant
- XX Not certified / not appropriate

Length

- xx Length in mm
- REEL Endless reel
- STPxx As **S**heet **T**ype **P**ackage
- WRLxx With **W**ide **R**elease **L**iner

Fabric-/Foil over Foam Gaskets

Rectangular profiles, width up to 9,5 mm



Item number	Width (A)	Height (B)	Standard tape width (C)
DRE3x1,2NI	3,0	1,2	1,5
DRE3x2NI	3,0	2,0	1,5
DRE4x1,2NI	4,0	1,2	2,0
DRE4x2NI	4,0	2,0	2,0
DRE4x3NI	4,0	3,0	2,0
DRE5x0,5NI	5,0	0,5	2,0
DRE5x1,2NI	5,0	1,2	2,0
DRE5x2NI	5,0	2,0	2,0
DRE5x3NI	5,0	3,0	2,0
DRE5x4NI	5,0	4,0	2,0
DRE6x1,2NI	6,0	1,2	2,5
DRE6x2NI	6,0	2,0	2,5
DRE6x3NI	6,0	3,0	2,5
DRE6x5NI	6,0	5,0	2,5
DRE6x7NI	6,0	7,0	2,5
DRE6x8NI	6,0	8,0	2,5
DRE6,4x3,2NI	6,4	3,2	2,5
DRE7x1,2NI	7,0	1,2	3,0
DRE7x2NI	7,0	2,0	3,0
DRE7x4NI	7,0	4,0	3,0
DRE7x5NI	7,0	5,0	3,0
DRE7x6NI	7,0	6,0	3,0
DRE8x1,5NI	8,0	1,5	4,0
DRE8x3NI	8,0	3,0	4,0
DRE8x5NI	8,0	5,0	4,0
DRE8x10NI	8,0	10,0	4,0
DRE8x12NI	8,0	12,0	4,0
DRE9x3NI	9,0	3,0	4,0
DRE9x4NI	9,0	4,0	4,0
DRE9x6NI	9,0	6,0	4,0
DRE9,5x6,4NI	9,5	6,4	4,0
DRE9,5x12,7NI	9,5	12,7	4,0

Other dimensions are also available.

Fabric-/Foil over Foam Gaskets

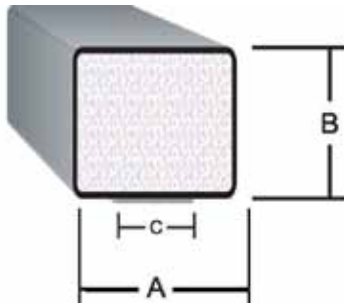
Rectangular profiles, width over 10,0 mm

Item number	Width (A)	Height (B)	Standard tape width (C)
DRE10x0,5NI	10,0	0,5	4,0
DRE10x1,2NI	10,0	1,2	4,0
DRE10x2NI	10,0	2,0	4,0
DRE10x3NI	10,0	3,0	4,0
DRE10x4NI	10,0	4,0	4,0
DRE10x5NI	10,0	5,0	4,0
DRE10x7NI	10,0	7,0	4,0
DRE10x8NI	10,0	8,0	4,0
DRE10x12NI	10,0	12,0	4,0
DRE10x15NI	10,0	15,0	4,0
DRE11,5x10,5NI	11,5	10,5	5,0
DRE12x10NI	12,0	10,0	5,0
DRE12x13NI	12,0	13,0	5,0
DRE12,7x3,2NI	12,7	3,2	5,0
DRE12,7x6,4NI	12,7	6,4	5,0
DRE12,7x9,5NI	12,7	9,5	5,0
DRE13x1NI	13,0	1,0	5,0
DRE13x2NI	13,0	2,0	5,0
DRE13x3NI	13,0	3,0	5,0
DRE13x5NI	13,0	5,0	5,0
DRE13x7NI	13,0	7,0	5,0
DRE13x10NI	13,0	10,0	5,0
DRE14x1NI	14,0	1,0	6,0
DRE15x1NI	15,0	1,0	6,0
DRE15x2NI	15,0	2,0	6,0
DRE15x4NI	15,0	4,0	6,0
DRE15x8NI	15,0	8,0	6,0
DRE15x10NI	15,0	10,0	6,0
DRE17x7NI	17,0	7,0	7,0
DRE20x10NI	20,0	10,0	8,0
DRE21x1NI	21,0	1,0	8,0
DRE22x2NI	22,0	2,0	9,0
DRE25x1,5NI	25,0	1,5	12,0
DRE25x10NI	25,0	10,0	12,0
DRE25x20NI	25,0	20,0	12,0
DRE30x2NI	30,0	2,0	12,0
DRE30x10NI	30,0	10,0	12,0

Other dimensions are also available.

Fabric-/Foil over Foam Gaskets

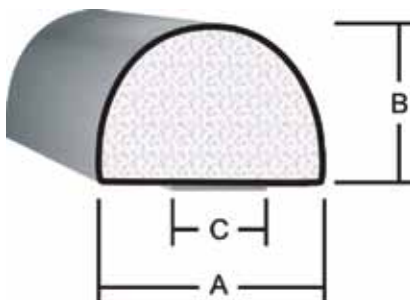
Square profiles



Item number	Width (A)	Height (B)	Standard tape width (C)
DQU2x2NI	2,0	2,0	1,5
DQU3x3NI	3,0	3,0	1,5
DQU5x5NI	5,0	5,0	2,0
DQU6x6NI	6,0	6,0	2,5
DQU6,4x6,4NI	6,4	6,4	2,5
DQU7x7NI	7,0	7,0	3,0
DQU8x8NI	8,0	8,0	4,0
DQU9x9NI	9,0	9,0	4,0
DQU9,5x9,5NI	9,5	9,5	4,0
DQU10x10NI	10,0	10,0	4,0
DQU12,7x12,7NI	12,7	12,7	5,0
DQU17x17NI	17,0	17,0	7,0

Other dimensions are also available.

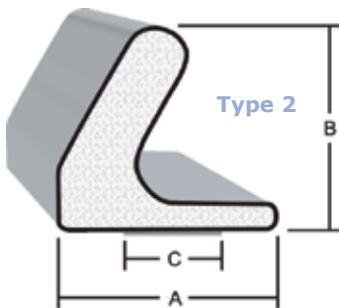
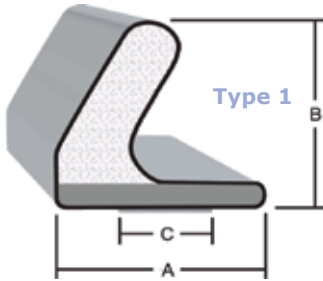
D-shape profiles



Item number	Width (A)	Height (B)	Standard tape width (C)
DHR2x1,5NI	2,0	1,5	1,5
DHR2,3x2,3NI	2,3	2,3	2,0
DHR3x3NI	3,0	3,0	2,0
DHR3,8x1,5NI	3,8	1,5	2,0
DHR3,8x2,3NI	3,8	2,3	2,0
DHR3,8x3NI	3,8	3,0	2,0
DHR4x3NI	4,0	3,0	2,0
DHR4x4NI	4,0	4,0	2,0
DHR5x2NI	5,0	2,0	2,0
DHR5x3NI	5,0	3,0	2,5
DHR6x2NI	6,0	2,0	2,5
DHR6x3NI	6,0	3,0	2,5
DHR6x4NI	6,0	4,0	2,5
DHR6x5NI	6,0	5,0	2,5
DHR6,4x3,2NI	6,4	3,2	2,5
DHR6,4x3,6NI	6,4	3,6	2,5
DHR6,4x6,4NI	6,4	6,4	4,0
DHR7x2,5NI	7,0	2,5	3,0
DHR7,6x4,8NI	7,6	4,8	3,0
DHR8x4NI	8,0	4,0	3,0
DHR8x5,5NI	8,0	5,5	3,0
DHR8x6NI	8,0	6,0	3,0
DHR8x7 NI	8,0	7,0	3,0
DHR9x3NI	9,0	3,0	4,0
DHR9,5x6,4NI	9,5	6,4	4,0
DHR10x4NI	10,0	4,0	4,0
DHR10x7NI	10,0	7,0	4,0
DHR10x8NI	10,0	8,0	4,0
DHR10x10NI	10,0	10,0	4,0
DHR10x18NI	10,0	18,0	4,0
DHR12,7x12,7NI	12,7	12,7	5,0

Other dimensions are also available.

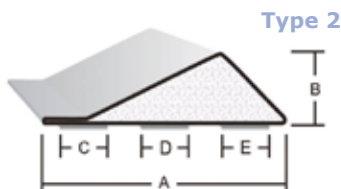
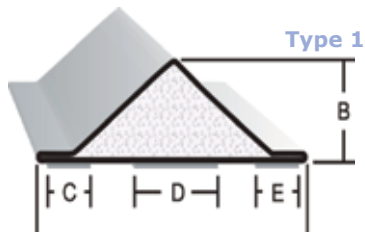
C-shape profiles



Item number	Width (A)	Height (B)	Standard tape width (C)	Type
DCW6x3,5NI	6,0	3,5	2,5	1
DCW6x6NI	6,0	6,0	2,5	1
DCW10,7x9,8NI	10,7	9,8	5,0	1
DCW11x11NI	11,0	11,0	5,0	2
DCW14,7x17,1NI	14,7	17,1	6,0	2
DCW14,7x17,9NI	14,7	17,9	6,0	2

Other dimensions are also available.

Triangular profiles

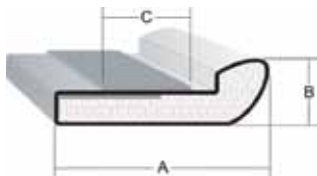


Item number	A	B	C	D	E	Type
DTR9,1x3NI	9,10	3,00	2,50		2,50	1
DTR10x2,3NI	10,00	2,30	2,50	2,50	2,50	1
DTR10x3,2NI	10,00	3,20	2,50	2,50	2,50	1
DTA10x4,5NI	10,00	4,50	2,50	2,50	2,50	2
DTA12,7x3,2NI	12,70	3,20	3,00	4,50	3,00	2

Other dimensions are also available.

- Optimal for use with μ TCA & ATCA plug-in modules

Knife-edge-profiles

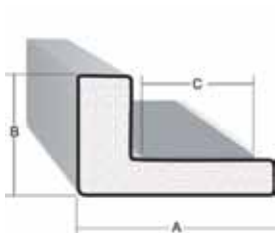


Item number	Width (A)	Height (B)	Standard tape width (C)
DKE8x2,7NI	8,0	2,7	2,5
DKE11,3x2,3NI	11,3	2,3	6,0
DKE11,3x2,7NI	11,3	2,7	6,0

Other dimensions are also available.

Top side or lower side adhesive tape positioning available.

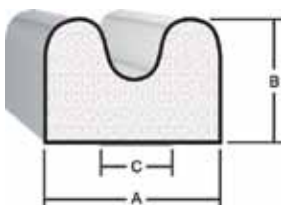
L-shape profiles



Item number	Width (A)	Height (B)	Standard tape width (C)
DLS5,6x3NI	5,6	3,0	3,0

Other dimensions are also available.

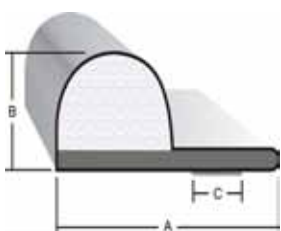
M-shape profiles



Item number	Width (A)	Height (B)	Standard tape width (C)
DMP12,7x9,5NI	12,7	9,5	5,0

Other dimensions are also available.

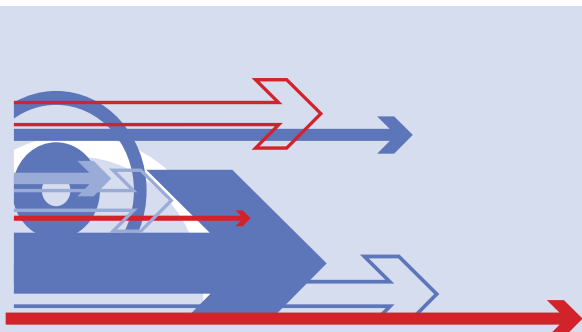
P-shape profiles



Item number	Width (A)	Height (B)	Standard tape width (C)
DPT8x3NI	8,0	3,0	3,0
DPT17x10NI	17,0	10,0	4,0
DPT18x4,5/1NI	18,0	4,5	5,0
DPT29x4,8/1NI	29,0	4,8	5,0

Other dimensions are also available.

Hollow chamber-, Clip-on- and EPDM-profiles



In addition to our standard EMC seals with foam cores, MTC can also supply EPDM/rubber-based EMC seals, such as hollow chamber, slot-in/edge protection and solid profiles. These profiles can be used wherever constructive or functional situations require them.

The core of the hollow chamber and slot-in/edge protection profile is made of **expanded rubber** and is covered with **copper-nickel fabric** as standard. To order they can also be covered with alternative metal-coated fabrics or aluminium foil.

Our hollow chamber profiles can be supplied **with or without adhesive tape**. They are also available with several adhesive tapes for special applications.

Slot-in/edge protection profiles have an **integrated loop tape** and a **U-shaped** section. They are extremely flexible and are primarily used on control cabinets.

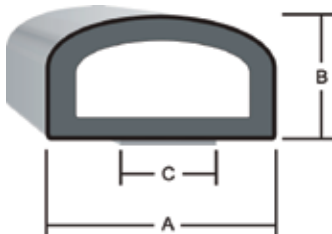
These slot-in/edge protection profiles are installed by simply being pressed into position on the edges being encased by hand. The profiles are mounted by a clamping effect. No adhesive or the like is required. They are weatherproof and resistant to a temperature range from approx. -25°C to approx. +80°C.



Both types of section can be supplied in **any lengths** and also **on rolls**. We can provide short lead times for slot-in/edge protection and hollow chamber profiles from our standard range. If you require specific widths and heights or cross-sections which must be produced using special tools, we have to insist on a minimum purchase quantity to justify our manufacturing costs.

Our hollow chamber-, clip-on- and EPDM-profiles provide the following advantages:

- **Short delivery time**
- Available with Cu/Ni coated fabric (standard) and other coatings
- Hollow chamber profiles are available with and without adhesive tape



Hollow chamber profiles

Item number	Width (A)	Height (B)
DAU16x8	8,0	16,0

Other dimensions are also available.

IP/EMC Gaskets (Combi Gaskets)



In addition to EMC and ESD shielding, **protection against environmental influences** such as dust and moisture is often also required. This can be achieved by using so-called combi gaskets). Either of the following may be used for this purpose:

- separate seals for EMC and IP (Intrusion Protection) or
- combi gaskets

Which version should be given preference depends primarily on the design situation of the housing or control cabinet that you wish to seal.

IP/EMC seals are mainly used where electronic devices require both EMC/ESD protection and also protection from environmental influences. This means that they are often used outdoors to protect equipment from moisture, dirt, etc.

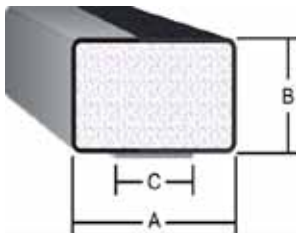
A range of **core materials** (for example EPDM, expanded rubber, NBR, etc.) in a range of hardness levels is available for IP/EMC and combi seals. The EMC portion of the combi gasket can be realized with knitted wire mesh gaskets, conductive fabric over foam gaskets or Aluminium foil over foam gaskets. With the fabric over foam and Aluminium over foil version it is also possible to partially wrap the foam core. You can also decide for yourself whether your seal should be supplied **with or without adhesive tape**.



Our large **standard range** contains a wide selection of shapes and sizes. If you cannot find a section in our range that meets your requirements, we will develop the seals you require with you or manufacture customized seals to your drawing specifications.

Our combi gaskets provide the following advantages:

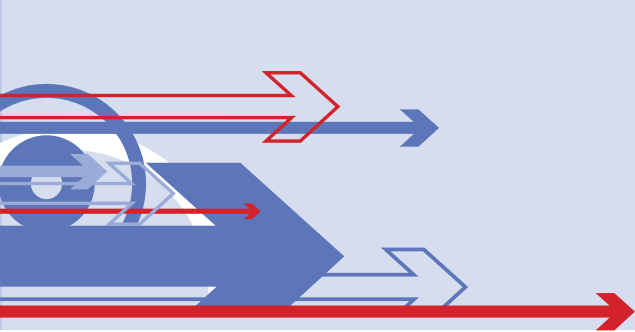
- **Short delivery time by own manufacturing**
- Partly coated EMI gaskets with rectangular profile available for combined IP- and EMI protection
- Available with adhesive tape
- Available with several adhesive tapes for special applications
- Available with Cu/Ni coated fabric (standard) and other coatings



Item number	Width (A)	Height (B)	Standard tape width (C)
DKO12x6NI	12,0	6,0	5,0
DKO18x12NI	18,0	12,0	10,0

Other dimensions are also available.

Punched Parts/EMC Connector Gaskets



Our modern and flexible production enables us to process our standard products according to your need.



In addition to our standard seals, for example for **D-Sub plug connectors**, our customers primarily use **customized stampings** for entire connector groups. We manufacture these drawing parts at low cost using our EMC base materials. We can produce almost every conceivable stamping design or geometry (D-Sub, LPT, USB, network RJ-45, etc.).



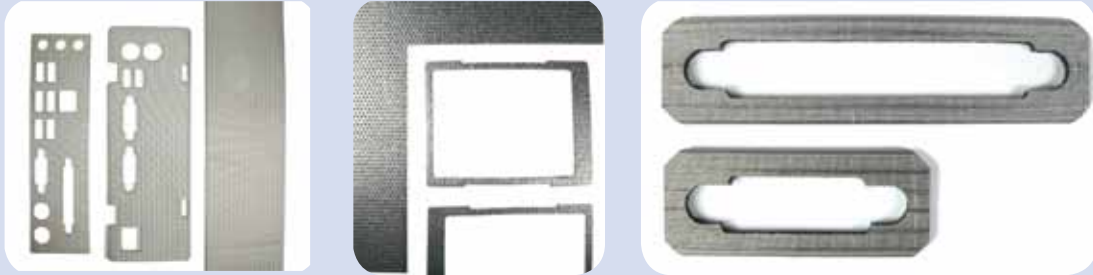
Punched parts can be supplied in a **range of materials**. The following base materials are available:

- metal-coated fabrics and fleeces
- completely conductive foam
- foam covered with conductive fabric or aluminium foil
- copper- and aluminium tapes and
- conductive silicone sheets

Various core materials (for example open-cell PU foam or closed-cell expanded rubber) with **various hardness values** can be used depending on our customers' requirements.

Our **conductive fabrics and fleeces** can be supplied with a range of metal coatings and finishes.

Conductive silicone sheets can be used for industrial applications in dirty or oily atmospheres since it is a particularly resistant base material.



Plug connector seals are always used to connect plug connectors to the housing. This is case, for example, if the following are to be connected to a device housing:

- connections of personal computers and servers with a connector seal
- the connections of industrial computers
- LAN and USB jacks
- D-Sub plug connectors
- modern monitor connections (DVI, HDMI and Display Port)
- single or multi-pole industrial plug connectors

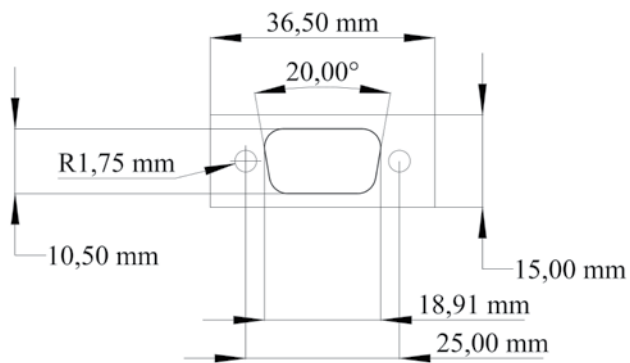
Our punched parts/EMC connector gaskets provide the following advantages:

- **Short delivery time by own manufacturing**, also for custom parts
- Standard sizes for D-Sub plug connectors
- Custom sizes and cutouts available
- Easy tool production on the basis of CAD data or other drawings
- Optimal for electronic connector panels and I/O-Shields, e.g. compliant to ATX- or BTX-standard

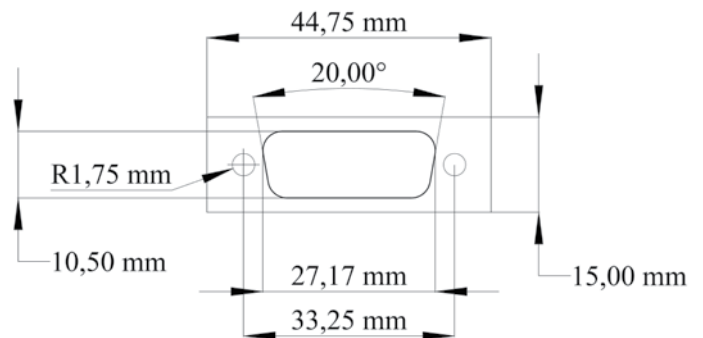
Punched Parts/EMC Connector Gaskets

Standard-gaskets for D-Sub

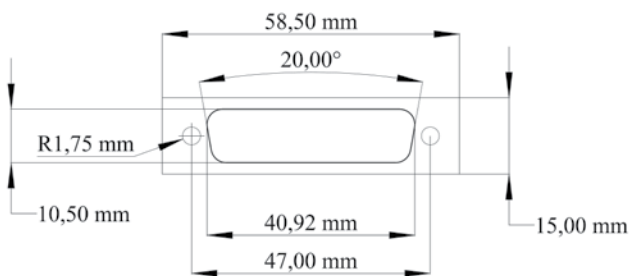
D-Sub 9



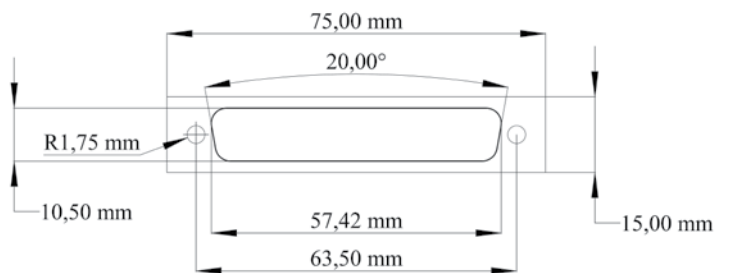
D-Sub 15

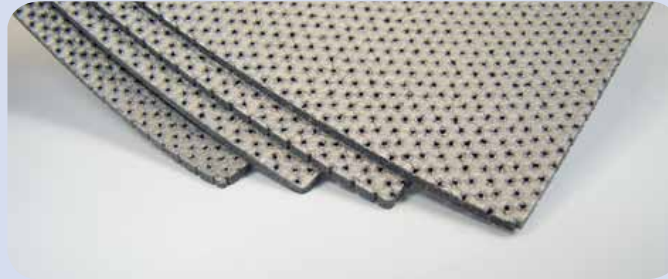
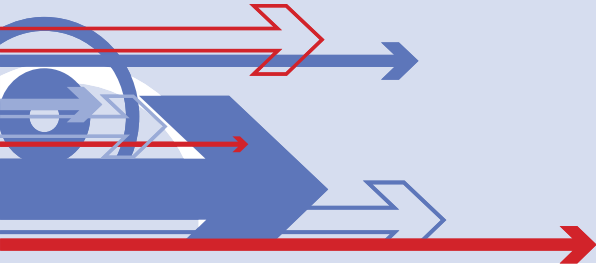


D-Sub 25



D-Sub 37





Our conductive foam gaskets are perforated at variable intervals before being metal coated in (metal) baths. This completely saturates the foam and makes it fully conductive (both horizontally and vertically), thus ensuring a particularly **good conductive connection** between the top and bottom. The seals have **excellent EMC properties** as a result of the small distance between the holes.

Our conductive foams are available in **thicknesses of 0.3 mm to 1.5 mm** and can be supplied with a **copper-nickel metal coating**.

They can be used in a temperature range of **approx. -25°C to approx. +80°C** and feature **excellent shielding effectiveness** in the high frequency range.

Conductive foam seals have improved Z-axis conductivity which means that their shielding properties can be increased to **over 90 dB** within a wide frequency range.

Our foam seals are available in a **wide range of standard dimensions**. We can supply them either in the form of **thin panels** which are ideal for shielding large areas or in **customized stampings for I/O shielding**.

Conductive Foam

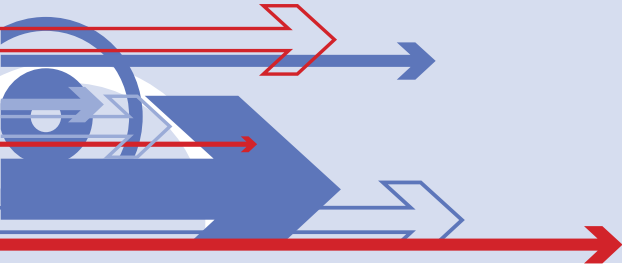


MTC will also be delighted to help you in the development of a suitable foam seal for your specific application. We will provide you with a quotation for a suitable solution on the basis of your details (sketch, technical drawing, etc.) and with the inclusion of your electronic device.

Our conductive foam provides the following advantages:

- Flexible and inexpensive solution for contacting areas
- Available with custom cutouts
- Thickness range 0.3 - 1.5mm
- CuNi metallized

Item number	Width (mm)	Thickness (mm)
RCF1000x0,3	1000	0.3
RCF1000x0,5	1000	0,5
RCF1000x0,7	1000	0,7
RCF1000x1,0	1000	1,0
RCF1000x1,5	1000	1,5



The in-house production of our fabric seals means that we have a wide range of different technical fabrics and fleece types which we can supply exclusively for refinishing.

Our fabrics and fleeces are generally **polyester fabric**. Depending on your requirements, we can supply the material with a **range of metal coatings**. Copper, nickel, tin or a range of combinations are all possible. The fabrics are drawn with various (metal) baths and completely saturated. This makes the fabric and fleece fully conductive.

In addition you can choose from a **range of densities and weaves**.

Our fabrics and fleeces can be fitted with **conductive or non-conductive adhesive** to suit your needs and supplied on **rolls** or cut to **customer-specified dimensions**.

The conductive fabric and fleece can also **be stamped** or otherwise finished to customers' specifications for special applications.

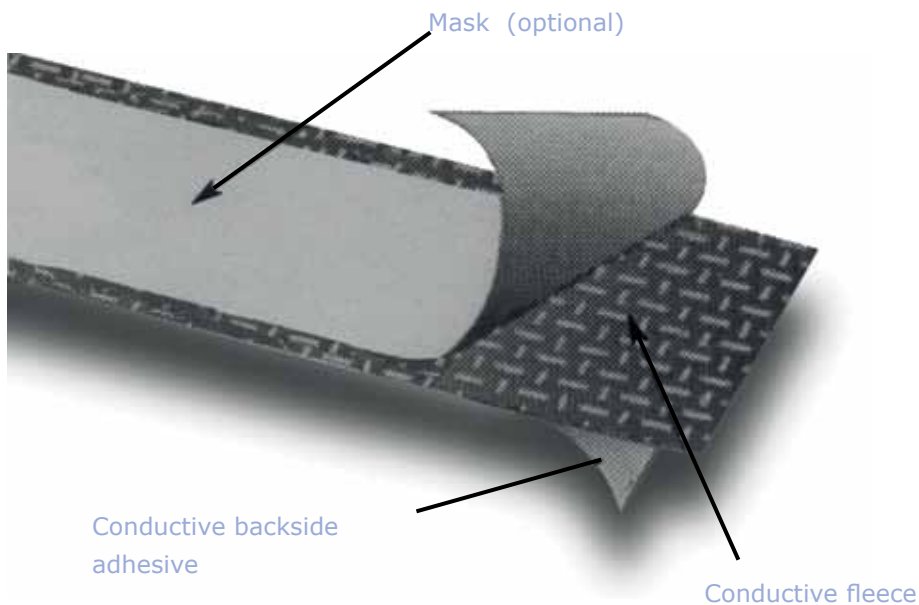
Conductive fabric and fleece provide **excellent shielding effectiveness**. Since this is very lightweight and high strength material, it also features extremely high flexibility.



Our conductive fabrics and fleeces provide the following advantages: :

- Large selection of different metallized plating (e. g. Cu/Ni, Cu/Ni-Sn, Ag, Au, Carbon), densities and knitting types.
- Also available with conductive adhesive and cut to rolls with width of max. 1070 mm.

Item number	Coating	Special Features
RGW-WR-260-PCN	Cu/Ni	Fabric, rip stop
RGW-WR-260-PCN(ATU)	Cu/Ni	Fabric, coating(ATU), rip stop
RGW-WD-250-NICO	Cu/Ni-Co	Fabric, for better attenuation at low frequencies
RGW-WRD-270-PCN	Cu/Ni	Fabric, for better attenuation, rip stop
RGW-W-290-PCN	Cu/Ni	Fabric
RGW-WPD-300-PCN	Cu/Ni	Fabric, very thin
RGW-NW-50-PCN	Cu/Ni	Fleece
RGW-M-80-PCNR	Cu/Ni-Sn	Mesh, black surface
RGW-SWRP-370-PCNS	Cu/Ni-Sn	Fabric, black



- Flexible, high tension fleece material
- Metallized with copper and tin with an extremely good conductivity and a high corrosion protection
- Further widths and lengths available
- The mask serves as protective cover for the conductive surface if powder coating or paint finishing is intended

Width	Roll length	Mask	Adhesive	Item number
8mm	33m	without mask	conductive	RUF8mmSN-Rolle33m-without mask
10mm	33m	without mask	conductive	RUF10mmSN-Rolle33m-without mask
20mm	33m	without mask	conductive	RUF20mmSN-Rolle33m-without mask
38mm	33m	without mask	conductive	RUF38mmSN-Rolle33m-without mask
50mm	33m	without mask	conductive	RUF50mmSN-Rolle33m-without mask
6mm	33m	4mm	conductive	RUF6mmSN-Rolle33m-with mask 4mm
10mm	33m	8mm	conductive	RUF10mmSN-Rolle33m-with mask 8mm
20mm	33m	16mm	conductive	RUF20mmSN-Rolle33m-with mask 16mm

Certificates

If you choose MTC as your supplier you will benefit not only from our flexibility and our competitive prices but also from our long lasting experience and professionalism. As a matter of course we are an ISO 9001:2008 and ISO 14001:2005 certified company.



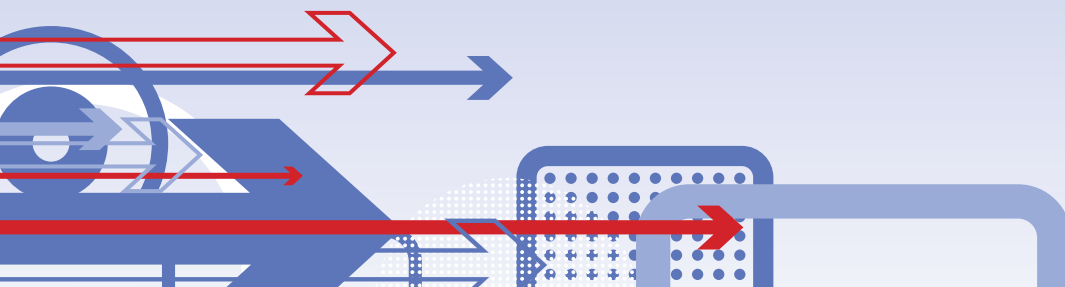
The ratification of the relevant regulations ROHS / WEEE is an important issue in our industry. MTC has detected this early and was one of the first providers with appropriate solutions. Therefore all our products are without exception RoHS compliant. Of course, we also look at the RoHS compliance of our suppliers.



UL certification is mandatory for many of our customers for the worldwide sale of their products. Here you can rely on MTC. Our products are, as far as possible, tested according to UL 94.

We are ready to send you all required information so that you can verify this at UL. For MTC this transparency is a matter of course!





MTC[®]

Micro Tech Components GmbH

Lauinger Straße 16
D-89407 Dillingen

Tel.: +49 (0)9071 / 7945-0

Fax: +49 (0)9071 / 7945-20

E-Mail: mtc.info@mtc.de

