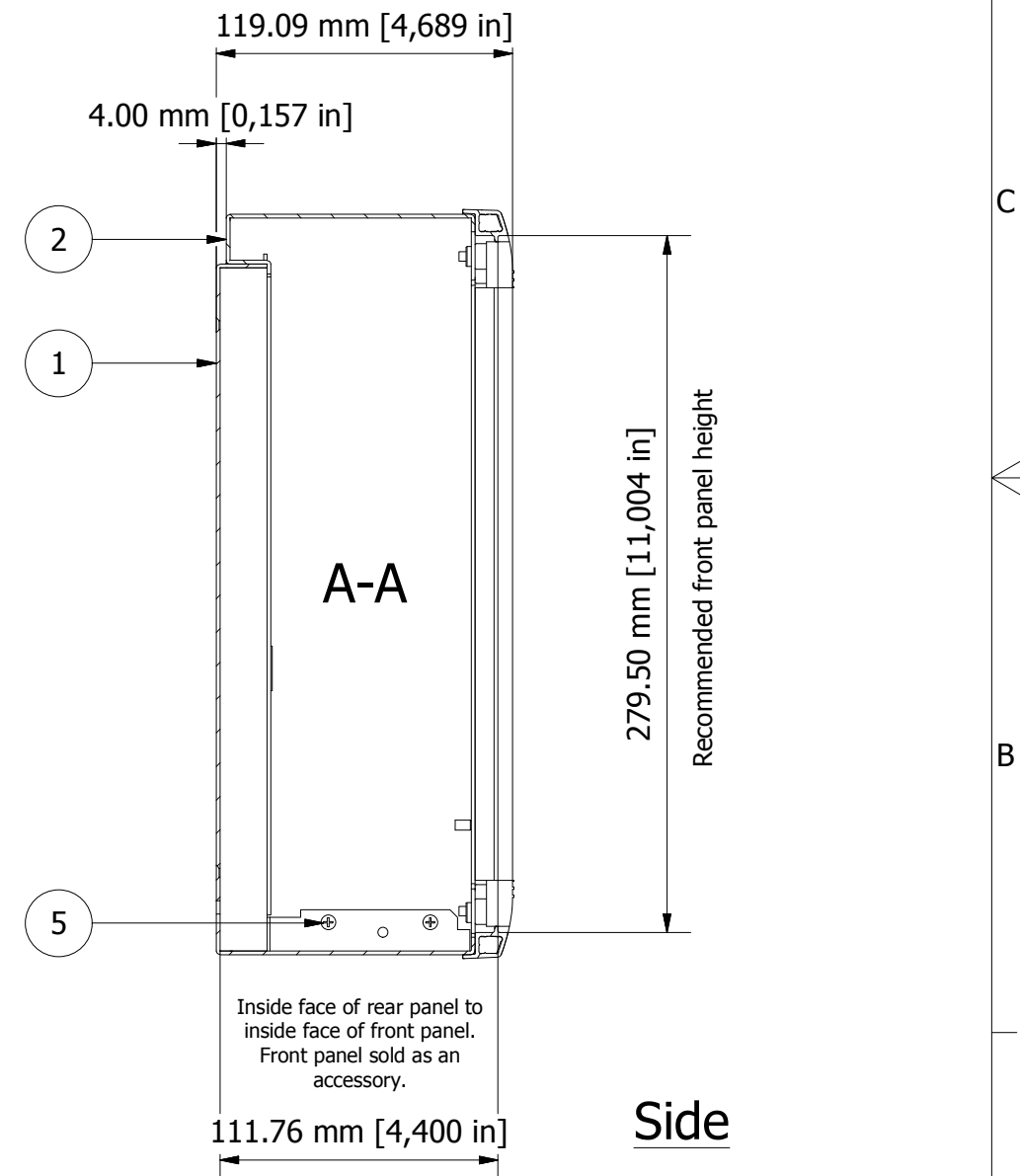


PARTS LIST			
ITEM	QTY	PART NUMBER	DESCRIPTION
1	1	M5801041	Rear Cover
2	1	M5801040	Top Cover
3	1	M5802040	Bezel Assembly
4	4	M4 x 16 mm Screw	Bezel Fixing Screws
5	4	M4 x 6 mm Pan Screw	Cover Fixing Screws



**Build & Finish.**  
All parts are made from aluminium, except hardware. The finish is fine texture epoxy polyester powder paint. The case is fabricated from 1.5 mm material & then painted RAL 9005. The bezel is aluminium die castings & extrusions & then painted RAL 9005.

© OKW Enclosures Ltd (Date as shown). This drawing contains proprietary information of OKW Enclosures Ltd and is tendered subject to the following conditions. The information be retained in confidence, not be reproduced or copied, and not be used or incorporated in any product, unless permission is obtained in writing from OKW Enclosures Ltd.

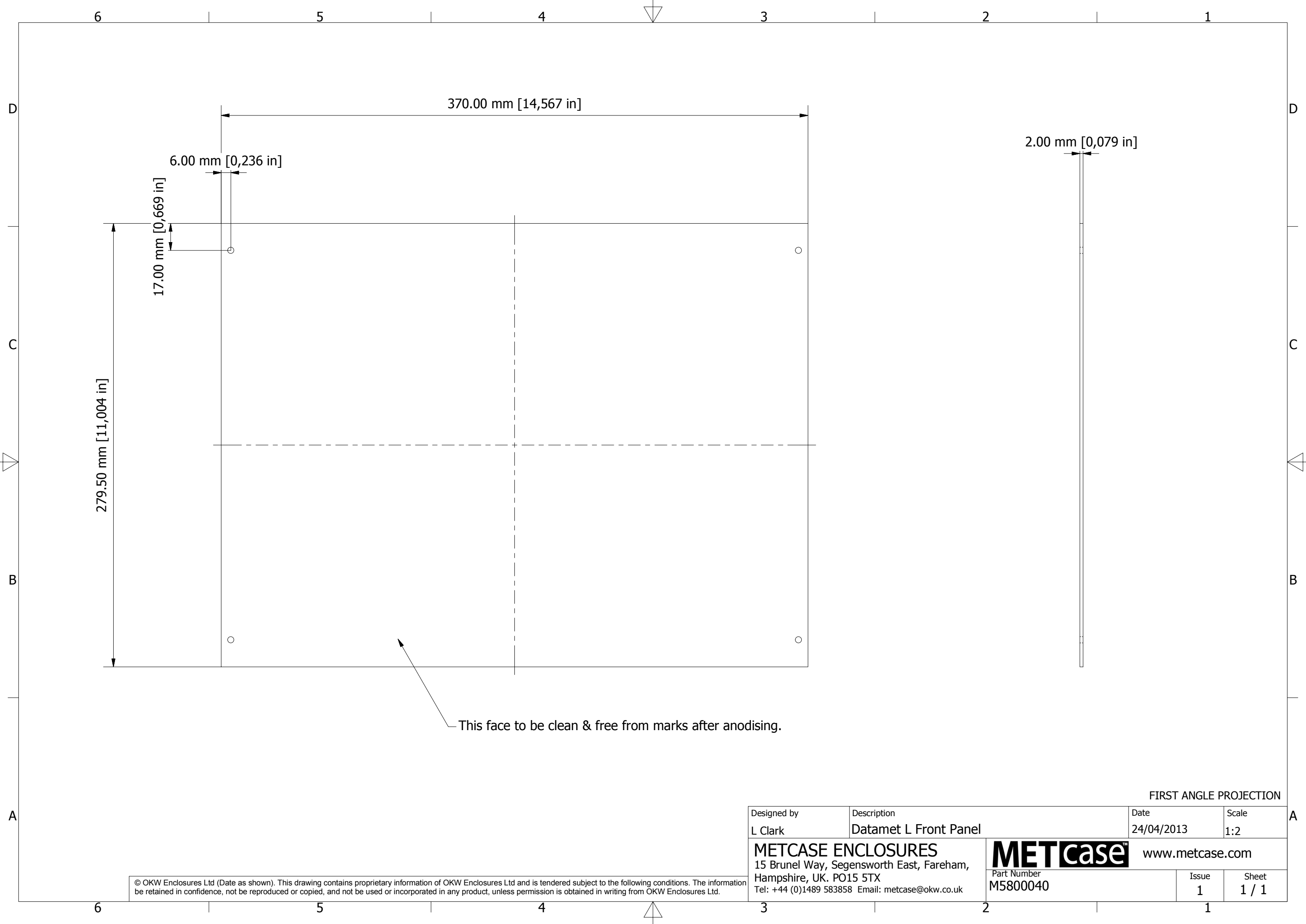
FIRST ANGLE PROJECTION

Designed by L Clark	Description Datamet L	Date 18/04/2013	Scale 1:3
------------------------	--------------------------	--------------------	--------------

**METCASE ENCLOSURES**  
15 Brunel Way, Segensworth East, Fareham,  
Hampshire, UK. PO15 5TX  
Tel: +44 (0)1489 583858 Email: metcase@okw.co.uk

**METcase™** www.metcase.com

Part Number M5840109	Issue 1	Sheet 1 / 1
-------------------------	------------	----------------



This face to be clean & free from marks after anodising.

FIRST ANGLE PROJECTION

Designed by L Clark	Description Datamet L Front Panel	Date 24/04/2013	Scale 1:2
<b>METCASE ENCLOSURES</b> 15 Brunel Way, Segensworth East, Fareham, Hampshire, UK. PO15 5TX Tel: +44 (0)1489 583858 Email: metcase@okw.co.uk		<b>METcase™</b> www.metcase.com Part Number <b>M5800040</b>	
		Issue <b>1</b>	Sheet <b>1 / 1</b>

© OKW Enclosures Ltd (Date as shown). This drawing contains proprietary information of OKW Enclosures Ltd and is tendered subject to the following conditions. The information be retained in confidence, not be reproduced or copied, and not be used or incorporated in any product, unless permission is obtained in writing from OKW Enclosures Ltd.