



Represented worldwide in more than 40 countries



**HARTMANN**

A Phoenix Mecano Company

Hartmann Codier GmbH • Industriestraße 3 • 91330 Baiersdorf  
Tel: +49 (0)9133/7793-0 • Fax: +49 (0)9133/7793-36  
email: info@hartmann-codier.de

[WWW.HARTMANN-CODIER.DE](http://WWW.HARTMANN-CODIER.DE)

# DH1... Thumb Wheel Switch

- ▷ Thumb wheel switch with or without operating crown
- ▷ For right or left hand side PCBs
- ▷ Diameter 13mm
- ▷ Width 6mm
- ▷ SMT-Pins
- ▷ More Versions on request

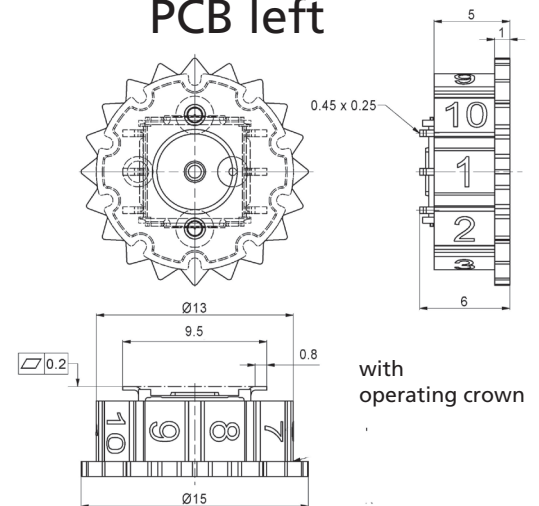


## Technical Data

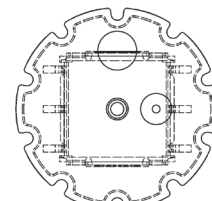
## Dimensions

Pin connection	3+3, center C-contact
Perm. ambient temperature	-50...+125°C
Perm. storage temperature	-55...+135°C
Torque	1,2Ncm ±0,2
Mech. lifetime	min. 25 000 steps
Positions/rotation	10
Humidity	21 days at 40°C, 93%RH
Operating voltage	≤42V
Contact load, static	≤0,4A
Contact load, dynamic	≤0,1A
Minimum load	1µA 20mV DC
Test voltage	250V 50Hz/1min
Contact resistance	<80mΩ
Insulation resistance	>100MΩ
Reflow soldering max.	10s/260°C
Packing	Tape & Reel

### PCB left

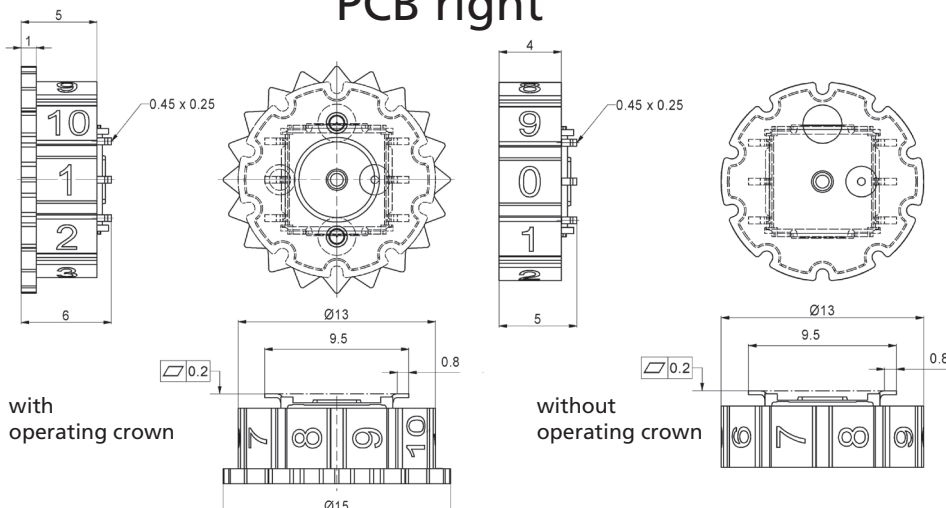


with operating crown



without operating crown

### PCB right



with operating crown

without operating crown

999989  
Version 4



Represented worldwide in more than 40 countries



**HARTMANN**

Hartmann Codier GmbH • Industriestraße 3 • 91330 Baiersdorf  
Tel: +49 (0)9133/7793-0 • Fax: +49 (0)9133/7793-36  
email: info@hartmann-codier.de

A Phoenix Mecano Company

[WWW.HARTMANN-CODIER.DE](http://WWW.HARTMANN-CODIER.DE)

# DH1... Thumb Wheel Switch

## 1 DH1 2 3 4 5

## 2 Codes BCD 10 Positions Code: DH1 **01A** 3 4 5

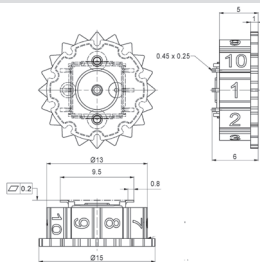
BCD		Anschlußpins / Terminals				
		C	1	2	4	8
0	●					1
1	●					2
2	●					3
3	●					4
4	●					5
5	●					6
6	●					7
7	●					8
8	●					9
9	●					10

left

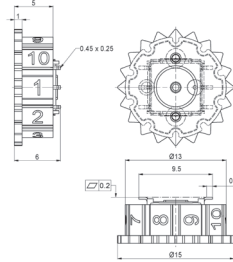
BCD		Anschlußpins / Terminals				
		C	1	2	4	8
0	●					1
1	●					2
2	●					3
3	●					4
4	●					5
5	●					6
6	●					7
7	●					8
8	●					9
9	●					10

right

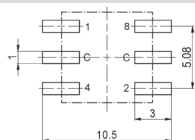
## 3 For PCB Left Code: DH1 2 **L** 4 5



## Right Code: DH1 2 **R** 4 5



## 4 Contact pins SMT Code: DH1 2 3 **SMT** 5



## 5 Colors, Printing, other Versions

Thumb wheel black, printing white, 1-10, with crown	Code: DH1 2 3 4 <b>001</b>
Thumb wheel black, printing white, 1-10, without crown	Code: DH1 2 3 4 <b>002</b>
Thumb wheel black, printing white, 0-9, with crown	Code: DH1 2 3 4 <b>003</b>
Thumb wheel black, printing white, 0-9, without crown	Code: DH1 2 3 4 <b>004</b>