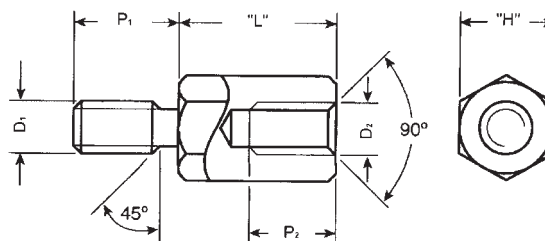
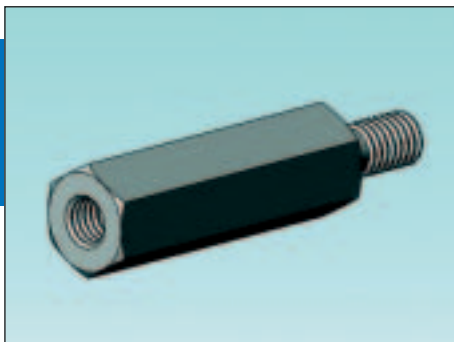


# BEFESTIGUNGSTECHNIK FÜR LEITERPLATTEN

A



## HTSBG-2

ABSTANDBOLZEN INNEN-/AUSSENGEWINDE  
MESSING

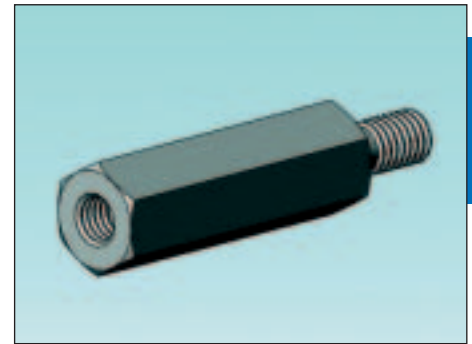
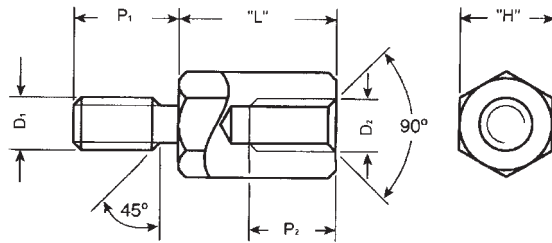
Artikel Nr.	Gewinde "D1" & "D2"		"L" mm	"H" mm	"P1" mm	"P2" mm
HTSBG-M2-L-4-2	M2	M2	5.0 / 6.0	4.0	5.0	3.0
			8.0			5.0
			10.0 / 12.0 / 15.0 / 18.0 / 20.0 / 25.0 / 30.0 / 35.0 / 40.0 / 45.0 / 50.0			6.0
HTSBG-M2.5-L-4-2	M2.5	M2.5	5.0 / 6.0	4.0	6.0	3.0
			8.0			5.0
			10.0			6.0
			12.0			7.0
			15.0 / 18.0 / 20.0 / 25.0 / 30.0 / 35.0 / 40.0 / 45.0 / 50.0			10.0
HTSBG-M2.5-L-5-2	M2.5	M2.5	5.0 / 6.0	5.0	6.0	3.0
			8.0			5.0
			10.0			6.0
			12.0			7.0
			15.0 / 18.0 / 20.0 / 25.0 / 30.0 / 35.0 / 40.0 / 45.0 / 50.0 / 55.0 / 60.0			10.0
HTSBG-M3-L-5-2	M3	M3	5.0 / 6.0	5.0	6.0	3.0
			8.0			5.0
			10.0			6.0
			12.0			7.0
			15.0 / 18.0 / 20.0 / 25.0 / 30.0 / 35.0 / 40.0 / 45.0 / 50.0 / 55.0 / 60.0			10.0
HTSBG-M3-L-5-2-L	M3	M3	5.0 / 6.0	5.0	8.0	3.0
			8.0			5.0
			10.0			7.0
			12.0			8.0
			15.0 / 18.0 / 20.0 / 25.0 / 30.0 / 35.0 / 40.0 / 45.0 / 50.0 / 55.0 / 60.0			10.0
HTSBG-M3-L-5.5-2	M3	M3	5.0 / 6.0	5.5	6.0	3.0
			8.0			5.0
			10.0			7.0
			12.0			8.0
			15.0 / 18.0 / 20.0 / 25.0 / 30.0 / 35.0 / 40.0 / 45.0 / 50.0 / 55.0 / 60.0 / 65.0 / 70.0			10.0
HTSBG-M3-L-5.5-2-L	M3	M3	5.0 / 6.0	5.5	8.0	3.0
			8.0			5.0
			10.0			7.0
			12.0			8.0
			15.0 / 18.0 / 20.0 / 25.0 / 30.0 / 35.0 / 40.0 / 45.0 / 50.0 / 55.0 / 60.0 / 65.0 / 70.0			10.0

Bestellinfo:

HTSBG M3 L 5.5 2  
 Artikel Gewinde Länge SW Typ

Material: Messing CuZn39Pb3  
 Oberflächenbehandlung: G3 E vernickelt nach DIN 267  
 Mindestzugfestigkeit: 430 N / mm<sup>2</sup>  
 Fertigungstoleranz: ± 0,1 mm  
 VPE: 100 Stk.

# BEFESTIGUNGSTECHNIK FÜR LEITERPLATTEN



A

## HTSBG-2

ABSTANDSBOLZEN INNEN-/AUSSENGEWINDE  
MESSING

Artikel Nr.	Gewinde "D1" & "D2"		"L" mm	"H" mm	"P1" mm	"P2" mm
HTSBG-M4-L-7-2	M4	M4	5.0 / 6.0	7.0	8.0	3.0
			8.0			5.0
			10.0			7.0
			12.0			8.0
			15.0 / 18.0 / 20.0 / 25.0 / 30.0 / 35.0 / 40.0 / 45.0 / 50.0 / 55.0 / 60.0			10.0
			65.0 / 70.0 / 75.0 / 80.0 / 85.0 / 90.0 / 95.0 / 100.0			
HTSBG-M5-L-8-2	M5	M5	5.0 / 6.0	8.0	8.0	3.0
			8.0			5.0
			10.0			7.0
			12.0			8.0
			15.0 / 18.0 / 20.0 / 25.0 / 30.0 / 35.0 / 40.0 / 45.0 / 50.0 / 55.0 / 60.0			10.0
			65.0 / 70.0 / 75.0 / 80.0 / 85.0 / 90.0 / 95.0 / 100.0			
HTSBG-M6-L-10-2	M6	M6	5.0 / 6.0	10.0	10.0	3.0
			8.0			5.0
			10.0			7.0
			12.0			8.0
			15.0 / 18.0 / 20.0 / 25.0 / 30.0 / 35.0 / 40.0 / 45.0 / 50.0 / 55.0 / 60.0			10.0
			65.0 / 70.0 / 75.0 / 80.0 / 85.0 / 90.0 / 95.0 / 100.0			

Material: Messing CuZn39Pb3  
 Oberflächenbehandlung: G3 E vernickelt nach DIN 267 Bestellinfo:  
 Mindestzugfestigkeit: 430 N / mm<sup>2</sup>  
 Fertigungstoleranz: ± 0,1 mm  
 VPE: 100 Stk.

HTSBG	M3	L	5.5	2
Artikel	Gewinde	Länge	SW	Typ