

Smoke Alarm

**Mains Powered 230V~
Alkaline Battery Back-up**

Key Features

- Remote Test + Control – Wired & Wireless
- Integrated Piezo-electrical sounder
- Easi-fit base
- Insect screen
- Test/Silence button
- Memory
- Low battery Indication
- Hardwire Interconnect
- Wireless Interconnect when fitted with Ei168RC
- Kitemarked to BS EN14604:2005
- 5 year guarantee

Product Description

The Ei146RC is an Optical Smoke Alarm with 230V AC mains power supply and replaceable Alkaline battery back-up.

The Ei140RC family of Alarms have been designed for households and similar residential applications including HMO's (Houses in multiple occupation)

The Ei146RC is supplied with the Easi-fit base to facilitate quick and simple installation, combined with simple detector head removal and replacement. The Easi-fit base automatically connects both mains power and battery as the detector head slides on.

The Ei146RC may operate as a standalone Alarm or may be interconnected to other Alarms via a wired or wireless system. For a wireless system each Alarm must be fitted with an Ei168RC RadiolINK base. When interconnected all alarms in the system will sound if a fire is detected.

The Alarm is fitted with a Test / Silence button to facilitate frequent testing of your alarm and system. The Silence function allows the Alarm / System to be silenced in the case of a false / nuisance alarm, e.g. cooking fumes.

The Ei146RC is fitted with a mains "power on" green LED indicator and yellow LED indicator for fault conditions.

The memory feature allows an alarm that has previously activated to be easily identified.



**Remote Test
+ Control**

Technical Specification

| | |
|--------------------------|---|
| Supply Voltage: | 230V AC, 50Hz |
| Battery back-up: | 9V Alkaline Replaceable |
| Sound Level: | 85 dB(A) at 3 meters |
| Temperature: | Operating - 0 to 40°C Storage - 0 to 35°C (in a dry area) |
| Humidity Range: | 15% to 95% Relative Humidity |
| Button Test: | Simulates the effect of smoke and checks chamber, electronics and horn |
| Self-Test: | Smoke Chamber is automatically tested every 40 seconds and unit beeps (without red LED flash) if it is degraded |
| Insect Screen: | Prevents insects or debris entering chamber (1.00mm mesh size) |
| Plastic material: | UL94V0 flame retardant |
| Dimensions: | Product - 150mm x 55mm Package - 155mm x 155mm x 65mm |
| Weight: | 410g (Incl. Pkg.) |
| Warranty: | 5 year (limited) warranty |
| Approvals: | Kitemarked to BS EN14604:2005 CE certified |

Specifications are subject to change

Ei140RC Family

| Model No. | Sensor | Location |
|-----------|------------|---------------------------------|
| Ei141RC | Ionisation | Bedrooms |
| Ei144RC | Heat | Kitchens, Garages |
| Ei146RC | Optical | Hallways, Landing, Living Rooms |

Ei140RC Accessories

| Model No. | Description |
|-----------|---|
| Ei168RC | RadioLINK Base for wireless interconnection |
| Ei450 | Remote Alarm Controller for wireless system |
| Ei1529RC | Remote Alarm Switch for wired system |

Remote Test + Control

Test + Control your RadioliNK System

For simple intuitive testing and control of your RadioliNK Alarm System, fit an Ei450 Alarm Controller

- ▶ Completely wireless
- ▶ Battery powered (10yr life)
- ▶ Three functions:
 - **Test:** Test alarms
 - **Locate:** Identify triggered alarms
 - **Silence:** Silence alarms



Ei450



**Single Button
Test + Control**

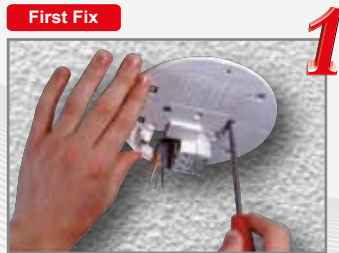
Test + Control your Hard-wired System

To test and control your Hard-wired Alarm System, fit an Ei1529RC Control Switch

- ▶ Hard-wired
- ▶ Three functions:
 - **Test:** Test alarms
 - **Locate:** Identify triggered alarms
 - **Silence:** Silence alarms



Ei1529RC



Bring wiring through and screw easi-fit base to the ceiling



Wire to the built-in terminal block and clip on wiring cover



Slide on alarm