

Fellowes

Office Laminators

Jupiter (A3)



Please read these instructions before use.

Lire ces instructions avant utilisation.

Lea estas instrucciones antes del uso.

Bitte lesen Sie diese Anleitungen sorgfältig, bevor Sie das Gerät benutzen.

Prima dell'uso, si raccomanda di leggere questo manuale di istruzioni.

Gelieve deze instructies te lezen vóór gebruik.

Läs dessa instruktioner före användningen.

Læs venligst denne vejledning før anvendelse.

Lue nämä ohjeet ennen käyttöä.

Vennligst les nøye igjennom denne bruksanvisningen før bruk.

Przed użyciem proszę przeczytać instrukcję.

Перед началом эксплуатации обязательно прочтите данную инструкцию.

Παρακαλείσθε να διαβάσετε αυτές τις οδηγίες πριν χρησιμοποιήσετε το προϊόν.

Kullanmadan önce lütfen bu talimatları okuyun.

Před použitím si přečtěte tyto pokyny.

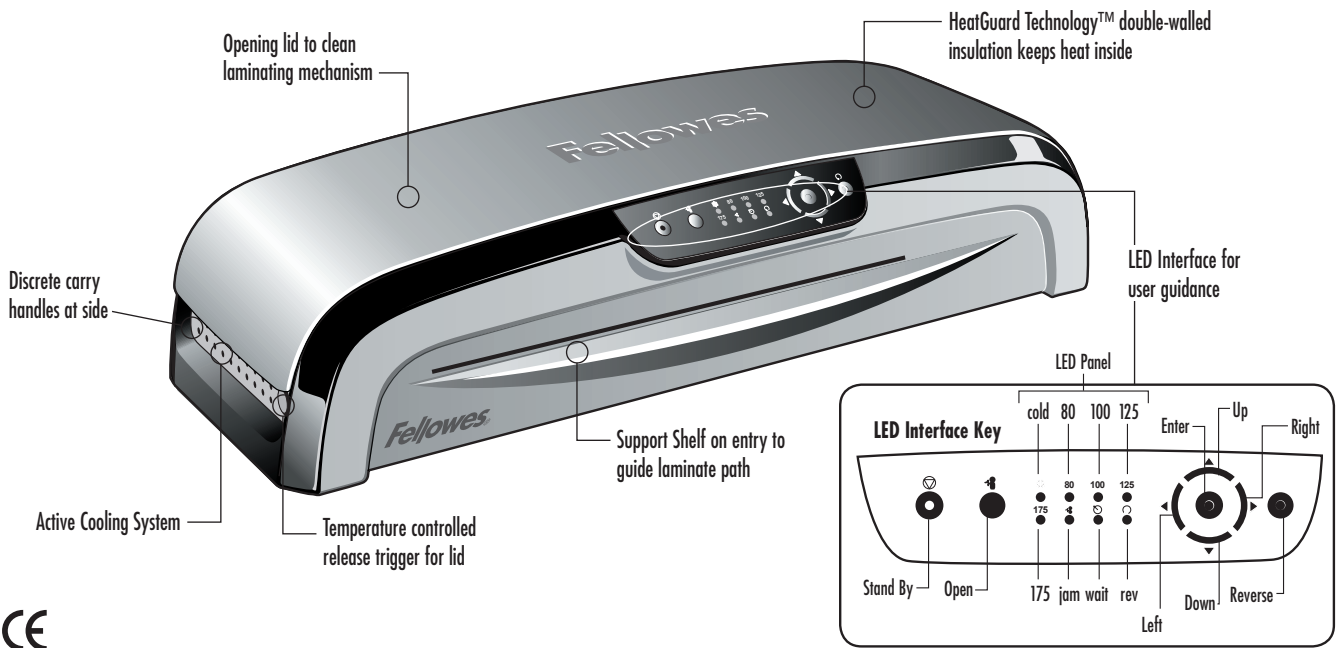
Pred použitím si prečítajte tieto pokyny.

Használat előtt kérjük, olvassa el az alábbi utasításokat.

Leia estas instruções antes da utilização.

fellowes.com

ENGLISH



CAPABILITIES

Pouch Thickness	75-175 microns
Estimated Heat-Up Time	4 Minutes
Approximate Cool-Down Time	60 Minutes
Lamination Speed	50 cm/Minute
Maximum Width	330 mm
Voltage	220 - 240V~
Frequency	50/60 Hz

Laminating capacity – 75 to 175 micron hot laminating pouches per side

Up to A3 width (330mm)

1000 Watt

Dimensions: 555mm (w) 245mm (d) 120mm (h)

Max document thickness 3mm

IMPORTANT SAFETY INSTRUCTIONS — Please Read Before Using!

WARNING

- The socket-outlet must be installed near the equipment and be easily accessible.
- To prevent electrical shock, do NOT use laminator close to water and do NOT spill water on laminator, electric cord, or wall socket. ⚡
- Do not leave electric cord in contact with a warm surface.
- Do not leave electric cord hanging from a cupboard or shelf.
- Do not use laminator if electric cord is damaged.
- Do not laminate metal objects.

CAUTION

- Only use pouches specifically designed for the lamination setting you intend to use.
- Always supervise children during laminator operation.
- Keep pets away from laminator while in use.
- Switch off and unplug laminator when not in use.
- Only open the laminator as explained under "Maintenance". Do not open or attempt to repair in any other way, as this could result in electric shock and will void your warranty. Contact Customer Service if you have questions. Please note the warranty does not apply in cases of abuse, mishandling or unauthorized repair.
- Please be careful of sharp edges and corners and residual heat when opening the laminator.

IMPORTANT SAFETY INFORMATION

This laminator is equipped with an Auto shut-off function. It will turn the laminator into stand-by mode, if it has not been used for over 60 minutes. To switch the laminator back on, simply press the stand-by button at the left of the front operating panel.

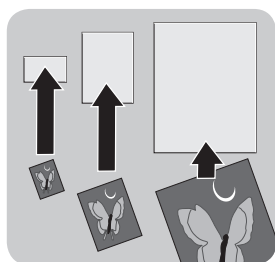
During lamination, the direction of the pouch can be reversed, if you are unsure about the progress of the lamination. To do so, press down the reverse key. This will eject the pouch back at the front entry.

TIPS

- Always put item in a pouch. Never laminate an empty pouch.
- Trim excess pouch material from around your item after laminating and cooling.
- Clean laminator rollers with Fellowes roller wipes (item #5703701) after 15-20 applications to guarantee optimum laminating results. For further details, please see "maintenance" section.
- Before laminating valuable items, do a test run with an item similar in size and thickness.
- Do not laminate heat-sensitive documents (i.e., tickets, ultrasounds, etc.).
- Use a dry-erase marker for writing on laminated pouches.

BEFORE YOU LAMINATE

Use Fellowes® brand pouches (Enhance80 – Protect175) for best results. Select correct pouch size for laminated item.

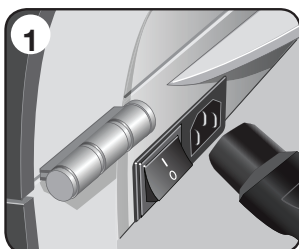


Position laminator so you have enough space to allow items to pass freely through the machine.

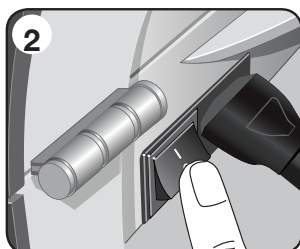


COLD LAMINATION STEPS

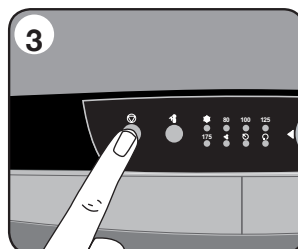
CAUTION: Only use self-adhesive pouches when laminating with a cold setting.



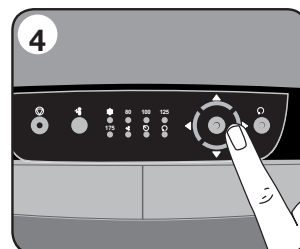
1. Please connect the laminator to the socket using the separate power cable supplied.



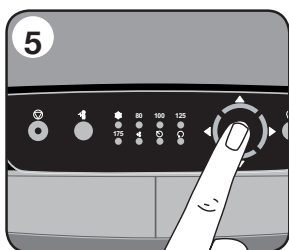
2. Switch laminator on with Power On / Off button at back of machine.



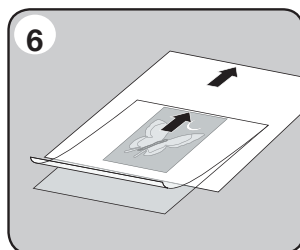
3. Press Stand-by button at left of front operating panel to switch laminator on.



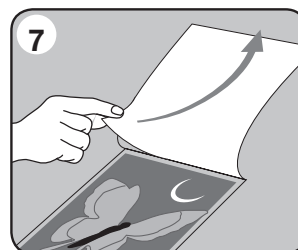
4. Use navigation keys to select setting for cold lamination.



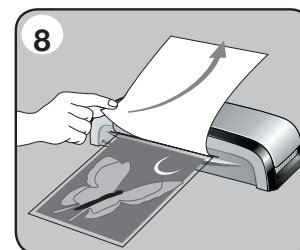
5. Confirm your selection by pressing "Enter" button in the middle of navigation keys. "Wait" LED (⏸) will stop flashing and beep will sound when laminator has finished temperature adjustment.



6. Centre item on clear side against sealed edge; documents cannot be repositioned once laminated.



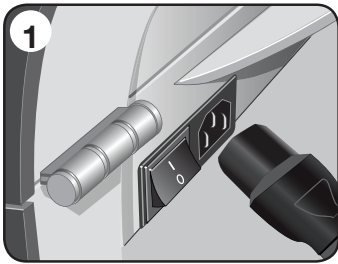
7. Peel a small part of the protective sheet away from document.



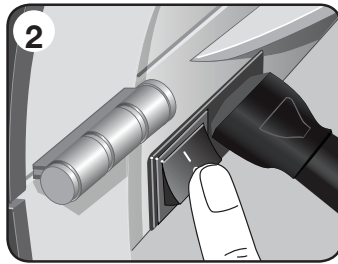
8. When the "wait" LED (⏸) stops flashing, place pouch, sealed edge first, into laminator entry. Keep pouch straight and use the edge guide to centre it. Continue peeling the protective sheet away.

ENGLISH

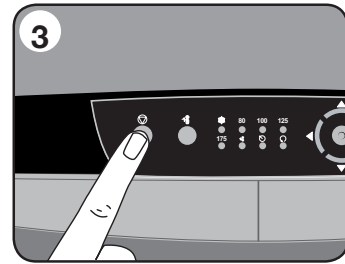
HOT LAMINATION STEPS



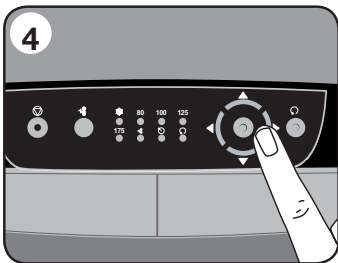
1. Please connect the laminator to the socket using the separate power cable supplied.



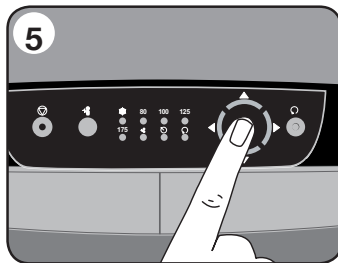
2. Switch laminator on with Power On / Off button at back of machine.



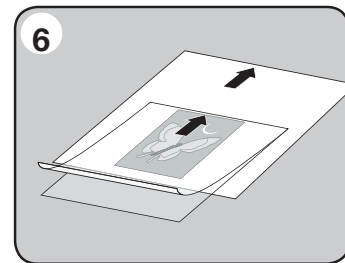
3. Press Stand-by button at left of front operating panel to switch laminator on.



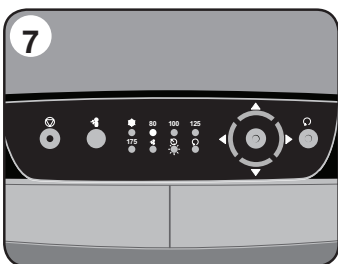
4. Use navigation keys to select setting for the hot lamination pouch thickness (80-175 micron) you wish to laminate.



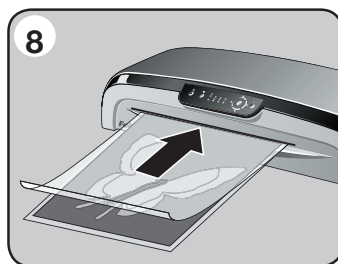
5. Confirm your selection by pressing "Enter" button in the middle of navigation keys. "Wait" LED (⏸) will begin flashing and laminator will take a few minutes to reach required temperature.



6. While laminator is warming up, please prepare item you wish to laminate. Place the item inside the pouch and center it against the sealed edge of the pouch. To prevent jamming, use a carrier sheet when item is smaller than the pouch.



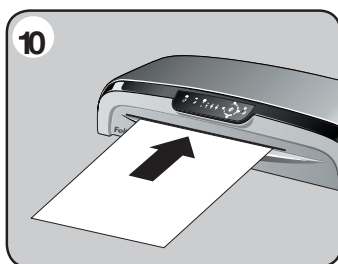
7. "Wait" LED (⏸) will stop flashing and acoustic bleep signal will sound when machine is ready to laminate selected pouch thickness.



8. Place pouch, sealed edge first, into laminator entry. Keep pouch straight and use the edge guide to centre it.



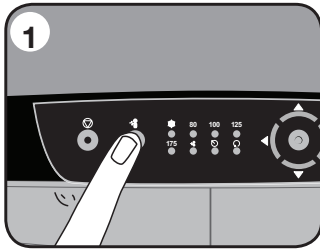
9. To prevent jamming, immediately remove laminated item from back of machine. Let item cool on flat surface for several seconds.



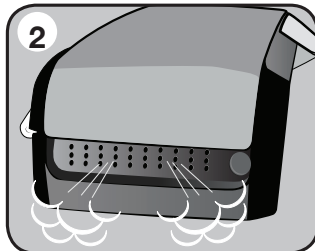
10. Before switching off laminator, feed empty cleaning/carrier sheet through machine to clean unit.

MAINTENANCE - Unique Easi-Access technology

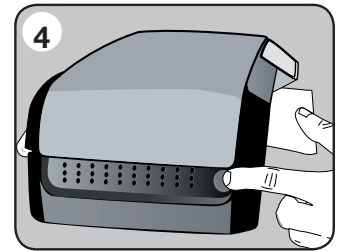
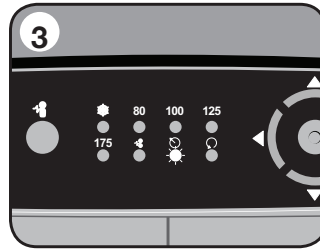
This laminator is equipped with the unique Easi-Access technology for easy maintenance. This allows the user to open the laminator for maintenance, just like a photocopier.



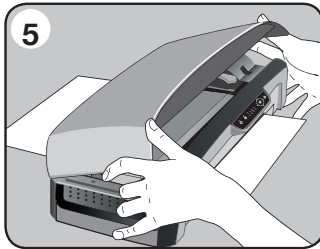
1. To open the laminator, please press the "Open" (⚡) button as shown in the illustration. The red Open light will illuminate.



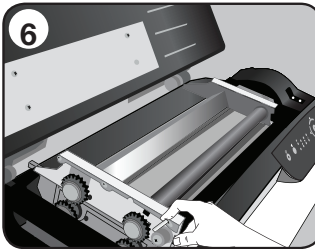
2. If machine is hot, fan will turn on to cool the machine down to safe handling temperature inside. During this time the "Wait" symbol will flash and cover will remain locked.



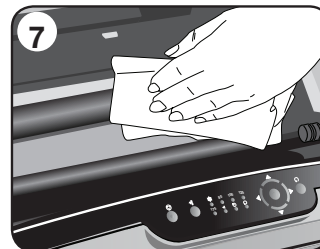
4. Press the silver buttons on both sides of the machine to activate the Easi-Access (The laminator needs to be switched on to allow the active temperature control to work).



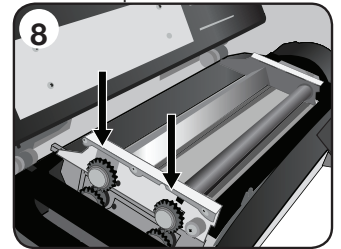
5. Open the lid with both hands. You are now able to clean the inside of the laminator and carefully remove any residual glue or other items.



6. For further maintenance, the rollers can be released by experienced users. Press cam levers to release the rollers.



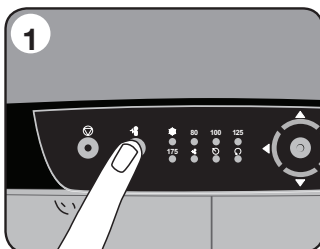
7. To clean residue off laminator rollers, please only use Fellowes Laminating Roller wipes (item No 5703701) as explained in their product instructions.



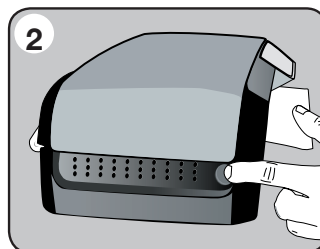
8. Please remember to re-secure the rollers before closing cover to ensure safe operation.

When laminator is opened, power to internal parts is isolated, so that user is not in danger of electric shock.

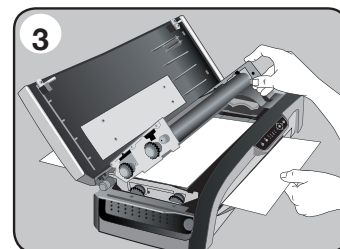
TROUBLESHOOTING



Problem
Ready Light does not go on after extended time



Cause
Laminator is in a hot, humid area.



Solution
Move laminator to a cool dry area.

Pouch did not completely adhere to item

Laminated item may be too thick.

Pass through laminator a second time.

Jamming

No item in pouch
Manually cut out pouch used
Pouch was not used.
Pouch was not centred or straight when fed through Pouch/Document Entry.
Glue and residue left on laminating rollers.

All our laminators have been designed to operate jam-free. In the unlikely event of a jam occurring, please press the "open" (⚡) button and wait for the wait (⌚) light to stop flashing.

The laminator can be opened to remove incorrectly inserted items as described under maintenance. Please ensure that you follow the described steps.

Gently pull on the jammed material to release it.

Always put item in a pouch.

Align sealed edge with Pouch/Document Entry. Use guide on machine to centre.

Clean residues off rollers using Fellowes Laminating Roller wipes, see "maintenance" section.

Make sure that not residue is left on the rollers and use cleaning sheet before laminating.

Need Help?

Please call our experts at Customer Service. You'll find the numbers for your nearest Service Centre on the back cover of this booklet.

LIMITED WARRANTY

Fellowes warrants all parts of the laminator to be free of defects in material and workmanship for 2 years from the date of purchase by the original consumer. If any part is found to be defective during the warranty period, your sole and exclusive remedy will be repair or replacement, at Fellowes' option and expense, of the defective part. This warranty does not apply in cases of abuse, mishandling or unauthorized repair. ANY IMPLIED WARRANTY, INCLUDING THAT OF MERCHANTABILITY OR FITNESS FOR A PARTICULAR PURPOSE, IS HEREBY LIMITED IN DURATION

TO THE APPROPRIATE WARRANTY PERIOD SET FORTH ABOVE. IN NO EVENT SHALL FELLOWES BE LIABLE FOR ANY CONSEQUENTIAL OR INCIDENTAL DAMAGES ATTRIBUTABLE TO THIS PRODUCT. This warranty gives you specific legal rights. You may have other legal rights that vary from this warranty. The duration, terms and conditions of this warranty are valid world-wide, except where different limitations, restrictions or conditions may be required by local law. For more details or to obtain services under this warranty, please contact us or your dealer.

English

This product is classified as Electrical and Electronic Equipment. Should the time come for you to dispose of this product please ensure that you do so in accordance with the European Waste of Electrical and Electronic Equipment (WEEE) Directive and in compliance with local laws relating to this directive.

For more information on the WEEE Directive please visit www.fellowesinternational.com/WEEE

French

Ce produit est classé dans la catégorie « Équipement électrique et électronique ». Lorsque vous déciderez de vous en débarrasser, assurez-vous d'être en parfaite conformité avec la directive européenne relative à la gestion des déchets d'équipements électriques et électroniques (DEEE), et avec les lois de votre pays liées à cette directive.

Pour obtenir des plus amples informations sur cette directive, rendez-vous sur www.fellowesinternational.com/WEEE

Spanish

Se clasifica este producto como Equipamiento Eléctrico y Electrónico. Si llegase el momento de deshacerse de este producto, asegúrese que lo hace cumpliendo la Directiva Europea sobre Residuos de Equipamiento Eléctrico y Electrónico (Waste of Electrical and Electronic Equipment, WEEE) y las leyes locales relacionadas con esta directiva.

Para más información acerca de la Directiva WEEE, visite www.fellowesinternational.com/WEEE

German

Dieses Produkt ist als Elektro- und Elektronikgerät klassifiziert. Wenn Sie dieses Gerät eines Tages entsorgen müssen, stellen Sie bitte sicher, dass Sie dies gemäß der Europäischen Richtlinie zu Sammlung und Recycling von Elektro- und Elektronikgeräten (WEEE) und in Übereinstimmung mit der lokalen Gesetzgebung in bezug auf diese Richtlinie tun.

Mehr Informationen zur WEEE-Richtlinie finden Sie unter: www.fellowesinternational.com/WEEE

Italian

Questo prodotto è classificato come Dispositivo Elettrico ed Elettronico. Al momento dello smaltimento di questo prodotto, effettuarlo in conformità alla Direttiva Europea sullo Smaltimento dei Dispositivi Elettrici ed Elettronici (WEEE) e alle leggi locali ad essa correlate.

Per ulteriori informazioni sulla Direttiva RAEE, visitare il sito www.fellowesinternational.com/WEEE

Dutch

Dit product is geclassificeerd als een elektrisch en elektronisch apparaat. Indien u besluit zich te ontdoen van dit product, zorg dan a.u.b. dat dit gebeurt in overeenstemming met de Europese richtlijn inzake afval van elektrische en elektronische apparaten (AEEA) en conform de lokale wetgeving met betrekking tot deze richtlijn.

Voor meer informatie over de AEEA-richtlijn kunt u terecht op www.fellowesinternational.com/WEEE

Swedish

Denna produkt är klassificerad som elektrisk och elektronisk utrustning. När det att dags att omhänderta produkten för avfallshantering se då till att detta utförs i enlighet med WEEE-direktivet om hantering av elektrisk och elektronisk utrustning och i enlighet med lokala bestämmelser relaterade till detta direktiv.

För mer information om WEEE-direktivet besök gärna www.fellowesinternational.com/WEEE

Danish

Denne produkt er klassificeret som elektrisk og elektronisk udstyr. Når tiden er inde til at bortskaffe denne produkt, bedes De sørge for at gøre dette i overensstemmelse med det Europæiske direktiv om affald af elektrisk og elektronisk udstyr (WEEE) og i henhold til de lokale love, der relaterer til dette direktiv.

For yderligere oplysninger om WEEE-direktivet bedes De besøge www.fellowesinternational.com/WEEE

Finnish

Tämä tuote luokitellaan sähkö- ja elektroniikkalaitteeksi. Kun tuote poistetaan käytöstä, se on hävitettävä sähkö- ja elektroniikkalaiteromusta annetun EY:n direktiivin (WEEE) ja direktiiviin liittyvän kansallisen lainsäädännön mukaisesti.

Lisätietoja WEEE-direktiivistä on osoitteessa www.fellowesinternational.com/WEEE

Norwegian

Dette produktet klassifiseres som elektrisk og elektronisk utstyr. Hvis du har tenkt å bortskaffe dette produktet, vennligst se til at du gjør dette i overensstemmelse med det europeiske WEEE-direktivet (Waste of Electrical and Electronic Equipment) og ifølge lokalt lovverk forbundet med dette direktivet.

For mer informasjon om WEEE-direktivet, vennligst besøk www.fellowesinternational.com/WEEE

Polish

Ten produkt został zaklasyfikowany do grupy urządzeń elektrycznych i elektronicznych. Zużyty sprzęt w Państwie posiadaniu należy usuwać zgodnie z Europejską Dyrektywą w sprawie zużytego sprzętu elektrycznego i elektronicznego (WEEE) oraz z lokalnie obowiązującym prawem.

Więcej informacji znajdziecie Państwo na stronie www.fellowesinternational.com/WEEE

Russian

Данное изделие классифицировано как электрическое и электронное оборудование. Когда придет время утилизировать данное изделие, пожалуйста, обеспечьте соблюдение Директивы Евросоюза об утилизации отходов электрического и электронного оборудования (Waste of Electrical and Electronic Equipment, WEEE) и местных законов, связанных с ней.

Для получения дополнительной информации о директиве WEEE, пожалуйста, посетите веб-сайт www.fellowesinternational.com/WEEE

Greek

Αυτό το προϊόν είναι ταξινομημένο ως Ηλεκτρικός και Ηλεκτρονικός Εξοπλισμός. Σε περίπτωση που θέλετε ν' απορρίψετε αυτό το προϊόν, παρακαλείσθε να βεβαιωθείτε ότι κάνετε την απόρριψη σύμφωνα με την Ευρωπαϊκή Οδηγία σχετικά με τα Απόβλητα Ηλεκτρικού και Ηλεκτρονικού Εξοπλισμού (WEEE) και σύμφωνα με τους τοπικούς νόμους που σχετίζονται μ' αυτή την οδηγία.

Για περισσότερες πληροφορίες σχετικά με την Οδηγία WEEE, παρακαλείσθε να επισκεφτείτε την ιστοσελίδα www.fellowesinternational.com/WEEE

Turkish

Bu ürün, Elektriksel ve Elektronik Ekipman olarak sınıflandırılmıştır. Bu ürünü bertaraf etme zamanı geldiğinde, lütfen bunun Avrupa Elektriksel ve Elektronik Ekipmanların Atılması (WEEE) Yönetmeliği ve bu yönetmekle ilgili yerel kanunlar uyarınca yapıldığından emin olun.

WEEE Yönetmeliği hakkında daha fazla bilgi için lütfen www.fellowesinternational.com/WEEE sitesini ziyaret edin

Czech

Tento výrobek je klasifikován jako elektrické a elektronické zařízení. Po skončení jeho životnosti zajistěte jeho likvidaci v souladu se Směrnicí 2002/96/ES o odpadu z elektrických a elektronických zařízeních (OEEZ) a v souladu s místními předpisy, které s touto směrnicí souvisí.

Více informací o směrnici OEEZ najdete na stránkách www.fellowesinternational.com/WEEE

Slovak

Tento produkt je klasifikovaný ako elektrické a elektronické zariadenie. Ak nastane čas zlikvidovať tento produkt, zabezpečte, prosím, aby ste tak urobili v súlade s Európskou smernicou o odpade z elektrických a elektronických zariadeniach (WEEE) a v zhode s miestnymi zákonmi vzťahujúcimi sa na túto smernicu.

Podrobnejšie informácie o Smernici WEEE nájdete na www.fellowesinternational.com/WEEE

Hungarian

Ez a termék Elektromos és elektronikus berendezés besorolású. Ha eljönne az idő, amikor ki kell dobni a terméket, akkor kérjük, gondoskodjon arról, hogy ezt az Európai elektromos és elektronikus berendezések hulladékáról szóló (WEEE) irányelv szerint tegye, megfelelően az irányelvhez kapcsolódó helyi törvényeknek is.

A WEEE Irányelvre vonatkozó további információért kérjük, keresse fel a www.fellowesinternational.com/WEEE internetes címet

Portuguese

Este produto está classificado como Equipamento Eléctrico e Electrónico. Quando chegar a altura de eliminar este produto, certifique-se de que o faz em conformidade com a Directiva relativa a Resíduos de Equipamentos Eléctricos e Electrónicos (REEE) e em observância da legislação local relativa a esta directiva.

Para obter mais informações sobre a Directiva relativa a Resíduos de Equipamentos Eléctricos e Electrónicos (REEE), visite o endereço www.fellowesinternational.com/WEEE



Declaration of Conformity Useful Phone Numbers

Declaration of Conformity

Fellowes Manufacturing Company

Yorkshire Way, West Moor Park, Doncaster, South Yorkshire, DN3 3FB, England declares that the product Model Jupiter conforms with the requirements of (RoHS) the Restriction of Hazardous Substances Directive 2002/95/EC. The Low Voltage Directive 72/73/EEC as amended by directive 92/68/EEC. The Electromagnetic Compatibility Directive 89/336/EEC as amended by directives 92/31/EEC & 96/68/EEC. And the following Harmonised European Normes EN standards and IEC standards.

Information Technology Equipment: EN-60950-1 2001 / IEC-60950-1 2001

EMC: EN-55014-1 / A2 : 2002 EN-55014-2 / A1 : 2001 EN-61000-3-2 : 2000 EN-61000-3-3 / A1 : 2001

Itasca, Illinois, USA
June 30, 2006

James Fellowes
James Fellowes

Help Line

Australia	+ 1-800-33-11-77	México	+ 1-800-234-1185
Canada	+ 1-800-665-4339	United States	+ 1-800-955-0959
Europe	00-800-1810-1810		

Fellowes

Australia	+ 61-3-8336-9700	Japan	+ 81-(0)-3-5496-2401
Benelux	+ 31-(0)-76-523-2090	Korea	+ 82-2-3462-2884
Canada	+ 1-905-475-6320	Malaysia	+ 60-(0)-35122-1231
Deutschland	+ 49-(0)-5131-49770	Polska	+ 48-(0)-22-771-47-40
España	+ 34-91-748-05-01	Singapore	+ 65-6221-3811
France	+ 33-(0)-1-30-06-86-80	United Kingdom	+ 44-(0)-1302-836836
Italia	+ 39-071-730041	United States	+ 1-630-893-1600



1789 Norwood Avenue, Itasca, Illinois 60143-1095 • USA • 630-893-1600

fellowes.com

Australia	Canada	Deutschland	France	Japan	Polska	United Kingdom
Benelux	China	España	Italia	Korea	Singapore	United States