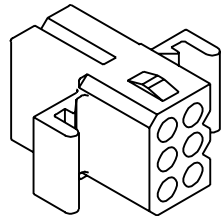
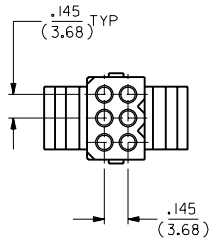
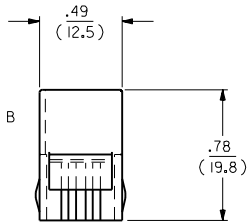
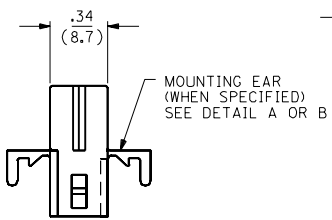
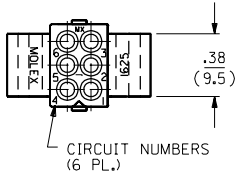
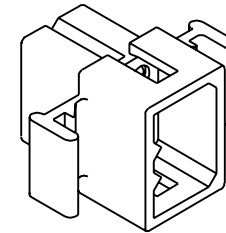
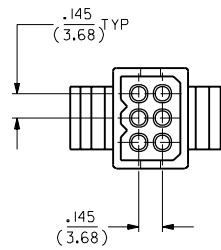
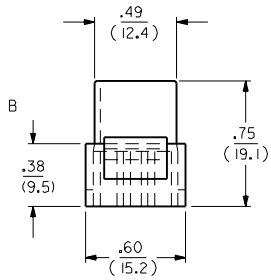
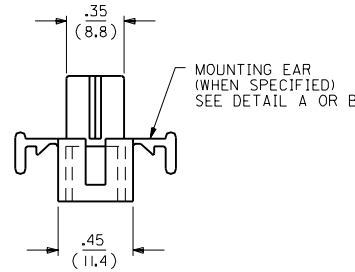
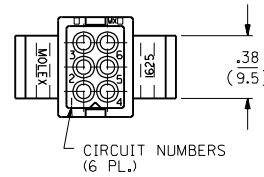


RECEPTACLE



SHOWN WITH STANDARD EAR

PLUG



SHOWN WITH STANDARD EAR

H2	REVISED	LCR/998-0126
	WANG	98-04-06
H1	ADD -R2 VERSION	
	PER ECN #UG 0093	
	7-31-95	RW
2	REVISED & REDRAWN	
1	ECR # U81740	
	07-22-88	KBW

REV. NO.	DATE
2	07/22/88

**REVISIONS**

UNLESS OTHERWISE SPECIFIED  
TOLERANCES ANGULAR ± 1/2°

INCH	METRIC
3 PLACE ± .010	---
2 PLACE ± .014	± 0.25
1 PLACE ---	± 0.35

DRAFT WHERE APPLICABLE MUST REMAIN WITHIN DIMENSIONS

PART NO. **.062/(1.57) HOUSINGS PLUG & RECEPTACLE 6 CIRCUIT .145/(3.68) @**

**MOLEX INCORPORATED** U.S.A. SHEET NO. 1 OF 2 DATE 07/22/88

FILE NAME: M1625-6.SDA

SCALE: 2:1

DRWG. NO. **SD-1625-6**

DRWG. BY: KBW

APP'D. BY: RAS

THIS DRAWING CONTAINS INFORMATION THAT IS PROPRIETARY TO MOLEX INC. AND SHOULD NOT BE USED WITHOUT WRITTEN PERMISSION.

