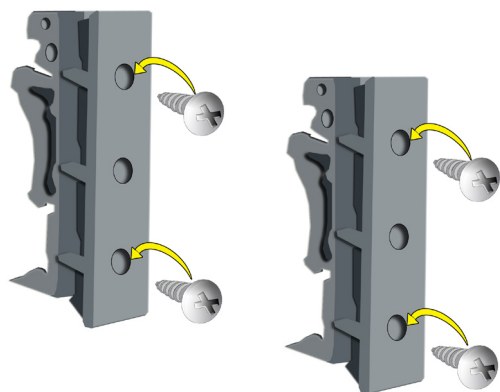


CONNECT, CONFIGURE, CONTROL YOUR SERIAL DEVICES



Range Description

Our DIN rail kits are compatible with multiple products in the Ethernet to Serial and USB to Serial ranges.

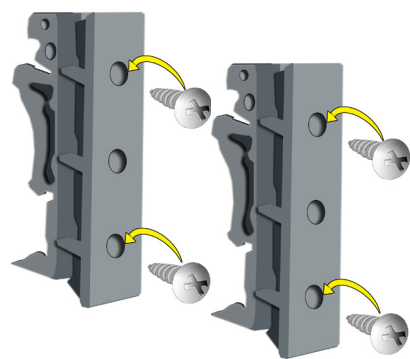
They can be order with the products as additional extras or on their own.

Features across the range

- RoHS Compliant
- UL Approved

DIN Rail Kits	Code	Compatible Cards
DIN-Rail Mounting Kit for 1&2 Port ES/UC	MK-048	ES-246 / ES-320 / ES-257 / ES-313 / ES-357 US-257 / US-313
Wall Mounting Kit For 4&8 Port ES/US	MK-059	ES-701 / ES-346 / ES-279 / ES-842 US-701 / US-346 / US-279 / US-842
Snap In DIN Clip Kit for 4&8 Port ES/US	MK-070	ES-701 / ES-346 / ES-279 / ES-842 US-701 / US-346 / US-279 / US-842

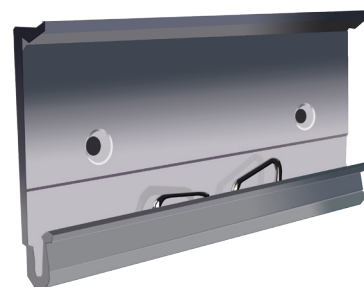
DIN-Rail Mounting Kit for 1&2 Port ES/UC



Wall Mounting Kit For 4&8 Port ES/US



Snap In DIN Clip Kit for 4&8 Port ES/US



Brainboxes Ranges



Ethernet to Serial

- Simple, instant cable replacement providing network integration
- Retain existing software applications on your network and connect from anywhere in the world
- Web-page configuration & RFC2217 compliant interface for non-Windows users
- LED status indication
- Autogating for automatic turn around of transmit enable in RS485 half duplex mode - hassle free operation
- Rugged metal enclosure with integrated wall mount



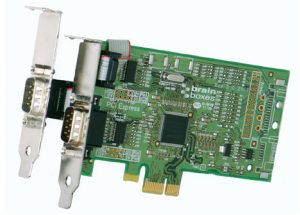
USB to Serial - Industrial

- High retention USB connector for secure connections
- Plug & Play
- Fit any USB port
- Fantastic, proven, robust Boost software for excellent application compatibility
- Rugged metal enclosure
- Includes 1m USB cable



USB to Serial - Desktop

- Powered by USB port - no external power supply required
- Plug & Play
- Fit any USB port
- Fantastic, proven, robust Boost software for excellent application compatibility
- Includes 0.25m USB cable (Type A plug to Type A receptacle)



PCI Express

- New generation of I/O expansion for PCs
- True serial connectivity for robust connection
- Plug & Play installation - auto configuration
- Works in x1, x4, x8 & x16 lane slots
- 1, 2, 3, 4 & 8 port RS232 & RS422/485 products
- LPT, Low Profile & Full Height versions available
- Opto Isolated versions available
- Powered EPOS included in range



ExpressCard

- New generation of I/O expansion for Notebooks
- Works in both 34 & 54mm slots
- User friendly form factor, convenient and rugged for notebook users
- High speed ExpressCards with excellent Plug-n-Play experience
- One & two port RS232 & RS422/485 products
- Also available with PCMCIA Adapter



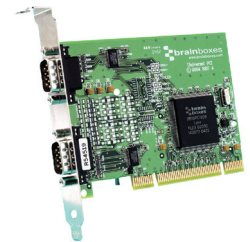
PCMCIA

- Use in tablet, laptop and Pocket PCs
- Robust connectivity
- Plug & Play Installation
- Option of secure or removable cable
- High speed connection up to 921,600 Baud
- One & two port RS-232 & RS422/485 products
- Also available in ExpressCard



Bluetooth

- True wireless cable replacement
- Class 1 & 2 devices - 10 to 30 metres
- RS232 Converter, on board software that also works with dumb devices
- Other Bluetooth products available:
 - ◆ Compact Flash
 - ◆ PCMCIA
 - ◆ Bluetooth RS232 Module
- Can be powered by device
- PC and Device connectivity



uPCI

- Use in PCs and Servers
- True serial connectivity provides robust connection
- Universal - both 3.3 & 5V slots
- 1, 2, 3, 4 & 8 port RS-232 & RS422/485 products
- LPT, Low Profile & Full Height versions available
- Opto Isolated versions available
- Powered EPOS included in range
- Also available in PCI Express

Connect, Configure, Control Your Serial Devices

Company & Product Accreditations



Our in-house Research and Development and Manufacturing facilities also provide "Custom Design, Perfect Fit" solutions.

Brainboxes Corporate Statement - From concept to customer your serial connectivity needs worldwide - solved!