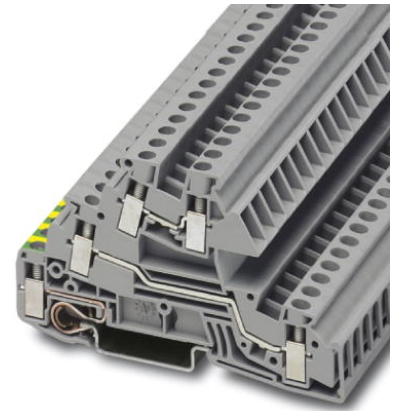



PIK 4-PE/L/L

Order No.: 2714022



Installation level terminal block, Screw connection, Cross section: 0.2 mm² - 4 mm², AWG: 24 - 12, Width: 6.2 mm, Color: gray, Mounting type: NS 35/7.5, NS 35/15

| Commercial data | |
|--------------------------|---|
| EAN | 4  017918 061272 |
| Pack | 50 |
| Customs tariff | 85369010 |
| Gross weight in pieces | 22.84 g |
| Country of Origin | GR |
| Catalog page information | Page 493 (CL1-2011) |

Product notes

WEEE/RoHS-compliant since: 01/01/2003



Please note that the data given here has been taken from the online catalog. For comprehensive information and data, please refer to the user documentation at <http://www.download.phoenixcontact.com>. The General Terms and Conditions of Use apply to Internet downloads.

Technical data

| General | |
|---|------|
| Number of levels | 3 |
| Number of connections | 5 |
| Color | gray |
| Insulating material | PA |
| Inflammability class according to UL 94 | V2 |

Dimensions

| | |
|------------------|---------|
| Width | 6.2 mm |
| Length | 88 mm |
| Height NS 35/7,5 | 51.5 mm |
| Height NS 35/15 | 59 mm |

Technical data

| | |
|----------------------------------|---|
| Maximum load current | 34 A (with 4 mm ² conductor cross section) |
| Rated surge voltage | 4 kV |
| Pollution degree | 3 |
| Surge voltage category | III |
| Insulating material group | I |
| Connection in acc. with standard | IEC 60947-7-1 / IEC 60947-7-2 |
| Nominal current I _N | 32 A |
| Nominal voltage U _N | 400 V (phase conductor/phase conductor) 250 V (phase conductor/PE) |
| Open side panel | ja |

Connection data

| | |
|--|----------------------|
| Conductor cross section solid min. | 0.2 mm ² |
| Conductor cross section solid max. | 4 mm ² |
| Conductor cross section stranded min. | 0.2 mm ² |
| Conductor cross section stranded max. | 4 mm ² |
| Conductor cross section AWG/kcmil min. | 24 |
| Conductor cross section AWG/kcmil max | 12 |
| Conductor cross section stranded, with ferrule without plastic sleeve min. | 0.25 mm ² |
| Conductor cross section stranded, with ferrule without plastic sleeve max. | 4 mm ² |
| Conductor cross section stranded, with ferrule with plastic sleeve min. | 0.25 mm ² |
| Conductor cross section stranded, with ferrule with plastic sleeve max. | 2.5 mm ² |
| 2 conductors with same cross section, solid min. | 0.2 mm ² |
| 2 conductors with same cross section, solid max. | 1.5 mm ² |
| 2 conductors with same cross section, stranded min. | 0.2 mm ² |
| 2 conductors with same cross section, stranded max. | 1 mm ² |

| | |
|---|----------------------|
| 2 conductors with same cross section, stranded, ferrules without plastic sleeve, min. | 0.25 mm ² |
| 2 conductors with same cross section, stranded, ferrules without plastic sleeve, max. | 1 mm ² |
| 2 conductors with same cross section, stranded, TWIN ferrules with plastic sleeve, max. | 0.5 mm ² |
| Connection method | Screw connection |
| Stripping length | 9 mm |
| Screw thread | M3 |
| Tightening torque, min | 0.5 Nm |
| Tightening torque max | 0.6 Nm |

Certificates



Certification

cULus Recognized, GOST, DNV

Certifications applied for:

Certification Ex:

Accessories

| Item | Designation | Description |
|-----------------|--------------|---|
| Assembly | | |
| 2714145 | ATP-PIK | Partition plate, Length: 95 mm, Width: 1.5 mm, Height: 57 mm, Color: gray |
| 3022218 | CLIPFIX 35 | Snap-on end bracket, for 35 mm NS 35/7.5 or NS 35/15 DIN rail, can be fitted with Zack strip ZB 8 and ZB 8/27, terminal strip marker KLM 2 and KLM, width: 9.5 mm, color: gray |
| 3022276 | CLIPFIX 35-5 | Quick mounting end clamp for NS 35/7,5 DIN rail or NS 35/15 DIN rail, can be fitted with ZB 5 and ZBF 5 zack marker strip, KLM 2, KLM3, and KML3L terminal strip marker, parking option for FBS...5, FBS...6, KSS 5, KSS 6, width: 5.15 mm, color: gray |
| 2714080 | D-PIK 4 | End cover, Length: 88 mm, Width: 1.5 mm, Color: gray |
| 1201442 | E/UK | End clamp, for assembly on NS 32 or NS 35/7.5 DIN rail |
| 1201413 | E/UK 1 | End clamps, for supporting the ends of double-level and three-level terminal blocks, width: 10 mm, color: gray |

| | | |
|---------|-----------------------------|---|
| 0801704 | NS 35/ 7,5 AL UNPERF 2000MM | DIN rail, material: Aluminum, unperforated, height 7.5 mm, width 35 mm, length: 2 m |
| 1206560 | NS 35/ 7,5 CAP | DIN rail end piece, for DIN rail NS 35/7.5 |
| 0801762 | NS 35/ 7,5 CU UNPERF 2000MM | DIN rail, material: Copper, unperforated, height 7.5 mm, width 35 mm, length: 2 m |
| 0801733 | NS 35/ 7,5 PERF 2000MM | DIN rail, material: steel galvanized and passivated with a thick layer, perforated, height 7.5 mm, width 35 mm, length: 2000 mm |
| 0801681 | NS 35/ 7,5 UNPERF 2000MM | DIN rail, material: Steel, unperforated, height 7.5 mm, width 35 mm, length: 2 m |
| 1204119 | NS 35/ 7,5 WH PERF 2000MM | DIN rail 35 mm (NS 35) |
| 1204122 | NS 35/ 7,5 WH UNPERF 2000MM | DIN rail 35 mm (NS 35) |
| 1206421 | NS 35/ 7,5 ZN PERF 2000MM | DIN rail, material: Galvanized, perforated, height 7.5 mm, width 35 mm, length: 2 m |
| 1206434 | NS 35/ 7,5 ZN UNPERF 2000MM | DIN rail, material: Galvanized, unperforated, height 7.5 mm, width 35 mm, length: 2 m |
| 1201756 | NS 35/15 AL UNPERF 2000MM | DIN rail, deep drawn, high profile, unperforated, 1.5 mm thick, material: aluminum, height 15 mm, width 35 mm, length 2000 mm |
| 1206573 | NS 35/15 CAP | DIN rail end piece, for DIN rail NS 35/15 |
| 1201895 | NS 35/15 CU UNPERF 2000MM | DIN rail, material: Copper, unperforated, 1.5 mm thick, height 15 mm, width 35 mm, length: 2 m |
| 1201730 | NS 35/15 PERF 2000MM | DIN rail, material: steel galvanized and passivated with a thick layer, perforated, height 15 mm, width 35 mm, length: 2000 mm |
| 1201714 | NS 35/15 UNPERF 2000MM | DIN rail, material: Steel, unperforated, height 15 mm, width 35 mm, length: 2 m |
| 0806602 | NS 35/15 WH PERF 2000MM | DIN rail 35 mm (NS 35) |
| 1204135 | NS 35/15 WH UNPERF 2000MM | DIN rail 35 mm (NS 35) |
| 1206599 | NS 35/15 ZN PERF 2000MM | DIN rail, material: Galvanized, perforated, height 15 mm, width 35 mm, length: 2 m |
| 1206586 | NS 35/15 ZN UNPERF 2000MM | DIN rail, material: Galvanized, unperforated, height 15 mm, width 35 mm, length: 2 m |
| 1201798 | NS 35/15-2,3 UNPERF 2000MM | DIN rail, material: Steel, unperforated, 2.3 mm thick, height 15 mm, width 35 mm, length: 2 m |

Bridges

| | | |
|---------|-------------|---|
| 0203250 | FBI 10- 6 | Fixed bridge, Number of positions: 10, Color: silver |
| 0201650 | FBI 100- 6 | Fixed bridge, Number of positions: 100, Color: silver |
| 0201867 | FBI 20- 6 | Fixed bridge, Number of positions: 20, Color: silver |
| 1302338 | IS-K 4 | Bridge bar isolator, Color: gray |
| 0301505 | ISSBI 10- 6 | Bridge bar isolator, Number of positions: 10, Color: silver |

General

| | | |
|---------|-----------|---------------------------------------|
| 0800886 | E/NS 35 N | End clamp, width: 9.5 mm, color: gray |
|---------|-----------|---------------------------------------|

Marking

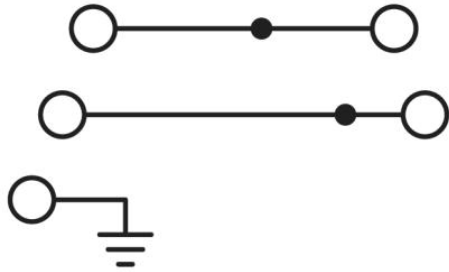
| | | |
|---------|------------------|---|
| 1007222 | SBS 6:UNBEDRUCKT | Marker cards, Card, white, Unlabeled, Can be labeled with: Plotter, Mounting type: Snap into tall marker groove, Snap into flat marker groove, For terminal block width: 6.2 mm, Lettering field: 6 x 6.1 mm |
| 0818085 | UC-TM 6 | Marker for terminal blocks, Sheet, white, Unlabeled, Can be labeled with: BLUEMARK CLED, Bluemark, Plotter, Mounting type: Snap into tall marker groove, For terminal block width: 6.2 mm, Lettering field: 5.6 x 10.5 mm |
| 0824589 | UC-TM 6 CUS | Marker for terminal blocks, Can be ordered: By sheet, white, Labeled according to customer specifications, Mounting type: Snap into tall marker groove, For terminal block width: 6.2 mm, Lettering field: 5.6 x 10.5 mm |
| 0828736 | UCT-TM 6 | Marker for terminal blocks, Sheet, white, Unlabeled, Can be labeled with: Thermomark C+, Thermomark C, BLUEMARK CLED, Bluemark, Mounting type: Snap into tall marker groove, For terminal block width: 6.2 mm, Lettering field: 5.6 x 10.5 mm |
| 0829602 | UCT-TM 6 CUS | Marker for terminal blocks, Can be ordered: By sheet, white, Labeled according to customer specifications, Mounting type: Snap into tall marker groove, For terminal block width: 6.2 mm, Lettering field: 5.6 x 10.5 mm |
| 0811228 | X-PEN 0,35 | Marker pen without ink cartridge, for manual labeling of markers, labeling extremely wipe-proof, line thickness 0.35 mm |
| 0824992 | ZB 6 CUS | Zack marker strip, Can be ordered: Strip, white, Labeled according to customer specifications, Mounting type: Snap into tall marker groove, For terminal block width: 6.2 mm, Lettering field: 6.15 x 10.5 mm |
| 1051003 | ZB 6:UNBEDRUCKT | Zack marker strip, Strip, white, Unlabeled, Can be labeled with: Plotter, Mounting type: Snap into tall marker groove, For terminal block width: 6.2 mm, Lettering field: 6.15 x 10.5 mm |

Tools

| | | |
|---------|-------------|--|
| 1205053 | SZS 0,6X3,5 | Actuation tool, for ST terminal blocks, insulated, also suitable for use as a bladed screwdriver, size: 0.6 x 3.5 x 100 mm, 2-component grip, with non-slip grip |
|---------|-------------|--|

Drawings

Circuit diagram



Address

PHOENIX CONTACT Ltd
Halesfield 13
Telford / Shropshire / TF7 4PG,England
Phone 01952 681 700
Fax 01952 681 799
<http://www.phoenixcontact.co.uk>



Phoenix Contact Ltd.
Technical modifications reserved;