

Datasheet

Art.No. R1.188.3580.0

Device for monitoring of safety-related circuits SNO 4083KM-A
1,5s_DC 24V

Base unit also for elevators EN 81-1/2 and heaters EN50156-1 single-channel or two-channel control, automatic or manual reset with monitoring, cross circuit monitoring, 3 enabling current paths, 1 signalling output, DC 24 V, screw-terminals pluggable



Art.No.	R1.188.3580.0
EAN	4049088070884
Order unit	1 pieces

Approvals



Technical data

General

Function display	3 LED, green
Creepage distances and clearances between the circuits	EN 60664-1
Protection degree according to DIN EN 60529 (housing)	IP40
Protection degree according to DIN EN 60529 (terminals)	IP20
Ambient temperature min.	-25 °C
Ambient temperature max.	65 °C
Wire ranges screw terminals, fine-stranded / solid	1 x 0,14 mm ² - 2,5 mm ² / 2 x 0,14 mm ² - 0,75 mm ²
Wire ranges screw terminals, fine-stranded with ferrules	1 x 0,25 mm ² - 2,5 mm ² / 2 x 0,25 mm ² - 0,5 mm ²
Permissible torque min.	0.5 Nm
Permissible torque max.	0.6 Nm
Tightening moment	0.6 Nm
Wire range cage clamp terminals	2 x 0,25mm ² - 1,5mm ²
Weight	0.2 kg
Standards	EN ISO 13849-1;EN 62061;EN 81-1;EN 50156-1
Suited for safety functions	Yes
Category according to EN ISO 13849-1	4
Muting possible	No
Feedback circuit	Yes
Start contact	Yes
Performance level acc. to EN ISO 13849-1	e
Rail mounting possible	Yes

Connection Data

Detachable clamps	Yes
-------------------	-----

Type of electric connection	Screw connection
-----------------------------	------------------

Application

Model	Basic device
Suitable for monitoring of magnetic switches	Yes
Suitable for monitoring of proximity switches	Yes
Suitable for monitoring of emergency-stop circuits	Yes
Suitable for monitoring of optoelectronic protection equipment	Yes
Suitable for monitoring of position switches	Yes

Output circuit

Enabling paths	3
Signaling paths	1
Contact material	Ag-alloy, gold-plated
Max. thermal current I _{th} , enabling paths	6 A
Max. thermal current I _{th} , signaling paths	2 A
Max. total current I ₂ of all current path	25 A ²
Application category AC-15 (NO)	Ue 230V, Ie 3A
Application category DC-13 (NO)	Ue 24V, Ie 5A
Short-circuit protection (NO), max. fuse insert	6 A class gG fuse, fuse integral
Mechanical life	10 ⁷ switching cycles

Control circuit

Nominal output voltage DC	22.5 V
Input current (safety circuit / reset circuit)	25 mA
max. peak current (safety circuit / reset circuit)	100 mA
Response time t _{A1}	250 ms
Response time t _{A2}	250 ms
Min. switch-on time	60 ms
Recovery time t _W	120 ms
Release time t _R	20 ms
Synchronous time t _S	1.5 s
Permissible test pulse time t _{TP}	0.8 ms
max. resistivity, per channel	≤ (5 + (1,176 × U _B / U _N - 1) × 100) Ω
Type of switch function of the inputs	Normally open contact
Evaluation inputs	2-channel

Supply circuit

Nominal voltage U _N	DC 24 V
Rated consumption DC	1.6 W
Operating voltage min.	20.4 V
Operating voltage max.	28.8 V

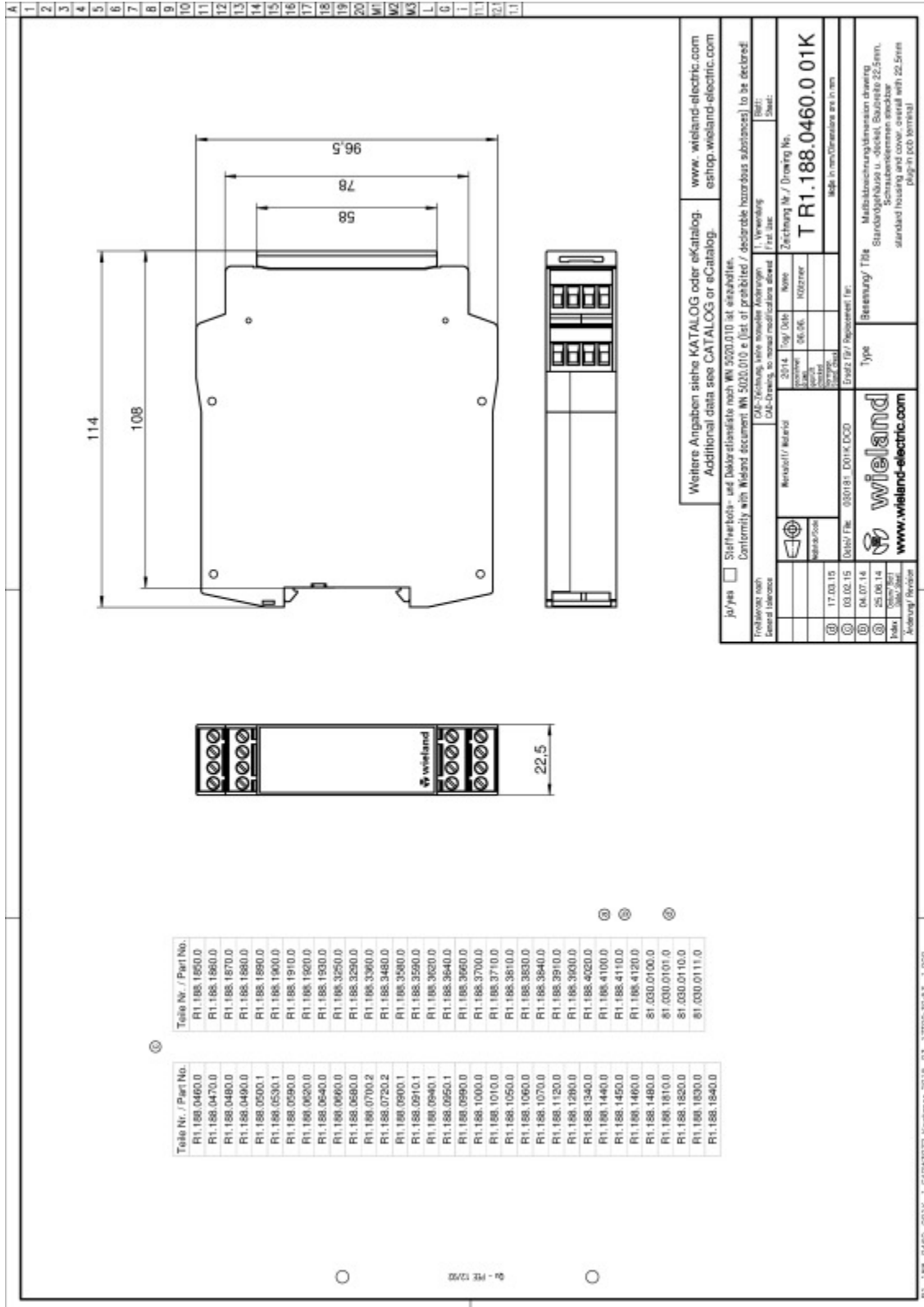
Dimensions

Depth	114 mm
Width	22.5 mm
Height	96.5 mm

Classification

ECLASS 8.1	27371819: Device for monitoring of safety-related circuits
ETIM 5.0	EC001449: Device for monitoring of safety-related circuits

Drawings



R1.188.0460.001K_1 CADW3072 Revisoren 2015-03-17 10:29:30.53 1.000