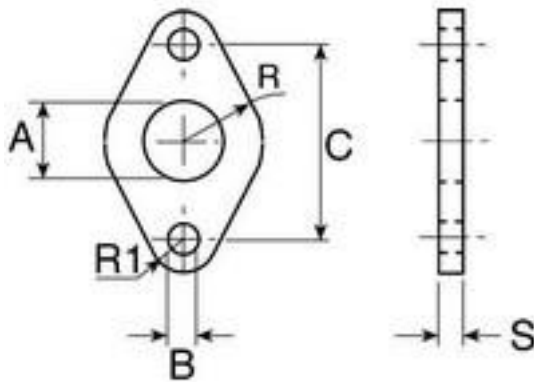


Datasheet

RS Pro Flange, To Fit Bore Size 20 mm, 25 mm 20 mm, 25 mm

RS Stock No: **304-3678**



Product Details

RS Pro flange fits 20 mm and 25 mm bore cylinders. It is suitable for use with C85 series single and double acting cylinders. The foot mounts are supplied in pairs.

Features and Benefits

- Fits bore size of 20 mm and 25 mm
- Suitable for use with C85 series single and double acting cylinders
- Foot mounts supplied in pairs



ENGLISH

Specifications:

For Use With	C85 Series Single & Double Acting Cylinders
To Fit Bore Size	20 mm, 25 mm
To Fit Bore Size	20 mm, 25 mm
Type	Flange
Standards Met	RoHS Compliant