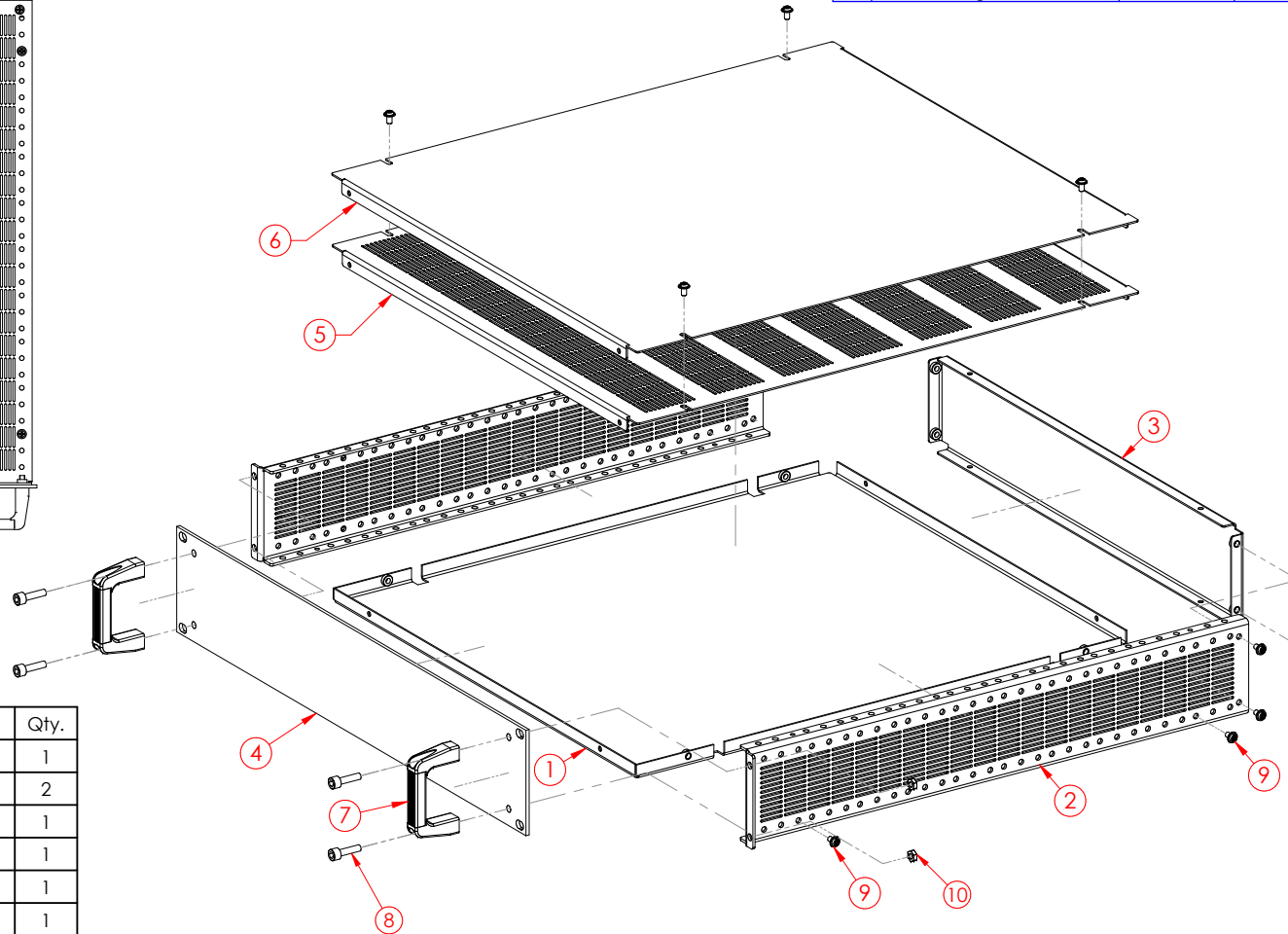
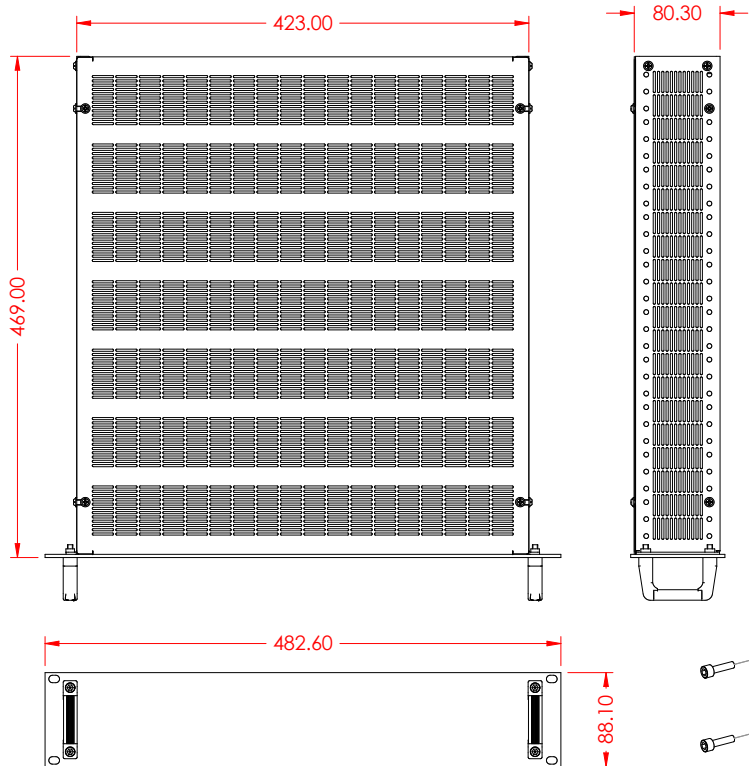


CHEVAL CONFIDENTIAL - STRICTLY PRIVATE

THE INFORMATION CONTAINED IN THIS DRAWING IS THE SOLE PROPERTY OF CHEVAL ELECTRONIC ENCLOSURE. ANY REPRODUCTION IN PART OR WHOLE WITHOUT THE WRITTEN PERMISSION OF CHEVAL ELECTRONIC ENCLOSURE IS PROHIBITED.

REVISIONS			
Rev.	Description	Editor	Date
00	-		21 Jan 2009
01	Change : Item 1,5,6		06 May 2009
02	Change : Item 1,2,3,5,6		22 May 2009
03	Change : Item 4		02 Dec 2016
04	Change : Item 7,8 Add : Item 10	TANAPONG.S	13 Dec 2018
05	Change Item : 4	P.NIWAT	08 May 2019



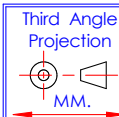
Item	Description	Dwg. No.	Qty.
1	BASE PANEL	C17-05204802	1
2	SIDE PANEL 2U	C17-05204601	2
3	REAR PANEL 2U	C17-05204701	1
4	FRONT PANEL 2U	017-05204503	1
5	TOP COVER (VENTILATED)	C17-05204902	1
6	TOP COVER (UNVENTILATED)	C17-05205002	1
7	Handle 2U	017-064AAV00	2
8	Hex Socket Screw M5-20 BLK.	Hardware	4
9	SCREW M4 X 8 mm. PAN HEAD BLK. (With washer)	SCRM48SABLK	12
10	Nut M5 BLK	Hardware	4

OPERATIONS

- ASSY
- PACK

Note : All Items in Assembly to be RoHS Compliant. IF Any Part of Specification Conflicts With Latest RoHS Requirements. Contact Cheval QA.

Spec Other : Per spec IP-CHE-XXXX



Drawn	P.PHUSIT	Date	21 Jan 2009
Check 1		Date	
Check 2		Date	
Item Weight (Reference only) 4.4 kg			

Material			
SEE INDIVIDUAL COMPONENTS.			
K.	Scale	Units	QTY.
V.	-	MM.	1
Do not Scale Drawing			

Customer Cheval			CHEVAL ELECTRONIC ENCLOSURE CO.,LTD. 145 Moo 17 Bangplee Industrial Estate, Soi 4 Bangsaotong, Sub-District, Bangsaotong Samutprakarn 10540 THAILAND. Tel 3151504-5						
Job Name	19 HEAVY DUTY 2U (2000232)		Dwg Title	ASS'Y 19 HEAVY DUTY 2U					
CD No	CHV 052	Sub Dir	017-052	File Name	052-AAB5	Dwg No	017-052AAB05	Sheet	1/2

CHEVAL CONFIDENTIAL - STRICTLY PRIVATE

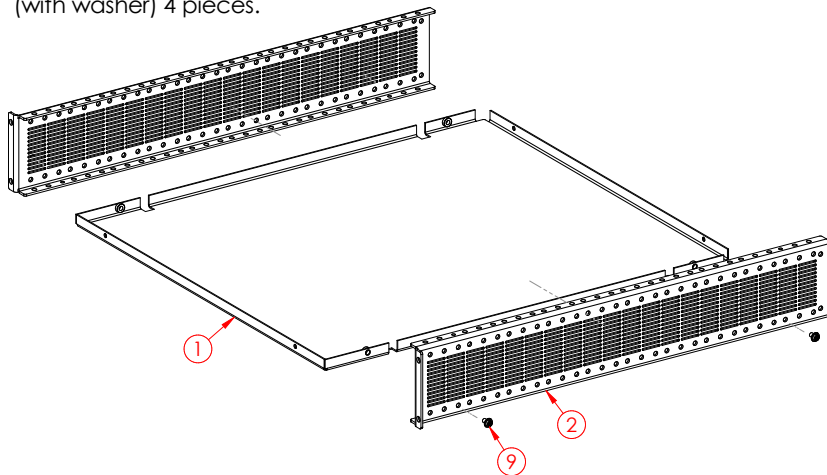
THE INFORMATION CONTAINED IN THIS DRAWING IS THE SOLE PROPERTY OF CHEVAL ELECTRONIC ENCLOSURE. ANY REPRODUCTION IN PART OR WHOLE WITHOUT THE WRITTEN PERMISSION OF CHEVAL ELECTRONIC ENCLOSURE IS PROHIBITED.

REVISIONS

Rev.	Description	Editor	Date
00	-		21 Jan 2009
01	Change : Item 1,5,6		06 May 2009
02	Change : Item 1,2,3,5,6		22 May 2009
03	Change : Item 4		02 Dec 2016
04	Change : Item 7,8 Add : Item 10	TANAPONG.S	13 Dec 2018
05	Change Item : 4	P.NIWAT	08 May 2019

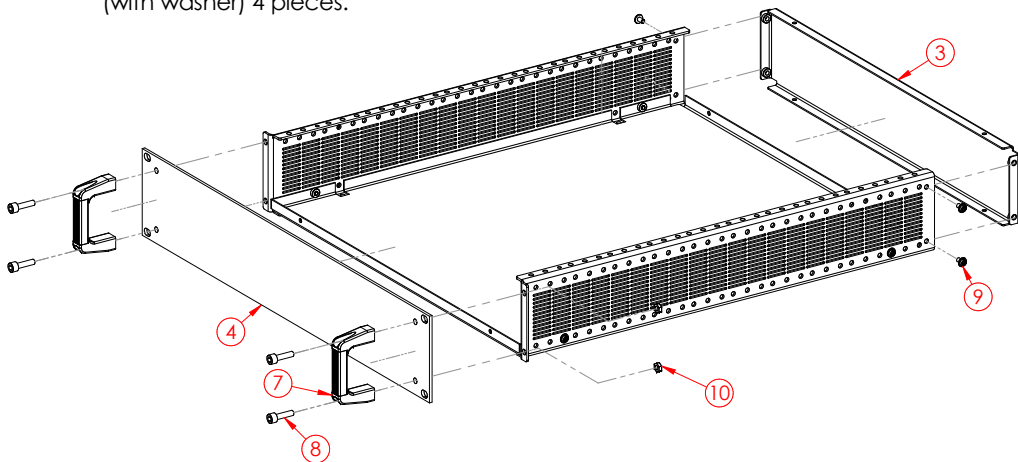
Step 1.

1.1 Install Side Panel 2U To Base Panel with Screw M4 x 8 mm. pan Head Blk. (with washer) 4 pieces.



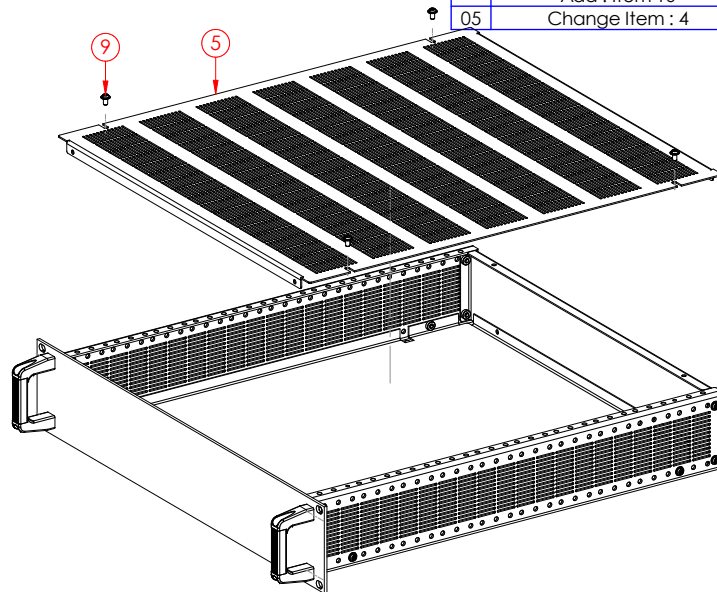
Step 2.

2.1 Install Handle 2U,Front panel 2U To Side Panel 2U with Hex Socket Screw M5-20 BLK & Nut M5 BLK. 4 pieces.
 2.2 Install Rear Panel 2U To Side Panel 2U with Screw M4 x 8 mm. pan Head Blk. (with washer) 4 pieces.



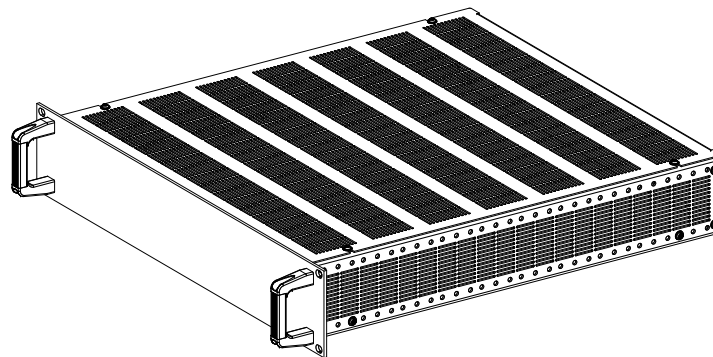
Step 3.

3.1 Install Top cover To Side Panel 2U with Screw M4 x 8 mm. pan Head Blk. (with washer) 4 pieces.



Step 4.

The Complete Assembly 19 Heavy Duty 2U

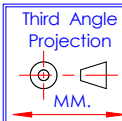


OPERATIONS

- ASSY
- PACK

Note : All Items in Assembly to be RoHS Compliant. IF Any Part of Specification Conflicts With Latest RoHS Requirements. Contact Cheval QA.

Spec Other : Per spec IP-CHE-XXXX



Drawn	P.PHUSIT	Date	21 Jan 2009
Check 1		Date	
Check 2		Date	
Item Weight (Reference only) 4.4 kg			

Material			
SEE INDIVIDUAL COMPONENTS.			
K.	-	Scale	Units
V.	-	-	MM.
Do not Scale Drawing			

Customer Cheval			CHEVAL ELECTRONIC ENCLOSURE CO.,LTD. 145 Moo 17 Bangplee Industrial Estate, Soi 4 Bangsaotong, Sub-District, Bangsaotong Samutprakarn 10540 THAILAND. Tel.3151504-5		
Job Name	19 HEAVY DUTY 2U (2000232)		Dwg Title	ASS'Y 19 HEAVY DUTY 2U	
CD No	CHV 052	Sub Dir	017-052	File Name	052-AAB5
				Dwg No	017-052AAB05
					Sheet 2/2