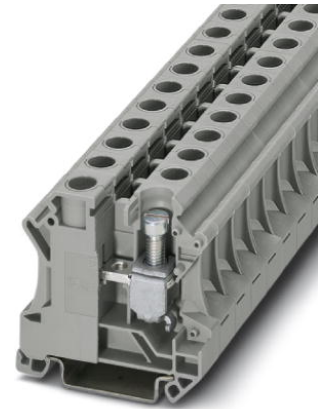


## UTI 16

Order No.: 3073827



<http://eshop.phoenixcontact.de/phoenix/treeViewClick.do?UID=3073827>

Installation feed-through modular terminal block, blue, Special and hybrid connection, Cross section: 6 mm<sup>2</sup> - 25 mm<sup>2</sup>, AWG: 10 - 4, Width: 12.2 mm, Color: gray, Mounting type: NS 35/7,5, NS 35/15

### Commercial data

EAN	4046356347242
Pack	50 pcs.
Customs tariff	85369010
Weight/Piece	0.029167 KG
Product key	01010
Catalog page information	Page 66 (CL-2009)

### Product notes

WEEE/RoHS-compliant since:  
03/30/2009



<http://www.download.phoenixcontact.com>  
Please note that the data given here has been taken from the online catalog. For comprehensive information and data, please refer to the user documentation. The General Terms and Conditions of Use apply to Internet downloads.

### Technical data

#### General

Number of levels	1
Number of connections	2
Color	gray
Insulating material	PA

Inflammability class acc. to UL 94	V2
------------------------------------	----

**Dimensions**

Width	12.2 mm
Length	51 mm
Height NS 35/7,5	50.5 mm
Height NS 35/15	58 mm

**Technical data**

Maximum load current	76 A (with 16 mm <sup>2</sup> conductor cross section)
Rated surge voltage	6 kV
Pollution degree	3
Surge voltage category	III
Insulating material group	I
Connection in acc. with standard	IEC 60947-7-1
Nominal current I <sub>N</sub>	76 A
Nominal voltage U <sub>N</sub>	400 V
Open side panel	nein

**Connection data**

Conductor cross section solid min.	6 mm <sup>2</sup>
Conductor cross section solid max.	25 mm <sup>2</sup>
Conductor cross section stranded min.	6 mm <sup>2</sup>
Conductor cross section stranded max.	16 mm <sup>2</sup>
Conductor cross section AWG/kcmil min.	10
Conductor cross section AWG/kcmil max	4
Conductor cross section stranded, with ferrule without plastic sleeve min.	6 mm <sup>2</sup>
Conductor cross section stranded, with ferrule without plastic sleeve max.	16 mm <sup>2</sup>
Conductor cross section stranded, with ferrule with plastic sleeve min.	6 mm <sup>2</sup>
Conductor cross section stranded, with ferrule with plastic sleeve max.	16 mm <sup>2</sup>
2 conductors with same cross section, solid min.	2.5 mm <sup>2</sup>
2 conductors with same cross section, solid max.	10 mm <sup>2</sup>
2 conductors with same cross section, stranded min.	2.5 mm <sup>2</sup>

2 conductors with same cross section, stranded max.	6 mm <sup>2</sup>
2 conductors with same cross section, stranded, TWIN ferrules with plastic sleeve, min.	4 mm <sup>2</sup>
2 conductors with same cross section, stranded, TWIN ferrules with plastic sleeve, max.	6 mm <sup>2</sup>
2 conductors with same cross section, stranded, ferrules without plastic sleeve, min.	4 mm <sup>2</sup>
2 conductors with same cross section, stranded, ferrules without plastic sleeve, max.	6 mm <sup>2</sup>
Type of connection	Special and hybrid connection
Stripping length	12 mm
Screw thread	M5
Tightening torque, min	2.5 Nm
Tightening torque max	3 Nm

#### Accessories

Item	Designation	Description
<b>Assembly</b>		
1201141	AB/NS	Support, for insulated mounting of DIN rails in insulated systems, plastic, 21 mm high
3022218	CLIPFIX 35	Snap-on end bracket, for 35 mm NS 35/7.5 or NS 35/15 DIN rail, can be fitted with Zack strip ZB 8 and ZB 8/27, terminal strip marker KLM 2 and KLM, width: 9.5 mm, color: gray
1201442	E/UK	Endhalter, zur Montage auf Tragschiene NS 32 oder NS 35/7,5
0401010	EK 116	Power terminal blocks, Load current : 76 A, Cross section: 0.5 mm <sup>2</sup> - 16 mm <sup>2</sup> , Width: 8 mm, Color: aluminum
0401023	EK 135	Power terminal blocks, Load current : 125 A, Cross section: 0.75 mm <sup>2</sup> - 35 mm <sup>2</sup> , Width: 12 mm, Color: aluminum
0801762	NS 35/ 7,5 CU UNPERF 2000MM	DIN rail, material: Copper, unperforated, height 7.5 mm, width 35 mm, length: 2 m
0801733	NS 35/ 7,5 PERF 2000MM	DIN rail, material: Steel, galvanized and passivated with a thick layer, perforated, height 7.5 mm, width 35 mm, length: 2 m
0801681	NS 35/ 7,5 UNPERF 2000MM	DIN rail, material: Steel, unperforated, height 7.5 mm, width 35 mm, length: 2 m
1201895	NS 35/15 CU UNPERF 2000MM	DIN rail, material: Copper, unperforated, 1.5 mm thick, height 15 mm, width 35 mm, length: 2 m
1201730	NS 35/15 PERF 2000MM	DIN rail, material: Steel, perforated, height 15 mm, width 35 mm, length: 2 m
1201714	NS 35/15 UNPERF 2000MM	DIN rail, material: Steel, unperforated, height 15 mm, width 35 mm, length: 2 m

3032428	UAB	Support, Width: 2 mm, Color: blue
---------	-----	-----------------------------------

**Bridges**

3006137	EB 10-12	Cross connector/jumper for modular terminal block, Number of positions: 10, Color: gray
0200075	FBI 2-12	Cross connector/jumper for modular terminal block, Number of positions: 2, Color: aluminum
0203454	FBI 10-12	Cross connector/jumper for modular terminal block, Number of positions: 10, Color: silver

**Marking**

1007248	SBS10:UNBEDRUCKT	Marker cards, unprinted, for individual labeling with the M-PEN, 250-section, perforated, white plastic
---------	------------------	---

**Tools**

1205066	SZS 1,0X4,0	Screwdriver, bladed, matches all screw terminal blocks with 10 mm <sup>2</sup> and 16 mm <sup>2</sup> connection cross section, blade: 1.0 x 4.0 mm
---------	-------------	---

**Drawings**

Circuit diagram



**Address**

PHOENIX CONTACT GmbH & Co. KG  
Flachsmarktstr. 8  
32825 Blomberg, Germany  
Phone +49 5235 3 00  
Fax +49 5235 3 41200  
<http://www.phoenixcontact.de>



© 2009 Phoenix Contact  
Technical modifications reserved;