

SIRIUS 3SB3

The 3SB3 Series is a modular range of commanding and signaling devices for front panel mounting and rear conductor connection. As an alternative, individual elements can also be supplied for use on printed circuit boards. Complete units are offered for the most common used applications.

The 3SB3 Series Is Available:

- ▶ Made of Molded Plastic in Round Design Also Available in Flat and Square Design
- ▶ Made of Metal in Round Design

- ▶ Screw Termination
- ▶ 22 mm Diameter Panel Hole Mount

Pushbutton Flush

- ▶ Momentary Operation
- ▶ Complete Units with 1 NO + 1 NC



Stock No.	Mfr.'s Type	Actuator Color	IP Rating	Ring Type	EACH
70240514	3SB3201-0AA11	Black	IP66	Plastic	34.15
70240515	3SB3201-0AA21	Red	IP66	Plastic	34.15
70240516	3SB3201-0AA31	Yellow	IP66	Plastic	34.15
70240517	3SB3201-0AA41	Green	IP66	Plastic	34.15
70240518	3SB3201-0AA51	Blue	IP66	Plastic	34.15
70240519	3SB3201-0AA61	White	IP66	Plastic	34.15
70240654	3SB3601-0AA11	Black	IP67	Metal	39.00
70240655	3SB3601-0AA21	Red	IP67	Metal	39.00
70240656	3SB3601-0AA31	Yellow	IP67	Metal	39.00
70240657	3SB3601-0AA41	Green	IP67	Metal	39.00
70240658	3SB3601-0AA51	Blue	IP67	Metal	39.00
70240659	3SB3601-0AA61	White	IP67	Metal	39.00

Pushbutton Flush Illuminated

- ▶ Momentary Operation
- ▶ Complete Units With 1 NO + 1 NC
- ▶ 24 V or 110 V Integrated LED Light Module or 24 V Incandescent Lamp Module



Stock No.	Mfr.'s Type	Actuator Color	LED Voltage	IP Rating	Ring Type	EACH
70240546	3SB3247-0AA21	Red	24	IP66	Plastic	75.11
70240547	3SB3247-0AA31	Yellow	24	IP66	Plastic	75.11
70240548	3SB3247-0AA41	Green	24	IP66	Plastic	75.11
70240549	3SB3247-0AA51	Blue	24	IP66	Plastic	75.11
70240550	3SB3247-0AA61	White	24	IP66	Plastic	75.11
70240556	3SB3251-0AA21	Red	110	IP66	Plastic	74.13
70240557	3SB3251-0AA31	Yellow	110	IP66	Plastic	74.13
70240558	3SB3251-0AA41	Green	110	IP66	Plastic	74.13
70240559	3SB3251-0AA51	Blue	110	IP66	Plastic	74.13
70240683	3SB3647-0AA21	Red	24	IP67	Metal	81.95
70240684	3SB3647-0AA31	Yellow	24	IP67	Metal	81.95
70240685	3SB3647-0AA41	Green	24	IP67	Metal	81.95
70240686	3SB3647-0AA51	Blue	24	IP67	Metal	81.95
70240687	3SB3647-0AA61	White	24	IP67	Metal	81.95
70240692	3SB3651-0AA21	Red	110	IP67	Metal	81.95
70240693	3SB3651-0AA31	Yellow	110	IP67	Metal	81.95
70240694	3SB3651-0AA41	Green	110	IP67	Metal	81.95
70240695	3SB3651-0AA51	Blue	110	IP67	Metal	81.95
70240696	3SB3651-0AA61	White	110	IP67	Metal	81.95
70240536	3SB3221-0AA21*	Red	24	IP66	Plastic	74.13
70240537	3SB3221-0AA31*	Yellow	24	IP66	Plastic	74.13
70240538	3SB3221-0AA41*	Green	24	IP66	Plastic	74.13
70240539	3SB3221-0AA51*	Blue	24	IP66	Plastic	74.13
70240540	3SB3221-0AA61*	White	24	IP66	Plastic	74.13

*With 24 V BA 9S lamp module.

Pushbutton Extended

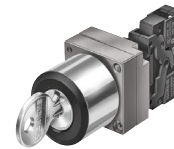
- ▶ Momentary Operation
- ▶ Complete Units with 1 NO + 1 NC



Stock No.	Mfr.'s Type	Actuator Color	IP Rating	Ring Type	EACH
70240520	3SB3201-0BA11	Black	IP66	Plastic	34.15
70240521	3SB3201-0BA21	Red	IP66	Plastic	34.15
70240522	3SB3201-0BA31	Yellow	IP66	Plastic	34.15
70240523	3SB3201-0BA41	Blue	IP66	Plastic	34.15
70240524	3SB3201-0BA61	White	IP66	Plastic	34.15
70240660	3SB3601-0BA11	Black	IP67	Metal	38.02
70240661	3SB3601-0BA21	Red	IP67	Metal	38.02
70240662	3SB3601-0BA31	Yellow	IP67	Metal	38.02
70240663	3SB3601-0BA41	Green	IP67	Metal	38.02
70240664	3SB3601-0BA51	Blue	IP67	Metal	38.02
70240665	3SB3601-0BA61	White	IP67	Metal	38.02

Selector Keyed

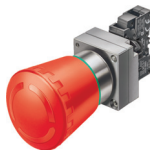
- ▶ RONIS Key-Operated
- ▶ Inclusive 2 Keys



Stock No.	Mfr.'s Type	Operation	Contact Form	IP Rating	Ring Type	EACH
70240527	3SB3201-4AD11	2-pos. key remove, Maintained	1 NO-1 NC	IP66	Plastic	85.84
70240529	3SB3202-4AD11	2-pos. key remove, Maintained	1 NO	IP66	Plastic	63.40
70240532	3SB3208-4DD11	3-pos. key remove, Maintained	2 x 1 NO-1 NC	IP66	Plastic	107.29
70240535	3SB3210-4DD11	3-pos. key remove, Maintained	2 x 1 NO	IP66	Plastic	81.95
70240669	3SB3601-4AD11	2-pos. key remove, Maintained	1 NO-1 NC	IP67	Metal	90.70
70240671	3SB3602-4AD11	2-pos. key remove, Maintained	1 NO-1 NC	IP67	Metal	78.03

Pushbutton E-Stop

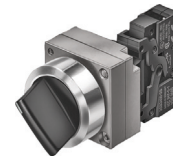
- ▶ Red 40 mm Actuator
- ▶ Complete Units with Contact Blocks
- ▶ ISO 13850 and IEC 60947-5-5



Stock No.	Mfr.'s Type	Operation	Contact Form	IP Rating	EACH
70240666	3SB3601-1HR20	Push/Twist Release	1 NO-1 NC	IP67	53.66
70242365	3SB3601-1TA20	Pull-to-Unlock	1 NO-1 NC	IP67	67.99
70240667	3SB3601-1TR20	Push/Pull Release	1 NO-1 NC	IP67	66.32
70240672	3SB3603-1HR20	Push/Twist Release	1 NC	IP67	53.66
70240673	3SB3603-1TR20	Push/Pull Release	1 NC	IP67	53.66

Selector Knob

- ▶ Black Actuator Color
- ▶ Complete Units with Contact Blocks



Stock No.	Mfr.'s Type	Operation	Contact Form	IP Rating	Ring Type	EACH
70240526	3SB3201-2KA11	2-pos. Maintained	1 NO-1 NC	IP66	Plastic	41.15
70240528	3SB3202-2KA11	2-pos. Maintained	1 NO	IP66	Plastic	28.50
70240530	3SB3208-2DA11	3-pos. Maintained	2 x 1 NO-1 NC	IP66	Plastic	66.32
70240531	3SB3208-2EA11	3-pos. Momentary L and R	2 x 1 NO-1 NC	IP66	Plastic	71.21
70240533	3SB3210-2DA11	3-pos. Maintained	2 x 1 NO	IP66	Plastic	41.15
70240534	3SB3210-2EA11	3-pos. Momentary L and R	2 x 1 NO	IP66	Plastic	44.31
70240668	3SB3601-2PA11	2-pos. Maintained	1 NO-1 NC	IP67	Metal	45.85
70240670	3SB3602-2PA11	2-pos. Maintained	1 NO	IP67	Metal	33.16
70240674	3SB3608-2SA11	3-pos. Maintained	2 x 1 NO-1 NC	IP67	Metal	74.13
70240675	3SB3608-2TA11	3-pos. Momentary L and R	2 x 1 NO-1 NC	IP67	Metal	78.03
70240676	3SB3610-2SA11	3-pos. Maintained	1 NO-1 NC	IP67	Metal	45.85
70240677	3SB3610-2TA11	3-pos. Momentary L and R	2 x 1 NO	IP67	Metal	49.74