



## Datasheet

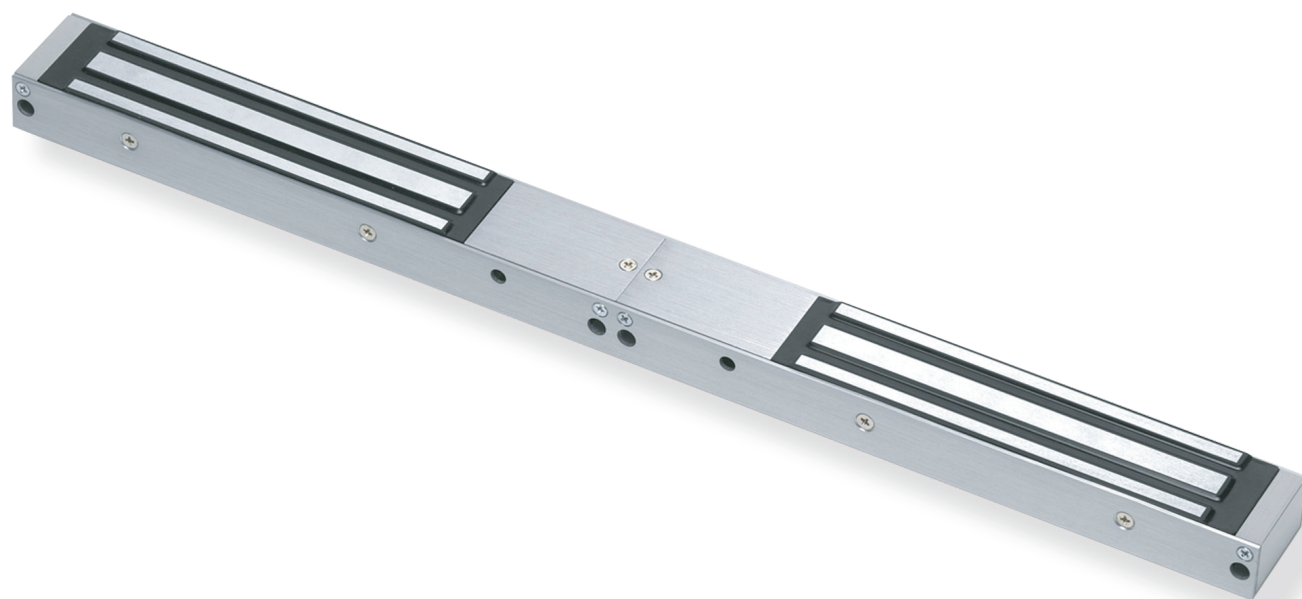
ELECTRIC LOCKING SYSTEMS

ENGLISH

# Double Mini Magnet

RS Stock No. 7748223

- Operating voltage: 12 or 24Vdc
- Brushed aluminium
- Current draw: 500mA at 12Vdc x 2  
250mA at 24Vdc x2  
(at temperature 20°C)
- Magnetic bond sensor monitor output remotely monitors the door lock or unlock status. (N.C. Output-Door opened; N.O. Output-door closed) (SPDT rated 0.25A at 12Vdc)
- Operating temperature: -10 to 55°C (14 to 131°F)
- Humidity: 0 to 95% non-condensing
- Lock's surface temperature: Current temperature  $\pm 20\%$  (when power is on)
- Holding force: Up to 600lbs x 2 (272 x 2kg)
- Weight: 4.0kg (approx)



| DIMENSIONS     | LENGTH | WIDTH | DEPTH |
|----------------|--------|-------|-------|
| Magnet         | 500    | 42    | 26    |
| Armature Plate | 185    | 38    | 12    |

All dimensions in mm