



# IQXO-350 Commercial Oscillator

ISSUE 18; 12 SEPT 2008



## Delivery Options

- Common frequencies are available from stock, please contact our sales office for current leadtimes

## Output Compatibility

- HCMOS/TTL/LSTTL
- Drive Capability: 50pF or 10TTL (<70.0MHz)  
30pF (≥70.0 to 160.0MHz)  
(1.0 to < 100.0kHz 15pF or 10 LS TTL only)

## Package Outline

- 14-pin DIL compatible resistance welded enclosure, hermetically sealed with glass to metal seal. Available over 0 to 70°C (IQXO-350) or -40 to 85°C (IQXO-350I)

## Standard Frequency Stabilities

- ±25ppm, ±50ppm, ±100ppm  
(over operating temperature range)

## Operating Temperature Ranges

- 0 to 70°C (IQXO-350)
- 40 to 85°C (IQXO-350I)

## Storage Temperature Range

- 55 to 125°C

## Environmental Specification

- Terminal Strength: 0.91kg max. Force perpendicular to top & bottom
- Hermetic Seal: not to exceed  $1 \times 10^{-8}$  mBar litres of Helium leakage
- Solderability: MIL-STD-202E, Method 208C
- Vibration: 10 to 55Hz 0.76mm displacement, sweep 60 seconds, duration 2 hours
- Rapid Change of Temperature over Operating Temperature Range: 10 cycles
- Shock: 981m/s<sup>2</sup> for 6ms, three shocks in each direction along the three mutually perpendicular planes

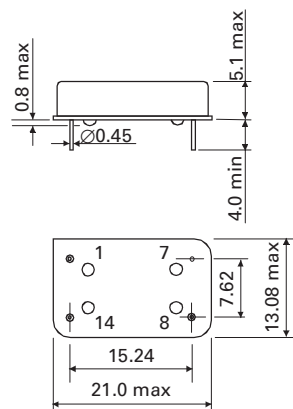
## Marking

- Model number + Operating Temperature Code (if applicable)
- Frequency Stability Code
- Frequency Tolerance Code (Optional)
- Frequency
- Date Code (Year/Week)

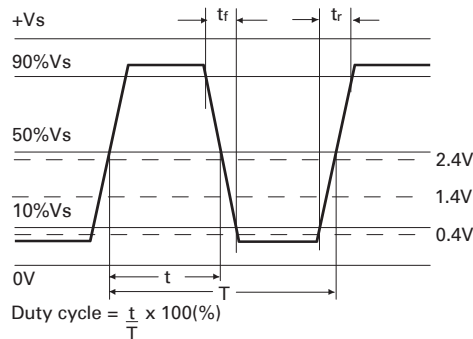
## Minimum Order Information Required

- Frequency + Model Number + Operating Temperature (if applicable) + Frequency Stability

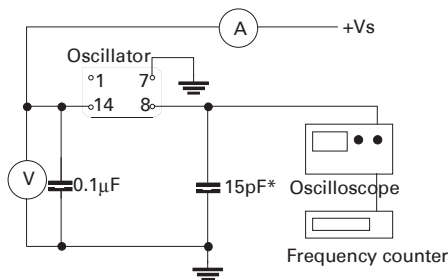
## Outline in mm



## Output Waveform - HCMOS/TTL



## Test Circuit - HCMOS



\*Inclusive of jigging & equipment capacitance

LEADED SPXOS



**Electrical Specifications - maximum limiting values when measured in HCMOS test circuit.**

Frequency Range	Frequency Stability	Supply Voltage	Supply Current	Rise Time(tr)	Fall Time (tf)	Duty Cycle	Model Number
1.0kHz to <100.0kHz	±25ppm, ±50ppm, ±100ppm	5V ±0.25V	10mA	10ns	10ns	45/55%	IQX0-350, 350I
100.0kHz to <250.0kHz				15ns	15ns		
250.0kHz to <5.0MHz			30mA	10ns	10ns		
5.0MHz to <16.0MHz				10ns	10ns		
16.0MHz to <30.0MHz			40mA	8ns	8ns	40/60%	
30.0MHz to <50.0MHz			50mA	6ns	6ns		
50.0MHz to <70.0MHz			70mA	5ns	5ns		

**Ordering Example**

Frequency 22.0MHz    IQX0-350I    B

Model number: -350, 350I

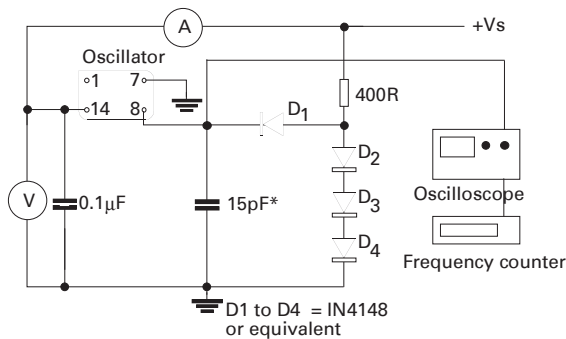
Operating Temperature Code: I = 40 to 85°C Not applicable for 0 to 70°C

Frequency Stability: A = ±25ppm, B = ±50ppm, C = ±100ppm

LEADED SPXOs

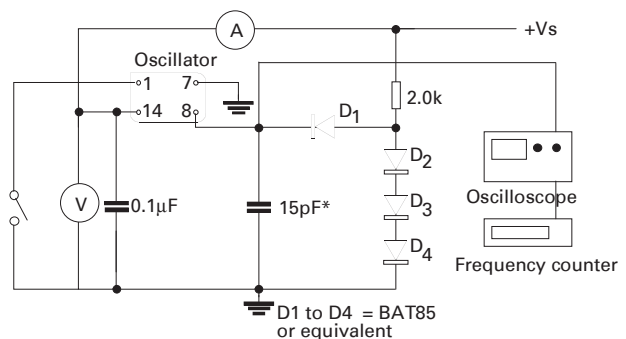
Please note that the rise and fall times listed are the maximum values we specify to cover various frequency breaks. In practise the actual values are generally lower depending upon the spot frequency chosen. For typical values please contact our sales office.

**Test Circuit - TTL**



\*Inclusive of jigging & equipment capacitance

**Test Circuit - LSTTL**



\*Inclusive of jigging & equipment capacitance

Note: Pin 1 = No connection on non tri-state models