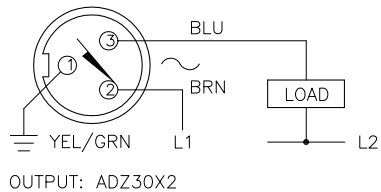
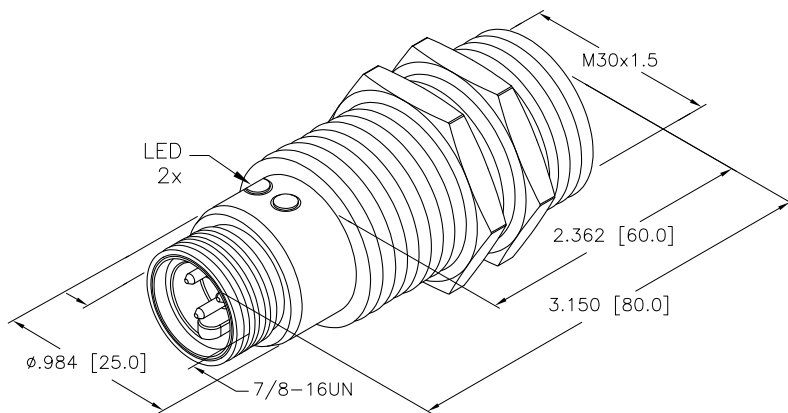
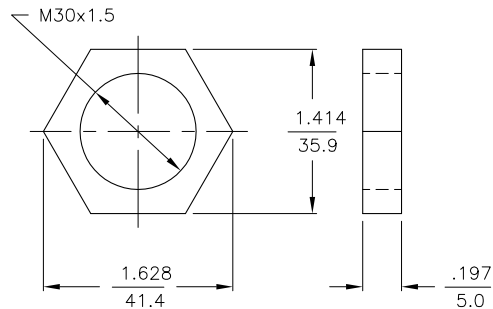


WIRING DIAGRAMS



SHORT-CIRCUIT AND OVERLOAD PROTECTED

STAINLESS STEEL M30 LOCKNUT



SPECIFICATIONS

OPERATING VOLTAGE	20-250 VAC 10-300 VDC
LINE FREQUENCY	40-60 Hz
HYSTERESIS	3-15%
VOLTAGE DROP ACROSS CONDUCTING SENSOR	≤6.0 V at 400 mA
OUTPUT FUNCTION -ADZ	NORMALLY OPEN 2-WIRE AC/DC SELF-CONTAINED
SHORT-CIRCUIT PROTECTED	YES
TRIGGER CURRENT FOR OVERLOAD PROTECTION	≥440 mA
CONTINUOUS LOAD CURRENT	400 mA AC MAX. 400 mA DC MAX.
RESIDUAL CURRENT	≤1.7 mA
MINIMUM LOAD CURRENT	≥3.0 mA
INRUSH CURRENT	≤4.0 A (≤20 ms/5 Hz)
TIME DELAY BEFORE AVAILABILITY	≤120 ms
POWER-ON EFFECT PROTECTION	INCORPORATED
PROTECTION AGAINST TRANSIENTS	EN 60947-5-2
OPERATING TEMPERATURE	-25°C to +70°C (±10% DRIFT) -30°C to +85°C (±15% DRIFT)
ENCLOSURE	MEETS NEMA 1, 3, 4, 6, 13 AND IEC IP67
SHOCK	30 g, 11 ms
VIBRATION	55 Hz, 1 mm AMPLITUDE (IN ALL 3 PLANES)
LED FUNCTION	GREEN = POWER ON GREEN FLASHING = SHORT-CIRCUIT WARNING YELLOW = OUTPUT ENERGIZED
RATED OPERATING DISTANCE	10 mm = .394"
SWITCHING FREQUENCY	20 Hz
REPEATABILITY	≤2% of RATED OPERATING DISTANCE

NOTES:

1. WELD FIELD IMMUNE. SENSORS IS SUITABLE FOR USE ON RESISTANCE WELDING MACHINES.

RELATED DOCUMENTS 1. 2. 3. 4.	3RD ANGLE PROJECTION 	THIS DRAWING IS PROPERTY OF TURCK INC. USE OF THIS DOCUMENT WITHOUT WRITTEN PERMISSION IS PROHIBITED.		3000 CAMPUS DRIVE MINNEAPOLIS, MN 55441 1-800-544-7769 (763) 553-7300 (763) 553-0708 fax turck.com	
	MATERIAL BRASS BARREL	ALL DIMENSIONS DISPLAYED ON THIS DRAWING ARE FOR REFERENCE ONLY	DRFT IK	DATE 12/30/96	DESCRIPTION Bi10U-G30-ADZ30X2-B1131
FINISH COPPER/NICKEL/ CHROME PLATING	DSGN		SCALE NONE		
		UNIT OF MEASUREMENT INCH [MILLIMETER]		IDENTIFICATION NO. M4281612	REV B
B UPDATE BARREL LENGTH		RDS 06/15/11	35386	DO NOT SCALE THIS DRAWING	
REV DESCRIPTION	BY DATE ECO NO.	CONTACT TURCK FOR MORE INFORMATION		FILE: M4281612	SHEET 1 OF 1

B	UPDATE BARREL LENGTH	RDS	06/15/11	35386
REV	DESCRIPTION	BY	DATE	ECO NO.