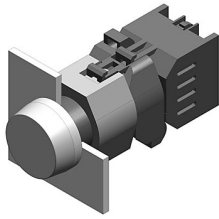


EAO – Your Expert Partner for Human Machine Interfaces

704.000.4 - Flasher actuator full face illumination

704.000.4 - Flasher actuator full face illumination



Attention: The preview is based on a sample product. This can differ from your current configuration.

Mounting

Mounting cut-out Ø 22.5 mm
Design raised

Front

Front shape round
Front dimension Ø 29 mm

Other Attributes

Weight 0.050 kg
Diffusor cap white translucent
Diffusor cap colour white
Diffusor cap optical effect translucent
Diffusor cap illumination illuminativ (LED and filament lamp)

Operating-/Indication part

Lens cap colour yellow
Lens cap optical effect transparent
Lens cap material Plastic

IP-Rating

Front protection IP 65

Connection Method

Terminal Screw

Actuator

Housing material Plastic
Housing colour grey

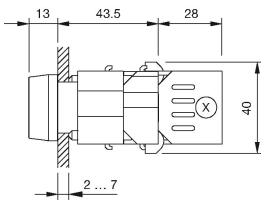
Function

Flasher

EAO – Your Expert Partner for Human Machine Interfaces

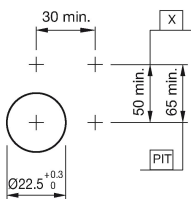
704.000.4 - Flasher actuator full face illumination

Dimensions



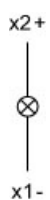
X = Screw terminal

Mounting cut-outs



PIT = Push-in terminal

Wiring diagram



Additional information

Filament lamp or LED