

## Main

|                                 |                          |
|---------------------------------|--------------------------|
| Range of product                | Harmony XB5              |
| Product or component type       | Complete pilot light     |
| Device short name               | XB5                      |
| Bezel material                  | Plastic                  |
| Fixing collar material          | Plastic                  |
| Mounting diameter               | 22 mm                    |
| Sale per indivisible quantity   | 1                        |
| Shape of signaling unit head    | Round                    |
| Cap/operator or lens colour     | Blue                     |
| Operator additional information | With plain lens          |
| Light source                    | Protected LED            |
| Bulb base                       | Integral LED             |
| Light source colour             | Blue                     |
| [Us] rated supply voltage       | 110...120 V AC, 50/60 Hz |
| [Us] rated supply voltage       | 110...120 V AC, 50/60 Hz |
| Device presentation             | Complete product         |

## Complementary

|  |  |
|--|--|
| Height                                 | 42 mm  |
| Width                                  | 30 mm  |
| Depth                                  | 54 mm  |
| Terminals description ISO n°1          | (X1-X2)PL  |
| Product weight                         | 0.038 kg   |
| Resistance to high pressure washer     | 7000000 Pa at 55 °C, distance: 0.1 m   |
| Connections - terminals                | Screw clamp terminals : $\leq 2 \times 1.5 \text{ mm}^2$ with cable end conforming to EN/IEC 60947-1 |
| [Ui] rated insulation voltage          | 250 V (degree of pollution: 3) conforming to EN 60947-1  |
| [Uimp] rated impulse withstand voltage | 4 kV conforming to EN 60947-1  |
| Signalling type                        | Steady   |
| Supply voltage limits                  | 100...132 V AC   |
| Current consumption                    | 14 mA  |
| Service life                           | 100000 h at rated voltage and 25 °C  |
| Surge withstand                        | 1 kV conforming to IEC 61000-4-5   |

## Environment

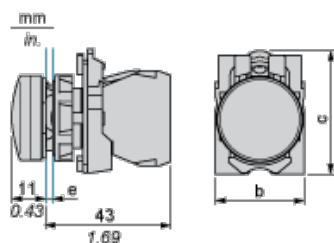
|                                       |  |
|---------------------------------------|--|
| protective treatment                  | TH   |
| ambient air temperature for storage   | -40...70 °C  |
| ambient air temperature for operation | -40...70 °C  |
| overvoltage category                  | Class II conforming to IEC 60536   |
| IP degree of protection               | IP67<br>IP66 conforming to IEC 60529   |
| NEMA degree of protection             | NEMA 13<br>NEMA 4X   |
| IK degree of protection               | IK05 conforming to IEC 50102   |
| standards                             | EN/IEC 60947-1<br>EN/IEC 60947-5-1<br>EN/IEC 60947-5-4<br>JIS C 4520<br>UL 508 |

|                                       |  |
|---------------------------------------|--|
| product certifications                | CSA<br>UL listed   |
| vibration resistance                  | 5 gn (f = 12...500 Hz) conforming to IEC 60068-2-6   |
| shock resistance                      | 50 gn (duration = 18 ms) for half sine wave acceleration conforming to IEC 60068-2-27<br>30 gn (duration = 11 ms) for half sine wave acceleration conforming to IEC 60068-2-27                       |
| resistance to fast transients         | 2 kV conforming to IEC 61000-4-4   |
| resistance to electromagnetic fields  | 10 V/m conforming to IEC 61000-4-3   |
| electromagnetic compatibility         | Electrostatic discharge 8 kV in free air (in insulating parts) IEC 61000-4-2<br>Electrostatic discharge 6 kV on contact (on metal parts) IEC 61000-4-2<br>Electromagnetic emission class B IEC 55011 |
| resistance to electrostatic discharge | 6 kV on contact (on metal parts) conforming to IEC 61000-4-2<br>8 kV in free air (in insulating parts) conforming to IEC 61000-4-2   |
| electromagnetic emission              | Class B conforming to IEC 55011  |

### Contractual warranty

|                 |           |
|-----------------|-----------|
| Warranty period | 18 months |
|-----------------|-----------|

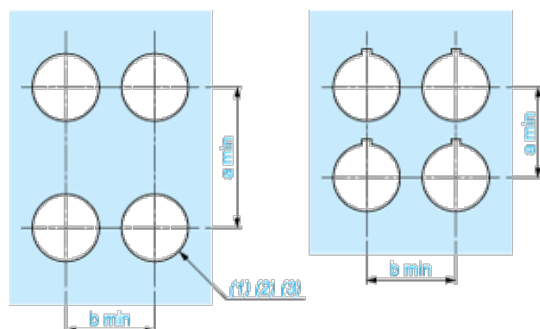
### Dimensions



- e: clamping thickness: 1 to 6 mm / 0.04 to 0.24 in.  
b: 30 mm / 1.18 in.  
c: 41.5 mm / 1.63 in.

### Panel Cut-out for Pushbuttons, Switches and Pilot Lights (Finished Holes, Ready for Installation)

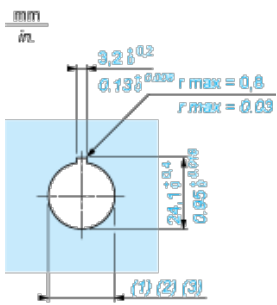
#### Connection by Screw Clamp Terminals or Plug-in Connectors or on Printed Circuit Board



- (1) Diameter on finished panel or support
- (2) For selector switches and Emergency stop buttons, use of an anti-rotation plate type ZB5AZ902 is recommended.
- (3) Ø22.5 mm recommended (Ø22.3<sub>0</sub><sup>+0.4</sup>) / Ø0.89 in. recommended (Ø0.88 in. <sub>0</sub><sup>+0.016</sup>)

| Connections                                   | a in mm | a in in. | b in mm | b in in. |
|---|---------|----------|---------|----------|
| By screw clamp terminals or plug-in connector | 40      | 1.57     | 30      | 1.18     |
| By Faston connectors                          | 45      | 1.77     | 32      | 1.26     |
| On printed circuit board                      | 30      | 1.18     | 30      | 1.18     |

#### Detail of Lug Recess



- (1) Diameter on finished panel or support
- (2) For selector switches and Emergency stop buttons, use of an anti-rotation plate type ZB5AZ902 is recommended.
- (3)  $\varnothing 22.5$  mm recommended ( $\varnothing 22.3 \text{ }_0^{+0.4}$ ) /  $\varnothing 0.89$  in. recommended ( $\varnothing 0.88 \text{ in. }_0^{+0.016}$ )