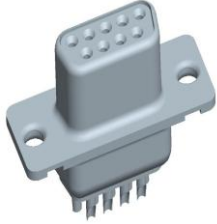


**DEP09S065TLF - D-Subminiature :  
Cable Connector 09 Way Socket  
Solder Bucket, without Accessory**



[www.fci.com](http://www.fci.com)

## Specifications

Approvals / Certifications	
Approvals / Certifications	Recognized (File E 118235)
Dimensional	
Size (Shell)	E
Size (Wire)	20 AWG max. on Signal
Electrical	
Current rating	7.5A per Contact
Resistance (Contact)	< 7.3 milli ohms
Voltage rating	1000V rms at 50 Hz
Voltage rating (DWV - Dielectric withstanding)	1000V rms
General	
Contact type	Signal
Gender	Socket
Number of contacts (Total)	9
Product Type	Connector
Termination Style	Solder Bucket
Mechanical	
Durability (Mating cycles)	High Perf (>500 Mating Cycles)
Extraction force (Signal)	0.3N min. per Contact
Insertion force (Signal)	5N max. per Contact
Mounting	
Mounting options	No Accessories
Other Features	

<b>Most Popular Configuration</b>	Yes
<b>Category Path</b>	/Product type/Cable Assemblies and Cable Connectors/Cable Connectors/D-Subminiature/D-Subminiature Cable Signal and Power /Product type/Input-Output Connectors/D-Subminiature/D-Sub Cable Connectors /Product type/Input-Output Connectors/D-Subminiature/D-Sub High Performance Product type/Input-Output Connectors/D-Subminiature/D-Sub High Performance Product type/Input-Output Connectors/D-Subminiature/D-Sub Cable Connectors Product type/Cable Assemblies and Cable Connectors/Cable Connectors/D-Subminiature/D-Subminiature Cable Signal and Power Product type/Cable Assemblies and IO cable connectors/IO cable connectors/D-Subminiature/D-Subminiature Cable Signal and Power
<b>Physical</b>	
<b>Plating (Contact)</b>	Gold over Nickel
<b>Plating (Shell)</b>	Matte Tin
<b>Plating (Solder tail)</b>	Sn
<b>Plating (Termination)</b>	Matte Tin over Nickel
<b>Temperature (Operating - range)</b>	-55°C to +125°C